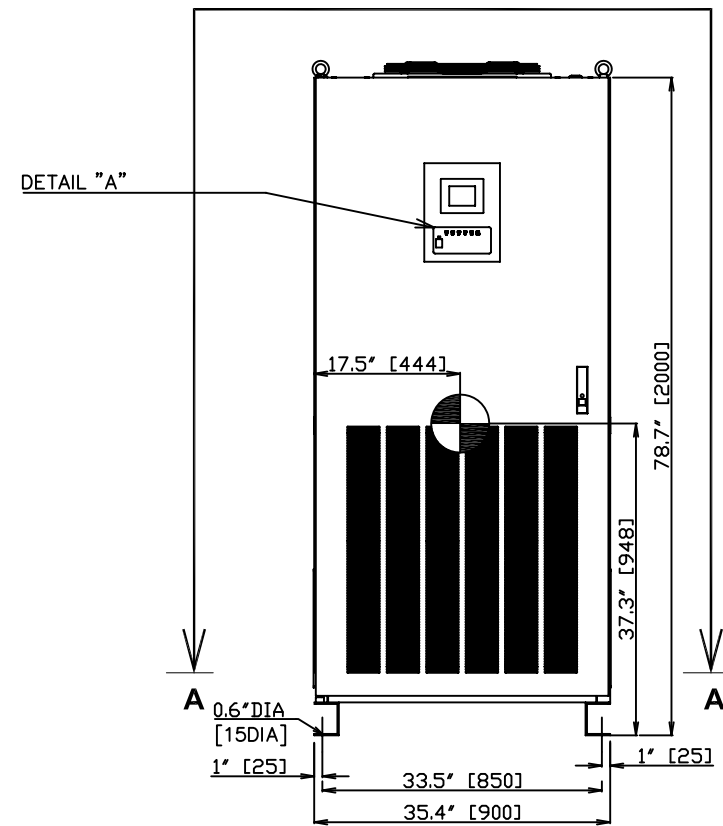


DETAIL "A"

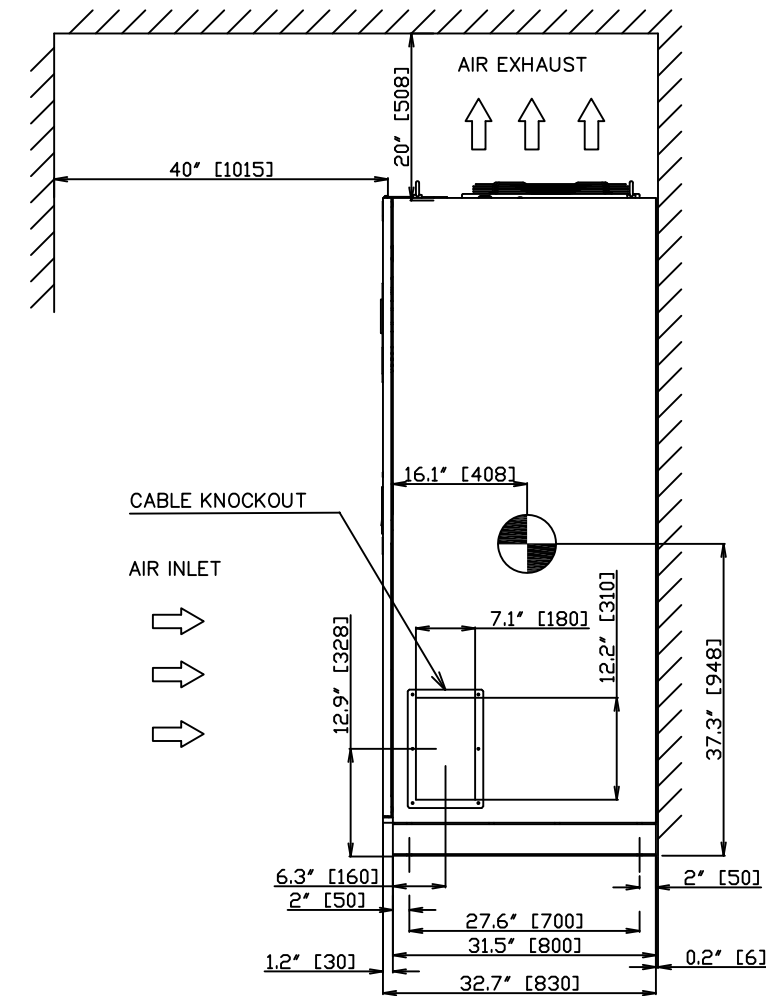
NOTES

1. DIMENSIONS ARE SHOWN IN INCHES (MILLIMETERS IN BRACKETS []).
2. SIDE CLEARANCE OF 1" [25] IS NOT REQUIRED WITH CABINETS INSTALLED SIDE-BY-SIDE.
3. CABINET SHOULD BE MAINTAINED UPRIGHT WITHIN ±15° DURING MOVING.

TYPE : T90S3S22KS6XSN  
 RATING : 225kVA-3P3W-480V-60Hz  
 APPROX. WEIGHT : 1,230LBS (558kg)  
 HEAT REJECTION : 25.1 kBTUs/hour



FRONT VIEW



SIDE VIEW

THIS MATERIAL IS THE EXCLUSIVE PROPERTY OF TOSHIBA INTERNATIONAL CORPORATION AND SHALL NOT BE REPRODUCED, USED OR DISCLOSED TO OTHERS UNLESS PRIOR WRITTEN AUTHORIZATION IS OBTAINED.

TITLE: G9000 225kVA UPS MODULE  
 OUTLINE & INSTALLATION DRAWING

SCALE: NTS  
 ORDER NO.

DRAWING NO. 922441COL0810JBT-MKTG

TOSHIBA INTERNATIONAL CORPORATION  
 13131 WEST LITTLE YORK ROAD, HOUSTON, TX, 77041 U.S.A.

FOR QUOTE Q0 JBT

DRAWN BY: JBT  
 DATE: 10/2/08

CHECKED BY: DATE

APPROVED BY: DATE