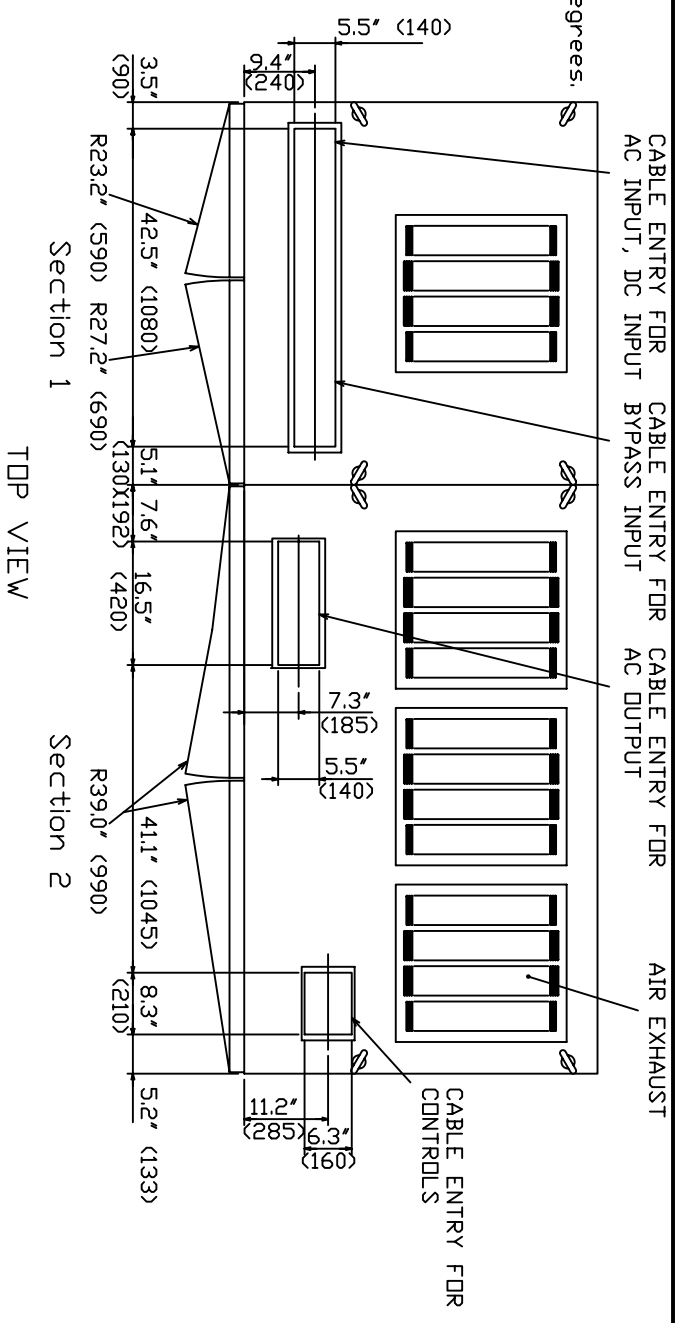
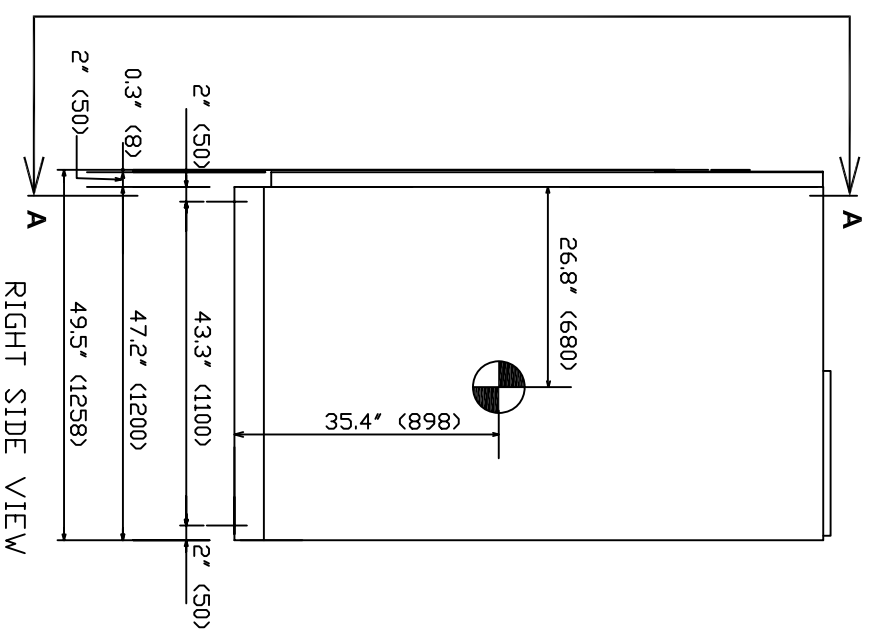
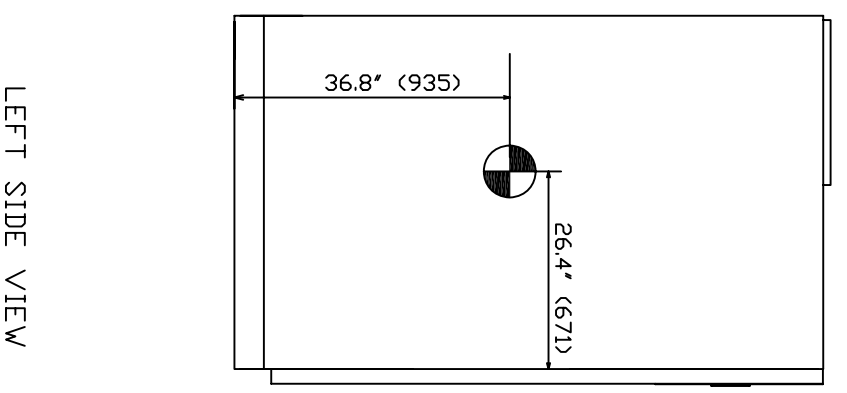
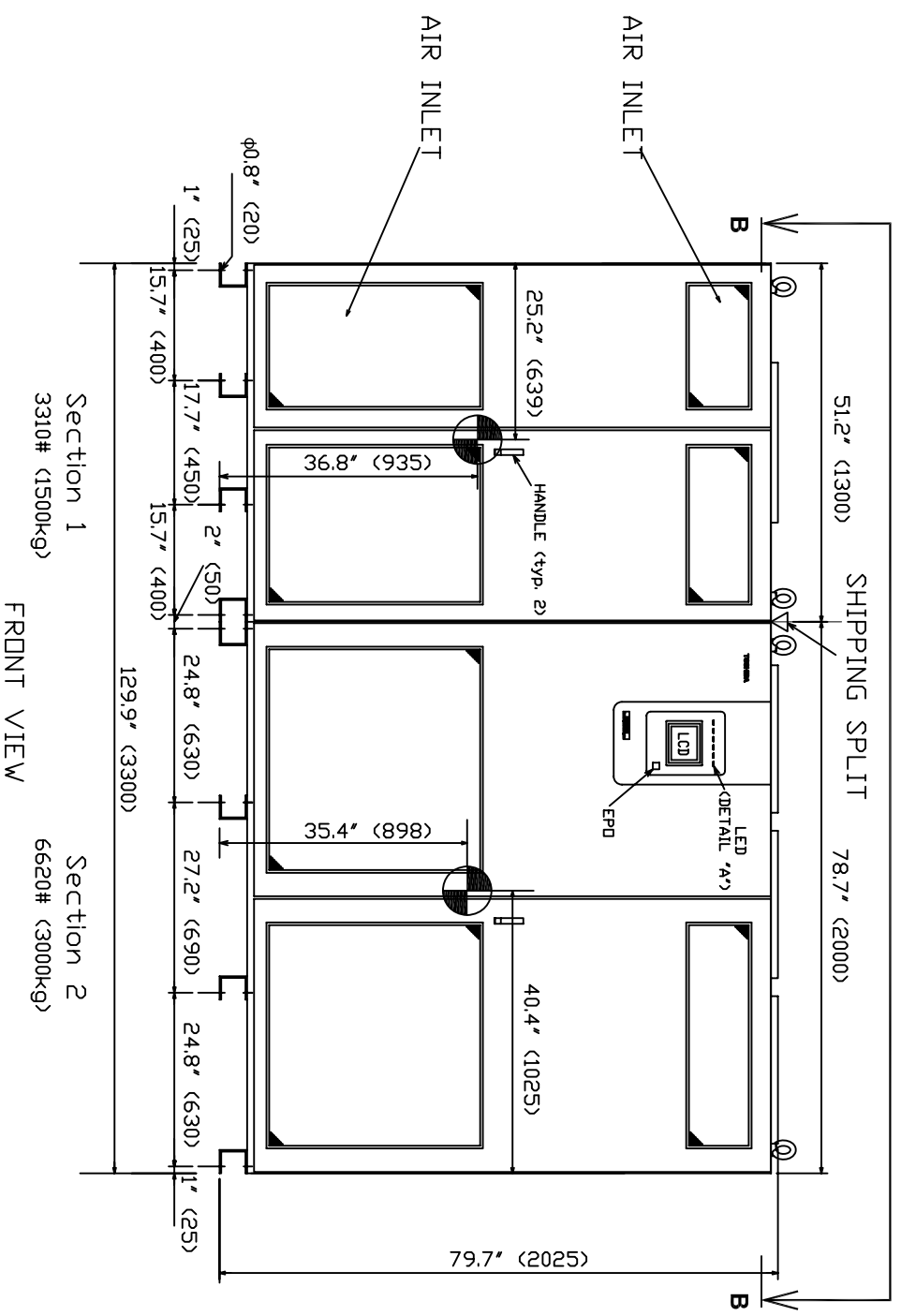


- NOTES
1. Cabinets must be maintained upright +/-10 degrees.
  2. Paint finish is color number 28Y7.7/D.3.
  3. Dimensions are inches (mm).



LOAD ON BATTERY LOAD ON INVERTER OR BYPASS OVERLOAD FAILURE (GREEN) (ORANGE) (ORANGE) (ORANGE) (RED) UPS LCD INVERTER OR BYPASS OVERLOAD FAILURE (GREEN) (ORANGE) (ORANGE) (ORANGE) (RED)

DETAIL "A"



LEFT SIDE VIEW

FRONT VIEW

RIGHT SIDE VIEW

INIT RELEASE	P0	JBT	JBT	DATE	8/27/07
		DRAWN BY	JBT	CHECKED BY	
				APPROVED BY	
				DATE	

THIS MATERIAL IS THE EXCLUSIVE PROPERTY OF TOSHIBA INTERNATIONAL CORPORATION AND SHALL NOT BE REPRODUCED, USED OR DISCLOSED TO OTHERS UNLESS PRIOR WRITTEN AUTHORIZATION IS OBTAINED.

TITLE: 8000MM UPS 750KVA OUTLINE & INSTALLATION DRAWING

TOSHIBA INTERNATIONAL CORPORATION  
13131 WEST LITTLE YORK ROAD, HOUSTON, TX, 77041 U.S.A.

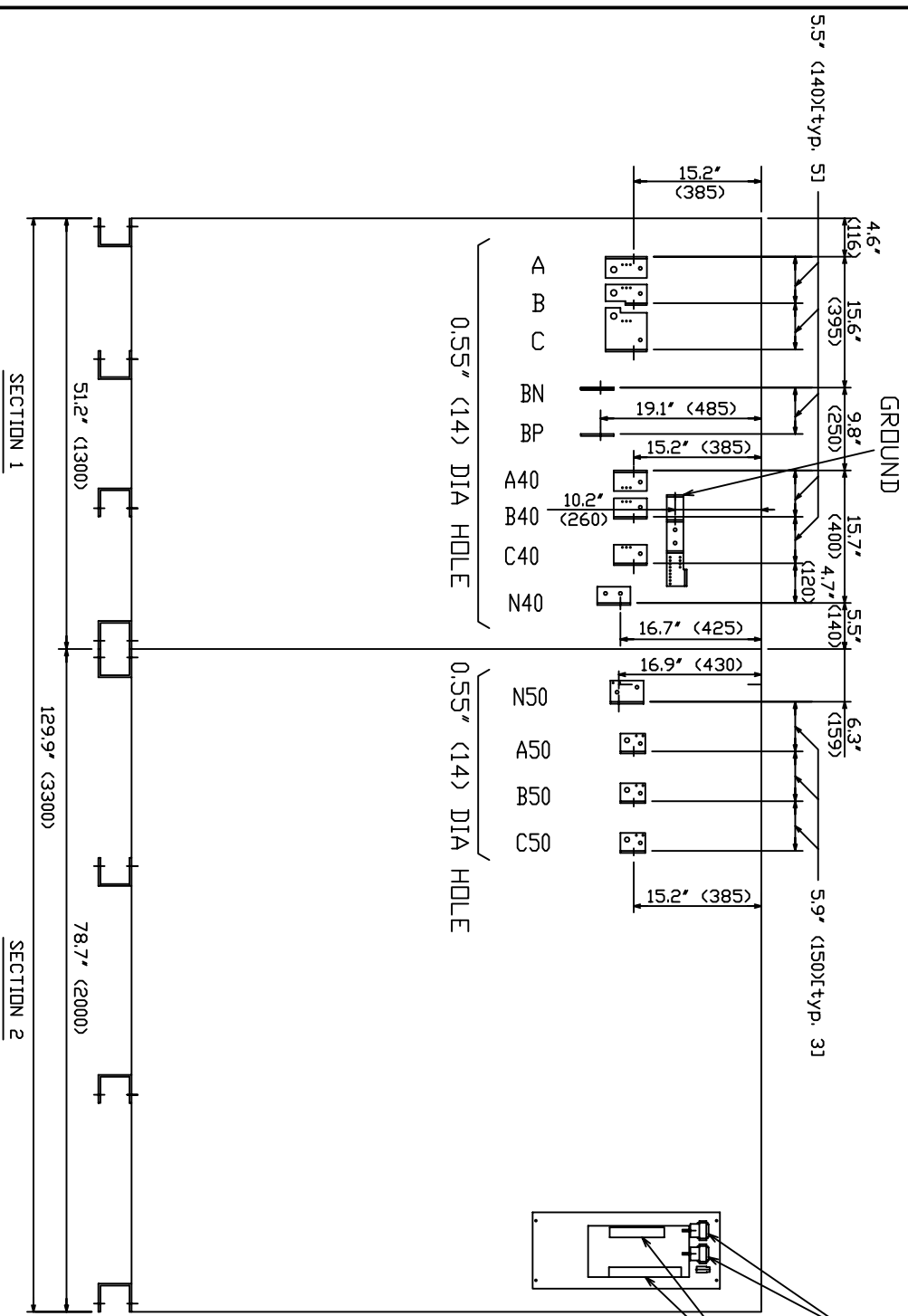
SCALE: NTS

ORDER NO.

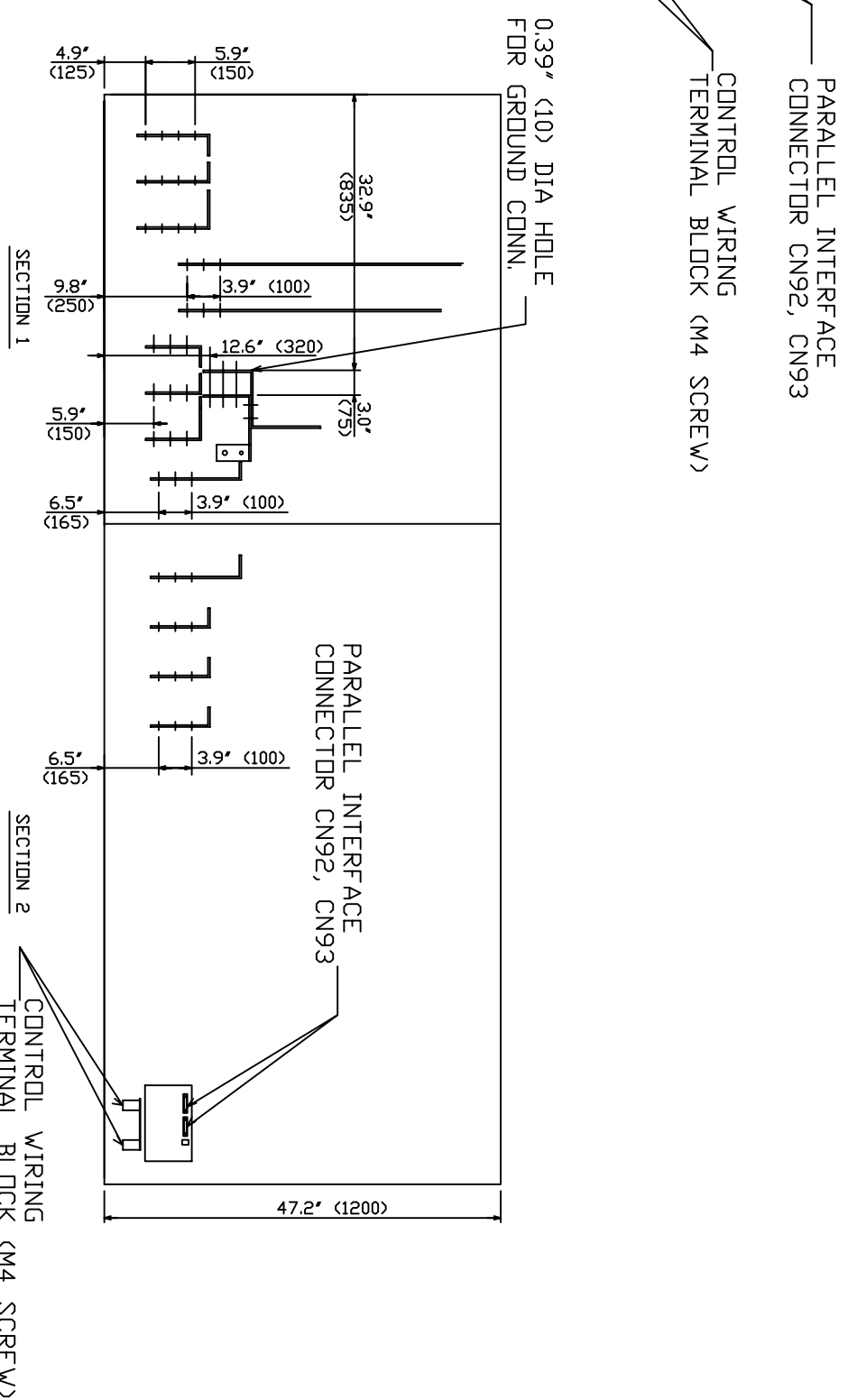
DRAWING NO. 7544DL12-MKTG

SH.1

OF 2



SECTION A-A



SECTION B-B

INIT RELEASE	P0	JBT	DRAWN BY: JBT	DATE 8/27/07
			CHECKED BY	DATE
			APPROVED BY	DATE

THIS MATERIAL IS THE EXCLUSIVE PROPERTY OF TOSHIBA INTERNATIONAL CORPORATION AND SHALL NOT BE REPRODUCED, USED OR DISCLOSED TO OTHERS UNLESS PRIOR WRITTEN AUTHORIZATION IS OBTAINED.

TITLE: G8000MM UPS 750KVA  
OUTLINE & INSTALLATION DRAWING

TOSHIBA INTERNATIONAL CORPORATION  
13131 WEST LITTLE YORK ROAD, HOUSTON, TX, 77041 U.S.A.

SCALE	ORDER NO.
NTS	
DRAWING NO.	
75440L22-MKTG	
SH. 2	OF 2