

CUST. NAME:

PROJECT NO.:

P.O. NUMBER:

DESCRIPTION: S11A004ECR3 ~ S11A150ECR3
 S112004ECR3 ~ S112150ECR3
 S114007ECR3 ~ S114150ECR3
 S116015ECR3 ~ S116150ECR3
 S11 CB, BYP, ACL 208/230/460V/600V 0.50~20HP

FINAL

PRELIMINARY

FOR APPROVAL

Note: Final Engineering and Manufacturing will proceed upon receipt of final approval

- NOT APPROVED AS NOTED - RESUBMIT DRAWINGS FOR APPROVAL. DO NOT PROCEED WITH FINAL ENGINEERING OR MANUFACTURING.
- APPROVED AS NOTED - PROCEED WITH FINAL ENGINEERING AND MANUFACTURING.
- APPROVED AS SUBMITTED - PROCEED WITH FINAL ENGINEERING AND MANUFACTURING.

APPROVAL BY:

Initial

Date

NO	DRAWING NO	REV	DRAWING DESCRIPTION
00	I608GZ00	1	DRAWING LIST
01	---	---	----
02	I308GZ02	1	THREE-LINE DIAGRAM
03	---	---	----
04	---	---	----
05	---	---	----
06	I808GZ06	0	INVERTER/BYPASS CIRCUIT
07	---	---	----
08	---	---	----
09	---	---	----
10	---	---	----
11	---	---	----
12	---	---	----
13	I808GZ13	0	S11 LOGIC INTERFACE
14	---	---	----
15	---	---	----

NO	DRAWING NO	REV	DRAWING DESCRIPTION
16	I808GZ16	1	RATING SHEET
17	---	---	----
18	I808GZ18	0	LEGEND
19	I108GZ19	1	OUTLINE DIAGRAM
20	---	---	----
21	---	---	----
22	I908GZ22	1	WIRING DIAGRAM <u>208/230V:</u> 0.50-10HP <u>460V:</u> 1-20HP <u>600V:</u> 2-20HP
23	---	---	----
24	I908GZ24	1	WIRING DIAGRAM <u>208/230V:</u> 15-20HP
25	---	---	----
26	---	---	----
27	---	---	----
28	---	---	----
29	---	---	----
30	---	---	----
31	---	---	----

4					
3					
2					
1	05/23/05	ADD 600V RATING	jedwards		
0	09/30/04	FIRST ISSUE	CMorales	CM	GBF
REV	DATE	DESCRIPTION	BY	CHK	APPR

TOSHIBA
 TOSHIBA INTERNATIONAL CORPORATION
 MADE IN HOUSTON, TEXAS U.S.A.

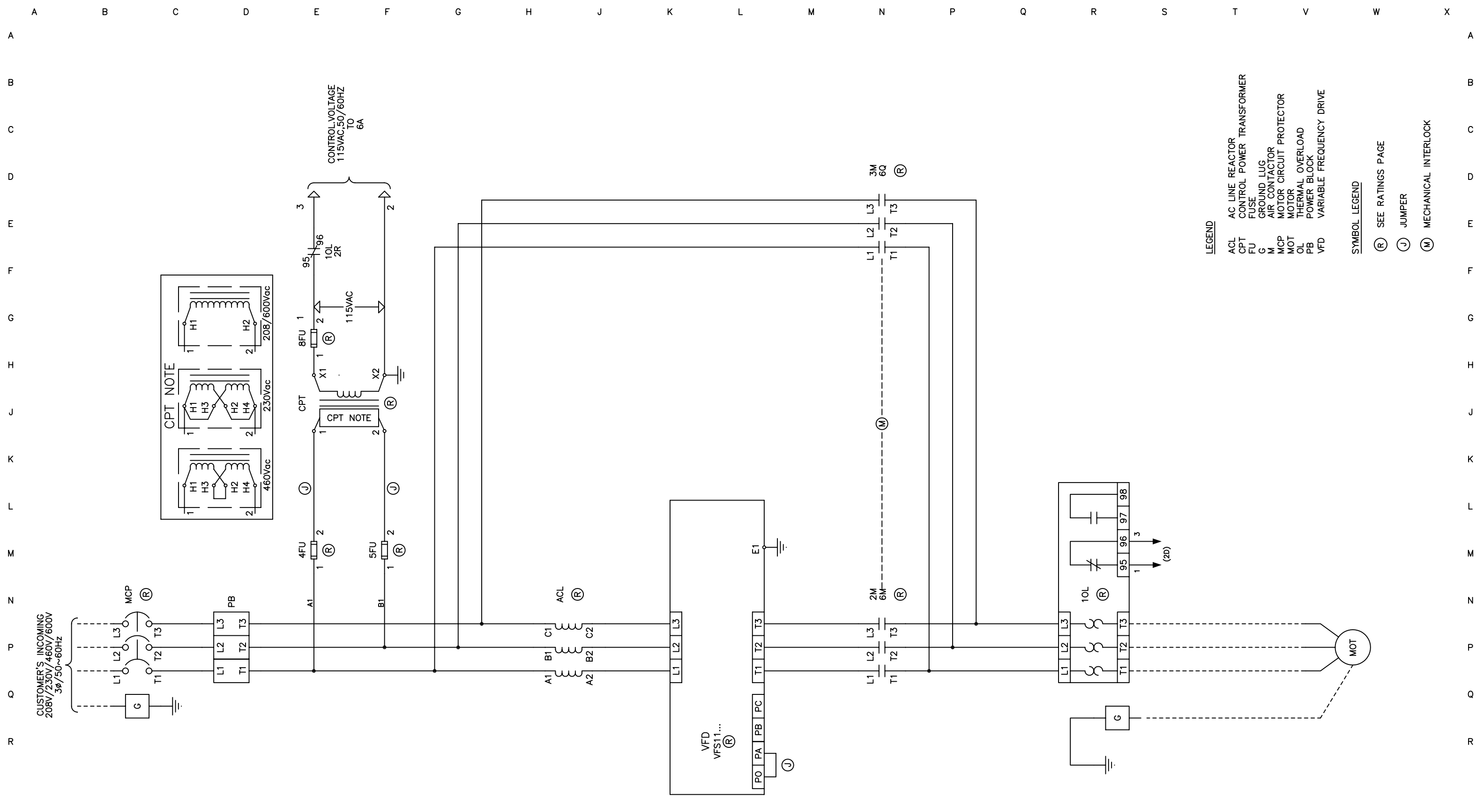
THIS MATERIAL IS THE EXCLUSIVE PROPERTY OF TOSHIBA INTERNATIONAL CORPORATION AND SHALL NOT BE REPRODUCED, USED, OR DISCLOSED TO OTHERS UNLESS PRIOR WRITTEN AUTHORIZATION IS OBTAINED.

TITLE: DRAWING LIST

CUSTOMER: _____ PROJECT NUMBER: _____

REVISION: 1 SCALE: 1.0=1.5

DRAWING NUMBER: 1608GZ00



4					
3					
2					
1	05/23/05	ADD 600V RATING	jedwards		
0	09/30/04	FIRST ISSUE	CMorales	CM	GBF
REV	DATE	DESCRIPTION	BY	CHK	APPR

TOSHIBA
TOSHIBA INTERNATIONAL CORPORATION
MADE IN HOUSTON, TEXAS U.S.A.

THIS MATERIAL IS THE EXCLUSIVE PROPERTY OF TOSHIBA INTERNATIONAL CORPORATION AND SHALL NOT BE REPRODUCED, USED, OR DISCLOSED TO OTHERS UNLESS PRIOR WRITTEN AUTHORIZATION IS OBTAINED.

TITLE:
THREE-LINE DIAGRAM

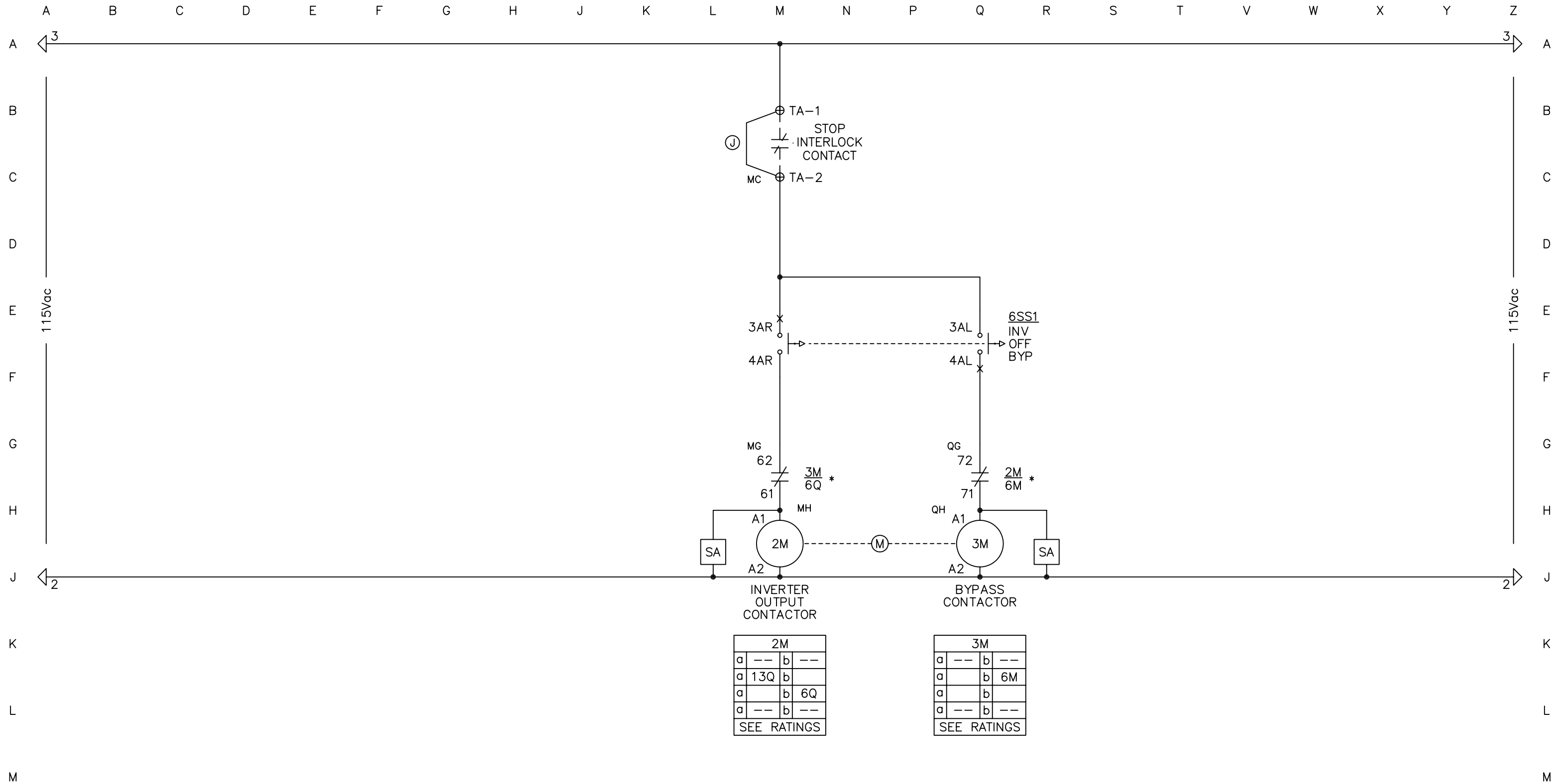
CUSTOMER:

PROJECT NUMBER:

REVISION: 1

SCALE: 1.0=2.0

DRAWING NUMBER:
1308GZ02



2M	
a	---
a	13Q
a	b
a	6Q
a	---
SEE RATINGS	

3M	
a	---
a	b
a	6M
a	b
a	---
SEE RATINGS	

*NOTE: WHEN USING LC1D09-LC1D32 CONTACTORS,
 JUMPER KITS ARE INSTALLED CHANGING
 3M-62 AND 3M-61 TO 3M-22 AND 3M-21,
 AND 2M-72 AND 2M-71 TO 2M-22 AND 2M-21

4					
3					
2					
1					
0	09/30/04	FIRST ISSUE	CMorales		
REV	DATE	DESCRIPTION	BY	CHK	APPR

TOSHIBA
 TOSHIBA INTERNATIONAL CORPORATION
 MADE IN HOUSTON, TEXAS U.S.A.
 THIS MATERIAL IS THE EXCLUSIVE PROPERTY OF
 TOSHIBA INTERNATIONAL CORPORATION AND SHALL
 NOT BE REPRODUCED, USED, OR DISCLOSED TO OTHERS
 UNLESS PRIOR WRITTEN AUTHORIZATION IS OBTAINED.

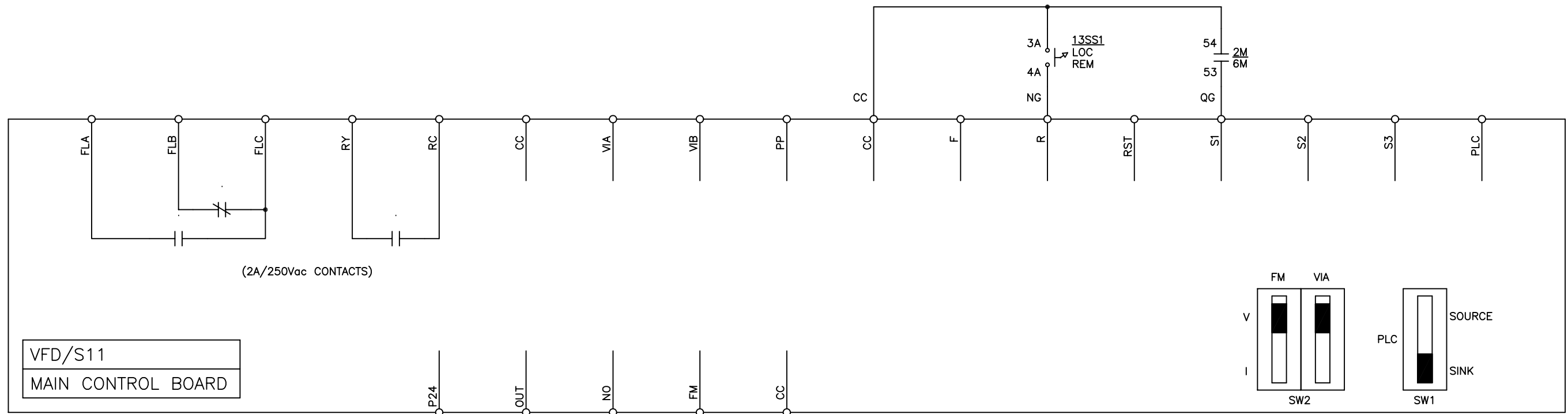
TITLE:
 INVERTER/BYPASS CIRCUIT
 CUSTOMER:
 PROJECT NUMBER:

REVISION:
 0
 SCALE:
 1.0=1.5
 DRAWING NUMBER:
 1808GZ06

A B C D E F G H J K L M N P Q R S T V W

A
B
C
D
E
F
G
H
J
K
L
M
N
P
Q
R

A
B
C
D
E
F
G
H
J
K
L
M
N
P
Q
R



NOTE: SEE S11 INVERTER MANUAL FOR TERMINAL FUNCTIONS.

4					
3					
2					
1					
0	09/30/04	FIRST ISSUE	CMorales		
REV	DATE	DESCRIPTION	BY	CHK	APPR

TOSHIBA
TOSHIBA INTERNATIONAL CORPORATION
MADE IN HOUSTON, TEXAS U.S.A.

THIS MATERIAL IS THE EXCLUSIVE PROPERTY OF TOSHIBA INTERNATIONAL CORPORATION AND SHALL NOT BE REPRODUCED, USED, OR DISCLOSED TO OTHERS UNLESS PRIOR WRITTEN AUTHORIZATION IS OBTAINED.

TITLE: S11 LOGIC INTERFACE CIRCUIT

CUSTOMER: _____ PROJECT NUMBER: _____

REVISION: 0 SCALE: 1.0=2.0

DRAWING NUMBER: 1808GZ13

VOLTAGE	HP	VFD	OL (A)	MCP (A)	2M,3M	CPT (VA)	4,5FU	8FU	ACL
208V	1/2	VFS11-2004	1.6~2.5	7	LC1D09	100	2.0A/600V	1.0A/250V	4A,240V
	1	VFS11-2007	4~6	7	LC1D09	100	2.0A/600V	1.0A/250V	6A,240V
	2	VFS11-2015	5.5~8	15	LC1D09	100	2.0A/600V	1.0A/250V	8A,240V
	3	VFS11-2022	9~13	15	LC1D12	100	2.0A/600V	1.0A/250V	12A,240V
	5	VFS11-2037	12~18	30	LC1D18	100	2.0A/600V	1.0A/250V	21A,240V
	7.5	VFS11-2055	17~25	50	LC1D25	100	2.0A/600V	1.0A/250V	25A,240V
	10	VFS11-2075	25~32	50	LC1D32	100	2.0A/600V	1.0A/250V	35A,240V
	15	VFS11-2110	37~50	75	LC1D50	150	3.0A/600V	1.4A/250V	55A,240V
	20	VFS11-2150	55~70	75	LC1D65	150	3.0A/600V	1.4A/250V	80A,240V

VOLTAGE	HP	VFD	OL (A)	MCP (A)	2M,3M	CPT (VA)	4,5FU	8FU	ACL
230V	1/2	VFS11-2004	1.6~2.5	7	LC1D09	100	1.8A/600V	1.0A/250V	4A,240V
	1	VFS11-2007	4~6	7	LC1D09	100	1.8A/600V	1.0A/250V	6A,240V
	2	VFS11-2015	5.5~8	15	LC1D09	100	1.8A/600V	1.0A/250V	8A,240V
	3	VFS11-2022	7~10	15	LC1D12	100	1.8A/600V	1.0A/250V	12A,240V
	5	VFS11-2037	12~18	30	LC1D18	100	1.8A/600V	1.0A/250V	16A,240V
	7.5	VFS11-2055	17~25	30	LC1D25	100	1.8A/600V	1.0A/250V	25A,240V
	10	VFS11-2075	25~32	50	LC1D32	100	1.8A/600V	1.0A/250V	35A,240V
	15	VFS11-2110	37~50	75	LC1D50	150	2.5A/600V	1.4A/250V	45A,240V
	20	VFS11-2150	48~65	75	LC1D65	150	2.5A/600V	1.4A/250V	55A,240V

VOLTAGE	HP	VFD	OL (A)	MCP (A)	2M,3M	CPT (VA)	4,5FU	8FU	ACL
460V	1	VFS11-4007	1.6~2.5	3	LC1D09	100	1A/600V	1A/250V	3A,480V
	2	VFS11-4015	2.5~4	7	LC1D09	100	1A/600V	1A/250V	4A,480V
	3	VFS11-4022	4~6	7	LC1D09	100	1A/600V	1A/250V	6A,480V
	5	VFS11-4037	5.5~8	15	LC1D09	100	1A/600V	1A/250V	8A,480V
	7.5	VFS11-4055	9~13	15	LC1D12	100	1A/600V	1A/250V	12A,480V
	10	VFS11-4075	12~18	30	LC1D18	100	1A/600V	1A/250V	16A,480V
	15	VFS11-4110	17~25	30	LC1D25	100	1A/600V	1A/250V	25A,480V
	20	VFS11-4150	23~28	50	LC1D32	100	1A/600V	1A/250V	35A,480V

VOLTAGE	HP	VFD	OL (A)	MCP (A)	2M,3M	CPT (VA)	4,5FU	8FU	ACL
600V	2	VFS11-6015	2.5~4	15	LC1D09	100	1A/600V	1A/250V	3A,600V
	3	VFS11-6022	2.5~4	15	LC1D09	100	1A/600V	1A/250V	4A,600V
	5	VFS11-6037	5.5~8	15	LC1D09	100	1A/600V	1A/250V	8A,600V
	7.5	VFS11-6055	7~10	15	LC1D09	100	1A/600V	1A/250V	12A,600V
	10	VFS11-6075	9~13	15	LC1D12	100	1A/600V	1A/250V	16A,600V
	15	VFS11-6110	12~18	30	LC1D18	100	1A/600V	1A/250V	21A,600V
	20	VFS11-6150	17~25	30	LC1D25	100	1A/600V	1A/250V	25A,600V

4					
3					
2					
1	05/23/05	ADD 600V RATING	jedwards		
0	09/30/04	FIRST ISSUE	CMorales	CM	GBF
REV	DATE	DESCRIPTION	BY	CHK	APPR

TOSHIBA
TOSHIBA INTERNATIONAL CORPORATION
MADE IN HOUSTON, TEXAS U.S.A.

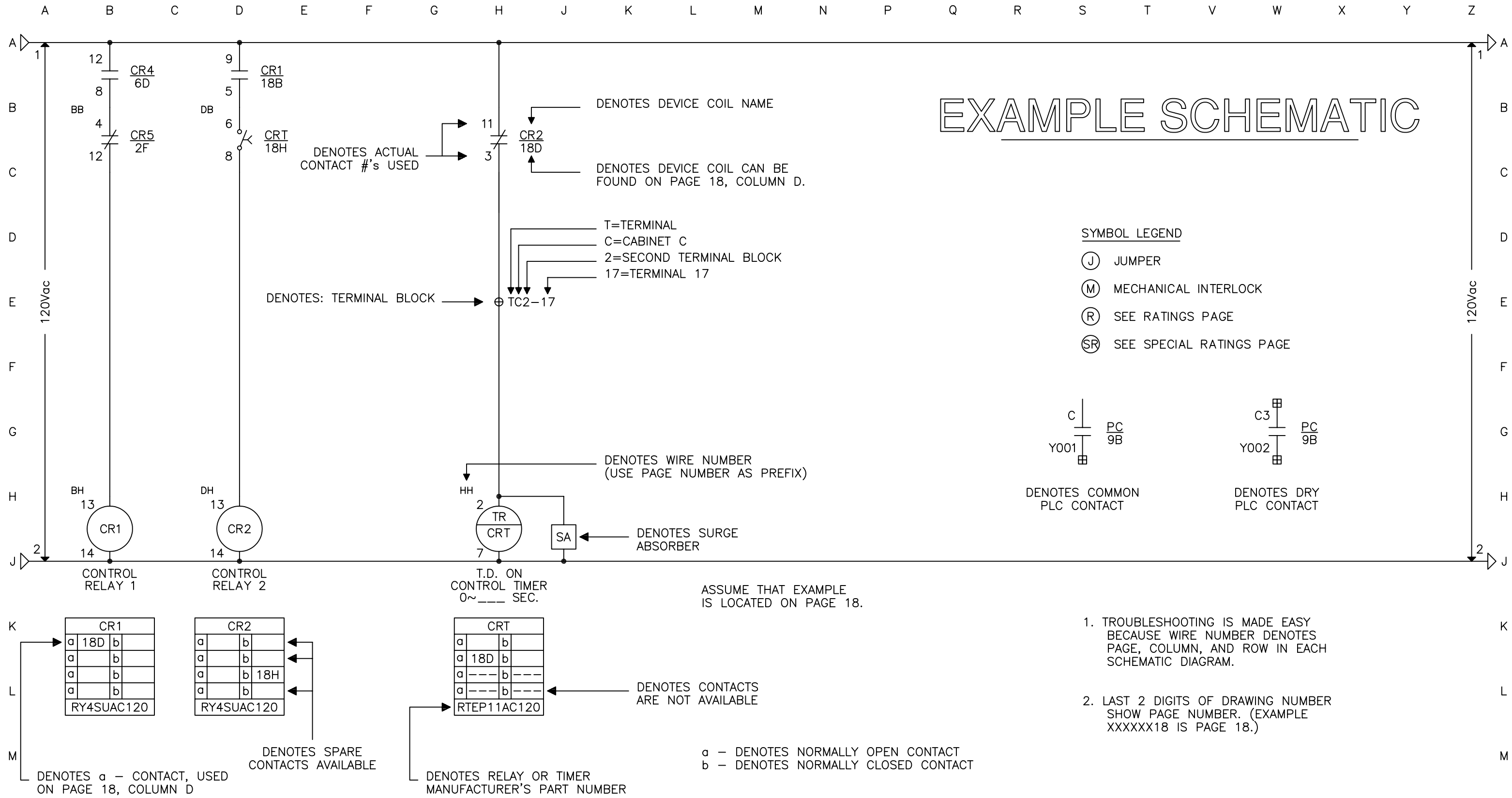
THIS MATERIAL IS THE EXCLUSIVE PROPERTY OF TOSHIBA INTERNATIONAL CORPORATION AND SHALL NOT BE REPRODUCED, USED, OR DISCLOSED TO OTHERS UNLESS PRIOR WRITTEN AUTHORIZATION IS OBTAINED.

TITLE: RATING SHEET

CUSTOMER: _____ PROJECT NUMBER: _____

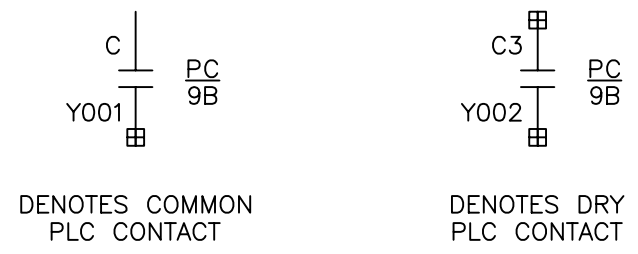
REVISION: 1 SCALE: 1.0=1.5

DRAWING NUMBER: 1808GZ16



EXAMPLE SCHEMATIC

- SYMBOL LEGEND**
- (J) JUMPER
 - (M) MECHANICAL INTERLOCK
 - (R) SEE RATINGS PAGE
 - (SR) SEE SPECIAL RATINGS PAGE



1. TROUBLESHOOTING IS MADE EASY BECAUSE WIRE NUMBER DENOTES PAGE, COLUMN, AND ROW IN EACH SCHEMATIC DIAGRAM.
2. LAST 2 DIGITS OF DRAWING NUMBER SHOW PAGE NUMBER. (EXAMPLE XXXXX18 IS PAGE 18.)

a - DENOTES NORMALLY OPEN CONTACT
 b - DENOTES NORMALLY CLOSED CONTACT

4					
3					
2					
1					
0	09/30/04	FIRST ISSUE	CMorales		
REV	DATE	DESCRIPTION	BY	CHK	APPR

TOSHIBA
TOSHIBA INTERNATIONAL CORPORATION
 MADE IN HOUSTON, TEXAS U.S.A.

THIS MATERIAL IS THE EXCLUSIVE PROPERTY OF TOSHIBA INTERNATIONAL CORPORATION AND SHALL NOT BE REPRODUCED, USED, OR DISCLOSED TO OTHERS UNLESS PRIOR WRITTEN AUTHORIZATION IS OBTAINED.

TITLE: LEGEND

CUSTOMER: _____ PROJECT NUMBER: _____

REVISION: 0 SCALE: 1.0=1.5

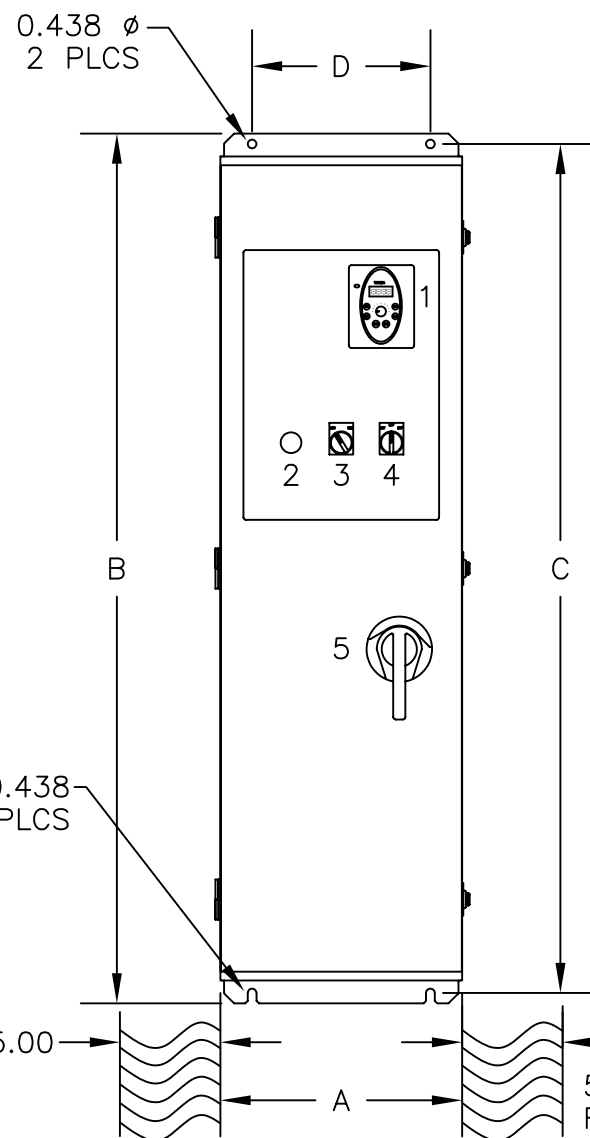
DRAWING NUMBER: 1808GZ18

DEVICE LEGEND

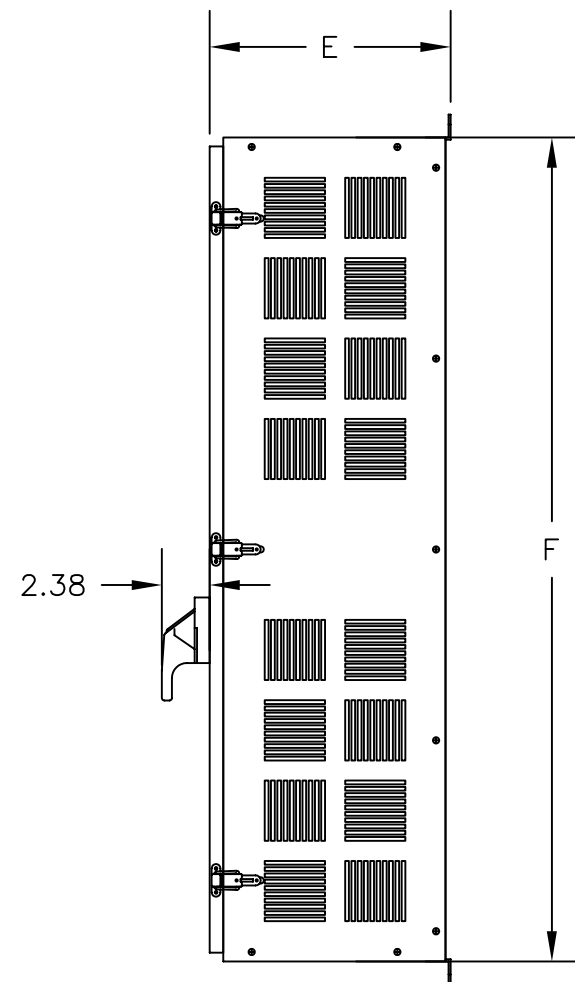
1. S11 OPERATOR KEYPAD
2. HOLE PLUG
3. "LOC/REM" SWITCH
4. "INVERTER/OFF/BYPASS" SELECTOR SWITCH
5. CIRCUIT DISCONNECT



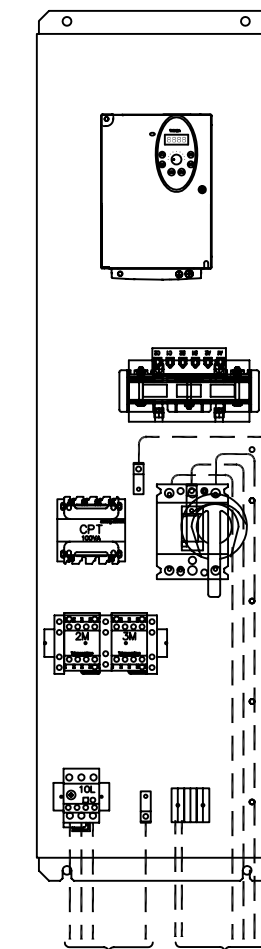
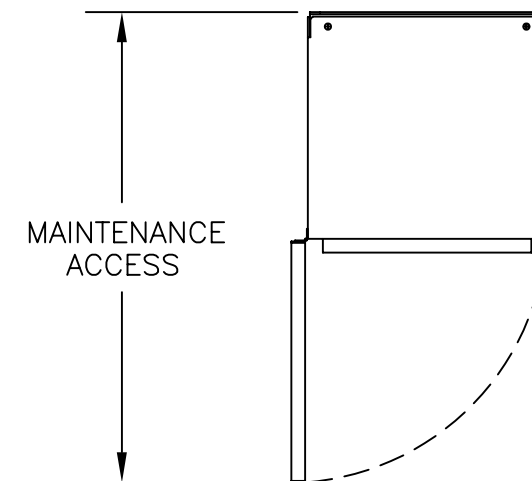
S11 KEYPAD DETAIL



FRONT VIEW



RIGHT SIDE VIEW



HP RATING	208/230V						APPROX. WT. lbs.	MAINT. ACCESS
	A	B	C	D	E	F		
1/2	12.00	43.29	42.25	8.88	11.99	41.00	75	23.50
1	12.00	43.29	42.25	8.88	11.99	41.00	75	23.50
2	12.00	43.29	42.25	8.88	11.99	41.00	75	23.50
3	12.00	43.29	42.25	8.88	11.99	41.00	80	23.50
5	12.00	43.29	42.25	8.88	11.99	41.00	80	23.50
7.5	12.00	43.29	42.25	8.88	11.99	41.00	90	23.50
10	12.00	43.29	42.25	8.88	11.99	41.00	90	23.50
15	18.00	48.29	47.25	11.88	16.00	46.12	150	33.31
20	18.00	48.29	47.25	11.88	16.00	46.12	150	33.31

HP RATING	460V/600V						APPROX. WT. lbs.	MAINT. ACCESS
	A	B	C	D	E	F		
1	12.00	43.29	42.25	8.88	11.99	41.00	75	23.50
2	12.00	43.29	42.25	8.88	11.99	41.00	75	23.50
3	12.00	43.29	42.25	8.88	11.99	41.00	80	23.50
5	12.00	43.29	42.25	8.88	11.99	41.00	80	23.50
7.5	12.00	43.29	42.25	8.88	11.99	41.00	90	23.50
10	12.00	43.29	42.25	8.88	11.99	41.00	90	23.50
15	18.00	48.29	47.25	11.88	16.00	46.12	160	33.31
20	18.00	48.29	47.25	11.88	16.00	46.12	160	33.31

REV	DATE	DESCRIPTION	BY	CHK	APPR
4					
3					
2					
1	05/23/05	ADD 600V RATING	jedwards		
0	09/30/04	FIRST ISSUE	CMorales	CM	GBF

TOSHIBA
TOSHIBA INTERNATIONAL CORPORATION
MADE IN HOUSTON, TEXAS U.S.A.

THIS MATERIAL IS THE EXCLUSIVE PROPERTY OF TOSHIBA INTERNATIONAL CORPORATION AND SHALL NOT BE REPRODUCED, USED, OR DISCLOSED TO OTHERS UNLESS PRIOR WRITTEN AUTHORIZATION IS OBTAINED.

TITLE: OUTLINE DIAGRAM		REVISION: 1	SCALE: 1.0=10.0
CUSTOMER:	PROJECT NUMBER:	DRAWING NUMBER: 1108GZ19	

