

CUST. NAME:

PROJECT NO.:

P.O. NUMBER:

DESCRIPTION: S11A004EC ~ S11A150EC
 S112004EC ~ S112150EC
 S114007EC ~ S114150EC
 S116015EC ~ S116150EC
 S11 CB 208/230/460V/600V 0.50~20HP

FINAL

PRELIMINARY

FOR APPROVAL

Note: Final Engineering and Manufacturing will proceed upon receipt of final approval

- NOT APPROVED AS NOTED - RESUBMIT DRAWINGS FOR APPROVAL. DO NOT PROCEED WITH FINAL ENGINEERING OR MANUFACTURING.
- APPROVED AS NOTED - PROCEED WITH FINAL ENGINEERING AND MANUFACTURING.
- APPROVED AS SUBMITTED - PROCEED WITH FINAL ENGINEERING AND MANUFACTURING.

APPROVAL BY:

Initial

Date

| NO | DRAWING NO | REV | DRAWING DESCRIPTION |
|----|------------|-----|-------------------------|
| 00 | I608GY00 | 1 | DRAWING LIST |
| 01 | ---- | --- | ----- |
| 02 | I308GY02 | 1 | THREE-LINE DIAGRAM |
| 03 | ---- | --- | ----- |
| 04 | ---- | --- | ----- |
| 05 | ---- | --- | ----- |
| 06 | I808GY06 | 0 | INVERTER/BYPASS CIRCUIT |
| 07 | ---- | --- | ----- |
| 08 | ---- | --- | ----- |
| 09 | ---- | --- | ----- |
| 10 | ---- | --- | ----- |
| 11 | ---- | --- | ----- |
| 12 | ---- | --- | ----- |
| 13 | I808GY13 | 0 | S11 LOGIC INTERFACE |
| 14 | ---- | --- | ----- |
| 15 | ---- | --- | ----- |

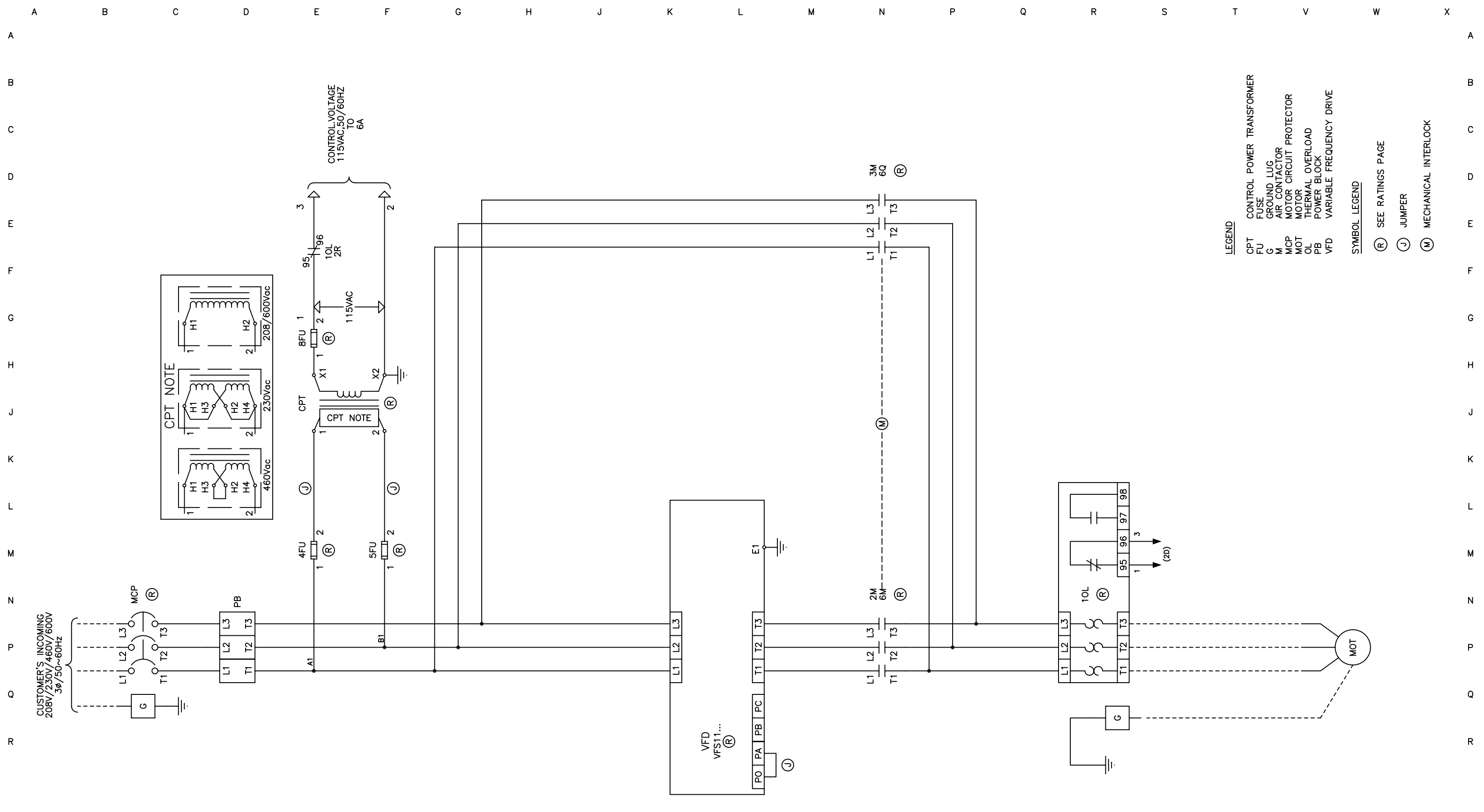
| NO | DRAWING NO | REV | DRAWING DESCRIPTION |
|----|------------|-----|---|
| 16 | I808GY16 | 1 | RATING SHEET |
| 17 | ---- | --- | ----- |
| 18 | I808GY18 | 0 | LEGEND |
| 19 | I108GY19 | 1 | OUTLINE DIAGRAM |
| 20 | ---- | --- | ----- |
| 21 | ---- | --- | ----- |
| 22 | I908GY22 | 1 | WIRING DIAGRAM <u>208/230V</u> : 0.50-10HP <u>460V</u> : 1-20HP <u>600V</u> : 2-20HP |
| 23 | ---- | --- | ----- |
| 24 | I908GY24 | 1 | WIRING DIAGRAM <u>208/230V</u> : 15-20HP |
| 25 | ---- | --- | ----- |
| 26 | ---- | --- | ----- |
| 27 | ---- | --- | ----- |
| 28 | ---- | --- | ----- |
| 29 | ---- | --- | ----- |
| 30 | ---- | --- | ----- |
| 31 | ---- | --- | ----- |

| REV | DATE | DESCRIPTION | BY | CHK | APPR |
|-----|----------|-----------------|----------|-----|------|
| 4 | | | | | |
| 3 | | | | | |
| 2 | | | | | |
| 1 | 05/24/05 | ADD 600V RATING | jedwards | | |
| 0 | 09/30/04 | FIRST ISSUE | CMorales | CM | GBF |

TOSHIBA
 TOSHIBA INTERNATIONAL CORPORATION
 MADE IN HOUSTON, TEXAS U.S.A.

THIS MATERIAL IS THE EXCLUSIVE PROPERTY OF TOSHIBA INTERNATIONAL CORPORATION AND SHALL NOT BE REPRODUCED, USED, OR DISCLOSED TO OTHERS UNLESS PRIOR WRITTEN AUTHORIZATION IS OBTAINED.

| | | | |
|------------------------|-----------------|-----------------------------|-------------------|
| TITLE: DRAWING LIST | | REVISION: 1 | SCALE: 1.0=1.5 |
| CUSTOMER: | PROJECT NUMBER: | DRAWING NUMBER: I608GY00 | |



- LEGEND**
- CPT CONTROL POWER TRANSFORMER
 - FU FUSE
 - G GROUND LUG
 - M AIR CONTACTOR
 - MCP MOTOR CIRCUIT PROTECTOR
 - MOT MOTOR
 - OL THERMAL OVERLOAD
 - PB POWER BLOCK
 - VFD VARIABLE FREQUENCY DRIVE
- SYMBOL LEGEND**
- (R) SEE RATINGS PAGE
 - (J) JUMPER
 - (M) MECHANICAL INTERLOCK

| | | | | | |
|-----|----------|-----------------|----------|-----|------|
| 4 | | | | | |
| 3 | | | | | |
| 2 | | | | | |
| 1 | 05/24/05 | ADD 600V RATING | jedwards | | |
| 0 | 09/30/04 | FIRST ISSUE | CMorales | CM | GBF |
| REV | DATE | DESCRIPTION | BY | CHK | APPR |

TOSHIBA
TOSHIBA INTERNATIONAL CORPORATION
 MADE IN HOUSTON, TEXAS U.S.A.

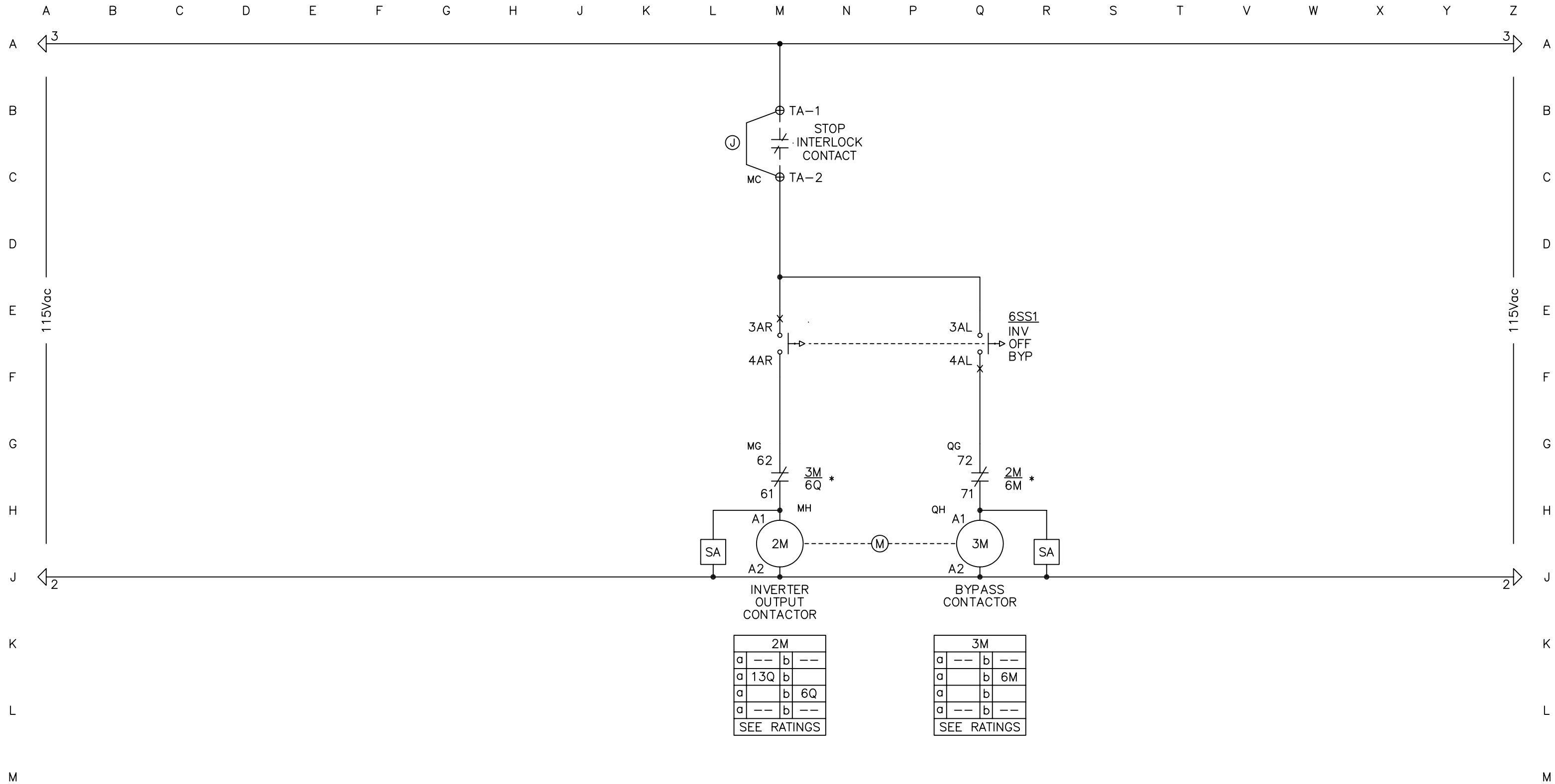
THIS MATERIAL IS THE EXCLUSIVE PROPERTY OF TOSHIBA INTERNATIONAL CORPORATION AND SHALL NOT BE REPRODUCED, USED, OR DISCLOSED TO OTHERS UNLESS PRIOR WRITTEN AUTHORIZATION IS OBTAINED.

TITLE: THREE-LINE DIAGRAM

CUSTOMER: _____ PROJECT NUMBER: _____

REVISION: 1 SCALE: 1.0=2.0

DRAWING NUMBER: 1308GY02



| 2M | |
|-------------|-----|
| a | --- |
| a | 13Q |
| a | b |
| a | 6Q |
| a | --- |
| SEE RATINGS | |

| 3M | |
|-------------|-----|
| a | --- |
| a | b |
| a | 6M |
| a | b |
| a | --- |
| SEE RATINGS | |

*NOTE: WHEN USING LC1D09-LC1D32 CONTACTORS, JUMPER KITS ARE INSTALLED CHANGING 3M-62 AND 3M-61 TO 3M-22 AND 3M-21, AND 2M-72 AND 2M-71 TO 2M-22 AND 2M-21

| 4 | | | | | |
|-----|----------|-------------|----------|-----|------|
| 3 | | | | | |
| 2 | | | | | |
| 1 | | | | | |
| 0 | 09/30/04 | FIRST ISSUE | CMorales | | |
| REV | DATE | DESCRIPTION | BY | CHK | APPR |

TOSHIBA
TOSHIBA INTERNATIONAL CORPORATION
 MADE IN HOUSTON, TEXAS U.S.A.
 THIS MATERIAL IS THE EXCLUSIVE PROPERTY OF TOSHIBA INTERNATIONAL CORPORATION AND SHALL NOT BE REPRODUCED, USED, OR DISCLOSED TO OTHERS UNLESS PRIOR WRITTEN AUTHORIZATION IS OBTAINED.

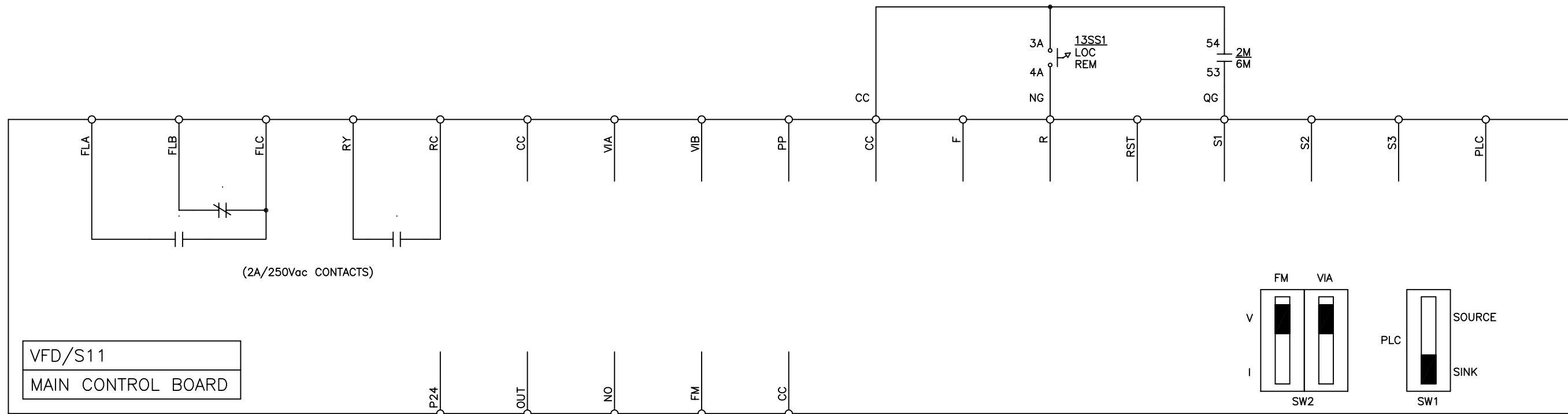
TITLE: INVERTER/BYPASS CIRCUIT
 CUSTOMER:
 PROJECT NUMBER:

REVISION: 0
 SCALE: 1.0=1.5
 DRAWING NUMBER: 1808GY06

A B C D E F G H J K L M N P Q R S T V W

A
B
C
D
E
F
G
H
J
K
L
M
N
P
Q
R

A
B
C
D
E
F
G
H
J
K
L
M
N
P
Q
R



NOTE: SEE S11 INVERTER MANUAL FOR TERMINAL FUNCTIONS.

| 4 | | | | | |
|-----|----------|-------------|----------|-----|------|
| 3 | | | | | |
| 2 | | | | | |
| 1 | | | | | |
| 0 | 09/30/04 | FIRST ISSUE | CMorales | | |
| REV | DATE | DESCRIPTION | BY | CHK | APPR |

TOSHIBA
TOSHIBA INTERNATIONAL CORPORATION
 MADE IN HOUSTON, TEXAS U.S.A.

THIS MATERIAL IS THE EXCLUSIVE PROPERTY OF TOSHIBA INTERNATIONAL CORPORATION AND SHALL NOT BE REPRODUCED, USED, OR DISCLOSED TO OTHERS UNLESS PRIOR WRITTEN AUTHORIZATION IS OBTAINED.

TITLE: S11 LOGIC INTERFACE CIRCUIT

CUSTOMER: PROJECT NUMBER:

REVISION: 0 SCALE: 1.0=2.0

DRAWING NUMBER: 1808GY13

| VOLTAGE | HP | VFD | OL (A) | MCP (A) | 2M,3M | CPT (VA) | 4,5FU | 8FU |
|---------|-----|------------|---------|---------|--------|----------|-----------|-----------|
| 208V | 1/2 | VFS11-2004 | 1.6~2.5 | 7 | LC1D09 | 100 | 2.0A/600V | 1.0A/250V |
| | 1 | VFS11-2007 | 4~6 | 7 | LC1D09 | 100 | 2.0A/600V | 1.0A/250V |
| | 2 | VFS11-2015 | 5.5~8 | 15 | LC1D09 | 100 | 2.0A/600V | 1.0A/250V |
| | 3 | VFS11-2022 | 9~13 | 15 | LC1D12 | 100 | 2.0A/600V | 1.0A/250V |
| | 5 | VFS11-2037 | 12~18 | 30 | LC1D18 | 100 | 2.0A/600V | 1.0A/250V |
| | 7.5 | VFS11-2055 | 17~25 | 50 | LC1D25 | 100 | 2.0A/600V | 1.0A/250V |
| | 10 | VFS11-2075 | 25~32 | 50 | LC1D32 | 100 | 2.0A/600V | 1.0A/250V |
| | 15 | VFS11-2110 | 37~50 | 75 | LC1D50 | 150 | 3.0A/600V | 1.4A/250V |
| | 20 | VFS11-2150 | 55~70 | 75 | LC1D65 | 150 | 3.0A/600V | 1.4A/250V |

| VOLTAGE | HP | VFD | OL (A) | MCP (A) | 2M,3M | CPT (VA) | 4,5FU | 8FU |
|---------|-----|------------|---------|---------|--------|----------|-----------|-----------|
| 230V | 1/2 | VFS11-2004 | 1.6~2.5 | 7 | LC1D09 | 100 | 1.8A/600V | 1.0A/250V |
| | 1 | VFS11-2007 | 4~6 | 7 | LC1D09 | 100 | 1.8A/600V | 1.0A/250V |
| | 2 | VFS11-2015 | 5.5~8 | 15 | LC1D09 | 100 | 1.8A/600V | 1.0A/250V |
| | 3 | VFS11-2022 | 7~10 | 15 | LC1D12 | 100 | 1.8A/600V | 1.0A/250V |
| | 5 | VFS11-2037 | 12~18 | 30 | LC1D18 | 100 | 1.8A/600V | 1.0A/250V |
| | 7.5 | VFS11-2055 | 17~25 | 30 | LC1D25 | 100 | 1.8A/600V | 1.0A/250V |
| | 10 | VFS11-2075 | 25~32 | 50 | LC1D32 | 100 | 1.8A/600V | 1.0A/250V |
| | 15 | VFS11-2110 | 37~50 | 75 | LC1D50 | 150 | 2.5A/600V | 1.4A/250V |
| | 20 | VFS11-2150 | 48~65 | 75 | LC1D65 | 150 | 2.5A/600V | 1.4A/250V |

| VOLTAGE | HP | VFD | OL (A) | MCP (A) | 2M,3M | CPT (VA) | 4,5FU | 8FU |
|---------|-----|------------|---------|---------|--------|----------|---------|---------|
| 460V | 1 | VFS11-4007 | 1.6~2.5 | 3 | LC1D09 | 100 | 1A/600V | 1A/250V |
| | 2 | VFS11-4015 | 2.5~4 | 7 | LC1D09 | 100 | 1A/600V | 1A/250V |
| | 3 | VFS11-4022 | 4~6 | 7 | LC1D09 | 100 | 1A/600V | 1A/250V |
| | 5 | VFS11-4037 | 5.5~8 | 15 | LC1D09 | 100 | 1A/600V | 1A/250V |
| | 7.5 | VFS11-4055 | 9~13 | 15 | LC1D12 | 100 | 1A/600V | 1A/250V |
| | 10 | VFS11-4075 | 12~18 | 30 | LC1D18 | 100 | 1A/600V | 1A/250V |
| | 15 | VFS11-4110 | 17~25 | 30 | LC1D25 | 100 | 1A/600V | 1A/250V |
| | 20 | VFS11-4150 | 23~28 | 50 | LC1D32 | 100 | 1A/600V | 1A/250V |

| VOLTAGE | HP | VFD | OL (A) | MCP (A) | 2M,3M | CPT (VA) | 4,5FU | 8FU |
|---------|-----|------------|--------|---------|--------|----------|---------|---------|
| 600V | 2 | VFS11-6015 | 2.5~4 | 7 | LC1D09 | 100 | 1A/600V | 1A/250V |
| | 3 | VFS11-6022 | 2.5~4 | 7 | LC1D09 | 100 | 1A/600V | 1A/250V |
| | 5 | VFS11-6037 | 5.5~8 | 15 | LC1D09 | 100 | 1A/600V | 1A/250V |
| | 7.5 | VFS11-6055 | 7~10 | 15 | LC1D09 | 100 | 1A/600V | 1A/250V |
| | 10 | VFS11-6075 | 9~13 | 15 | LC1D12 | 100 | 1A/600V | 1A/250V |
| | 15 | VFS11-6110 | 12~18 | 30 | LC1D18 | 100 | 1A/600V | 1A/250V |
| | 20 | VFS11-6150 | 17~25 | 30 | LC1D25 | 100 | 1A/600V | 1A/250V |

| 4 | | | | | |
|-----|----------|-----------------|----------|-----|------|
| 3 | | | | | |
| 2 | | | | | |
| 1 | 05/24/05 | ADD 600V RATING | jedwards | | |
| 0 | 09/30/04 | FIRST ISSUE | CMorales | CM | GBF |
| REV | DATE | DESCRIPTION | BY | CHK | APPR |

TOSHIBA
TOSHIBA INTERNATIONAL CORPORATION
 MADE IN HOUSTON, TEXAS U.S.A.

THIS MATERIAL IS THE EXCLUSIVE PROPERTY OF TOSHIBA INTERNATIONAL CORPORATION AND SHALL NOT BE REPRODUCED, USED, OR DISCLOSED TO OTHERS UNLESS PRIOR WRITTEN AUTHORIZATION IS OBTAINED.

TITLE:
RATING SHEET

CUSTOMER:

PROJECT NUMBER:

REVISION:

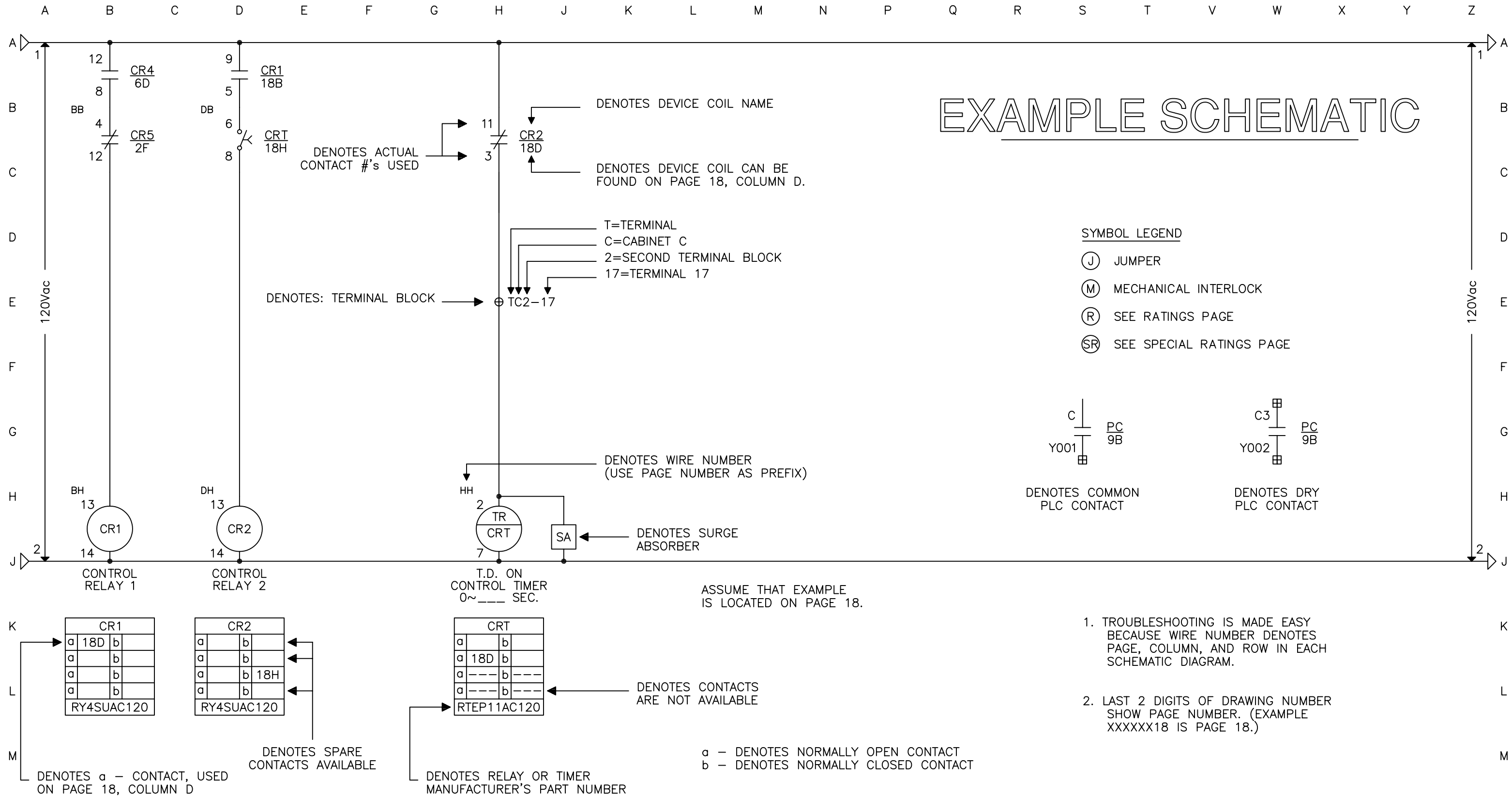
1

SCALE:

1.0=1.5

DRAWING NUMBER:

1808GY16



| 4 | | | | | |
|-----|----------|-------------|----------|-----|------|
| 3 | | | | | |
| 2 | | | | | |
| 1 | | | | | |
| 0 | 09/30/04 | FIRST ISSUE | CMorales | | |
| REV | DATE | DESCRIPTION | BY | CHK | APPR |

TOSHIBA
TOSHIBA INTERNATIONAL CORPORATION
 MADE IN HOUSTON, TEXAS U.S.A.

THIS MATERIAL IS THE EXCLUSIVE PROPERTY OF TOSHIBA INTERNATIONAL CORPORATION AND SHALL NOT BE REPRODUCED, USED, OR DISCLOSED TO OTHERS UNLESS PRIOR WRITTEN AUTHORIZATION IS OBTAINED.

TITLE: LEGEND

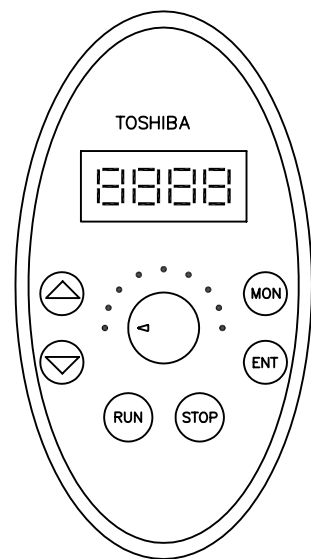
CUSTOMER: _____ PROJECT NUMBER: _____

REVISION: 0 SCALE: 1.0=1.5

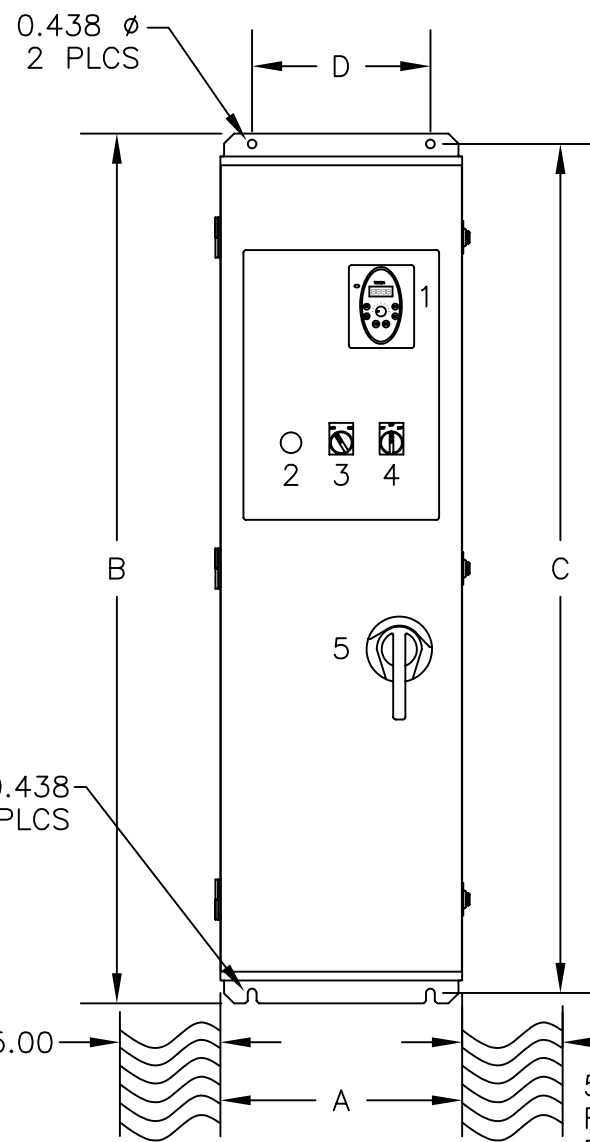
DRAWING NUMBER: 1808GY18

DEVICE LEGEND

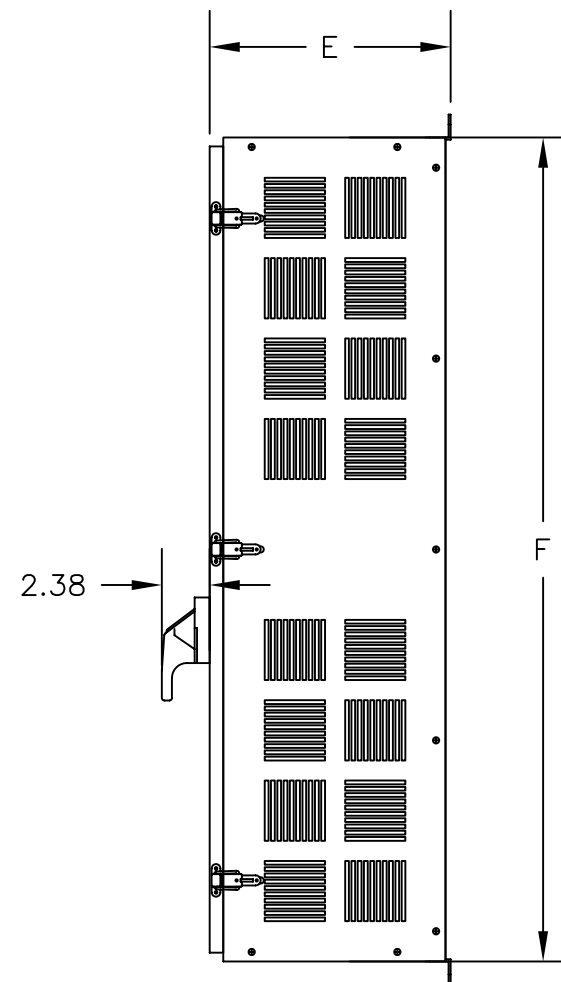
1. S11 OPERATOR KEYPAD
2. HOLE PLUG
3. "LOC/REM" SWITCH
4. "INVERTER/OFF/BYPASS" SELECTOR SWITCH
5. CIRCUIT DISCONNECT



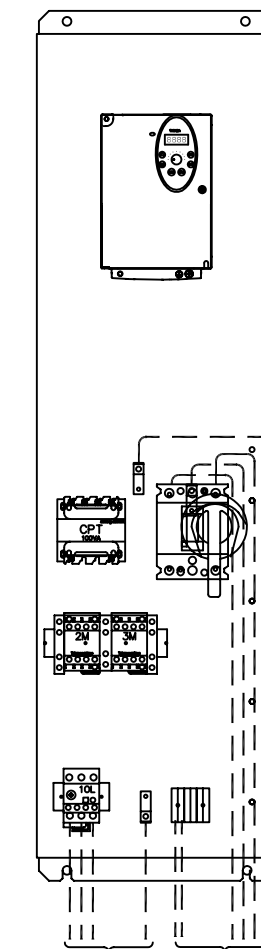
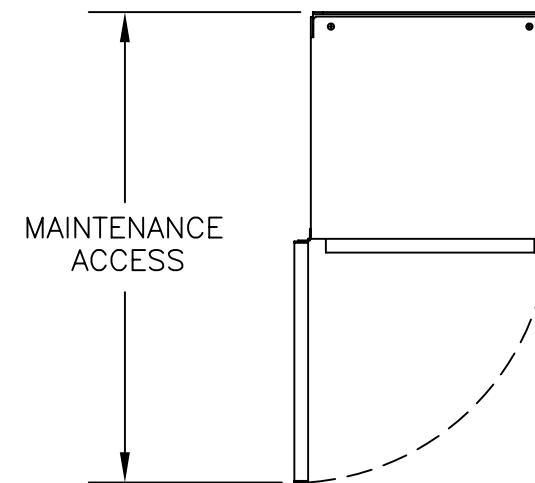
S11 KEYPAD DETAIL



FRONT VIEW



RIGHT SIDE VIEW



| HP RATING | 208/230V | | | | | | APPROX. WT. lbs. | MAINT. ACCESS |
|-----------|----------|-------|-------|-------|-------|-------|------------------|---------------|
| | A | B | C | D | E | F | | |
| 1/2 | 12.00 | 43.29 | 42.25 | 8.88 | 11.99 | 41.00 | 65 | 23.50 |
| 1 | 12.00 | 43.29 | 42.25 | 8.88 | 11.99 | 41.00 | 65 | 23.50 |
| 2 | 12.00 | 43.29 | 42.25 | 8.88 | 11.99 | 41.00 | 65 | 23.50 |
| 3 | 12.00 | 43.29 | 42.25 | 8.88 | 11.99 | 41.00 | 70 | 23.50 |
| 5 | 12.00 | 43.29 | 42.25 | 8.88 | 11.99 | 41.00 | 70 | 23.50 |
| 7.5 | 12.00 | 43.29 | 42.25 | 8.88 | 11.99 | 41.00 | 75 | 23.50 |
| 10 | 12.00 | 43.29 | 42.25 | 8.88 | 11.99 | 41.00 | 75 | 23.50 |
| 15 | 18.00 | 48.29 | 47.25 | 11.88 | 16.00 | 46.12 | 140 | 33.31 |
| 20 | 18.00 | 48.29 | 47.25 | 11.88 | 16.00 | 46.12 | 140 | 33.31 |

| HP RATING | 460/600V | | | | | | APPROX. WT. lbs. | MAINT. ACCESS |
|-----------|----------|-------|-------|-------|-------|-------|------------------|---------------|
| | A | B | C | D | E | F | | |
| 1 | 12.00 | 43.29 | 42.25 | 8.88 | 11.99 | 41.00 | 65 | 23.50 |
| 2 | 12.00 | 43.29 | 42.25 | 8.88 | 11.99 | 41.00 | 65 | 23.50 |
| 3 | 12.00 | 43.29 | 42.25 | 8.88 | 11.99 | 41.00 | 70 | 23.50 |
| 5 | 12.00 | 43.29 | 42.25 | 8.88 | 11.99 | 41.00 | 70 | 23.50 |
| 7.5 | 12.00 | 43.29 | 42.25 | 8.88 | 11.99 | 41.00 | 75 | 23.50 |
| 10 | 12.00 | 43.29 | 42.25 | 8.88 | 11.99 | 41.00 | 75 | 23.50 |
| 15 | 18.00 | 48.29 | 47.25 | 11.88 | 16.00 | 46.12 | 150 | 33.31 |
| 20 | 18.00 | 48.29 | 47.25 | 11.88 | 16.00 | 46.12 | 150 | 33.31 |

| REV | DATE | DESCRIPTION | BY | CHK | APPR |
|-----|----------|-----------------|----------|-----|------|
| 4 | | | | | |
| 3 | | | | | |
| 2 | | | | | |
| 1 | 05/24/05 | ADD 600V RATING | jedwards | | |
| 0 | 09/30/04 | FIRST ISSUE | CMorales | CM | GBF |

TOSHIBA
TOSHIBA INTERNATIONAL CORPORATION
MADE IN HOUSTON, TEXAS U.S.A.

THIS MATERIAL IS THE EXCLUSIVE PROPERTY OF TOSHIBA INTERNATIONAL CORPORATION AND SHALL NOT BE REPRODUCED, USED, OR DISCLOSED TO OTHERS UNLESS PRIOR WRITTEN AUTHORIZATION IS OBTAINED.

| | | | |
|---------------------------|-----------------|-----------------------------|--------------------|
| TITLE: OUTLINE DIAGRAM | | REVISION: 1 | SCALE: 1.0=10.0 |
| CUSTOMER: | PROJECT NUMBER: | DRAWING NUMBER: I108GY19 | |

