

# Additional data for PCM001Z V100

## 1. The contents of additional data

By executing the installer, the following inverter types are added to PCM001Z (V100) already installed in PC.

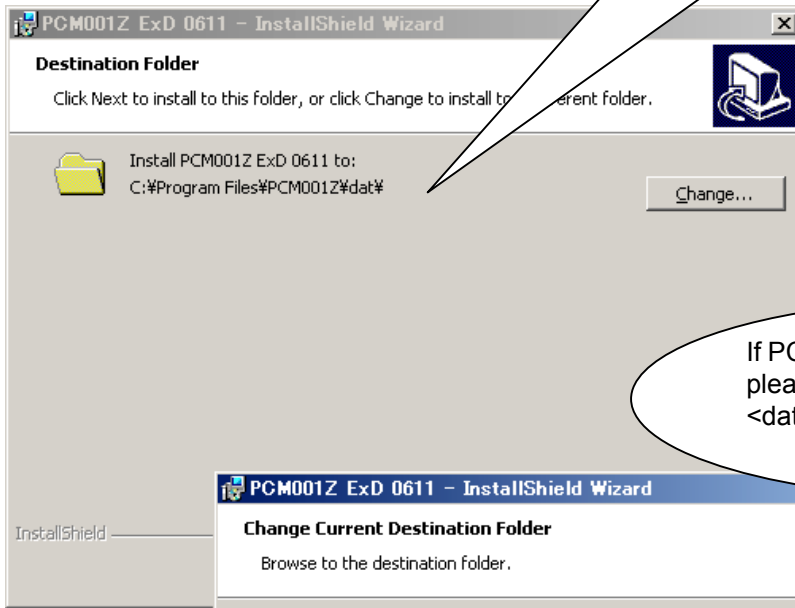
- VFPS1 ..... V612
- VFAS1 ..... V130, V134
- VFFS1 ..... V108
- VFS11..... V117, V118, V119

## 2. About the Install and Uninstall

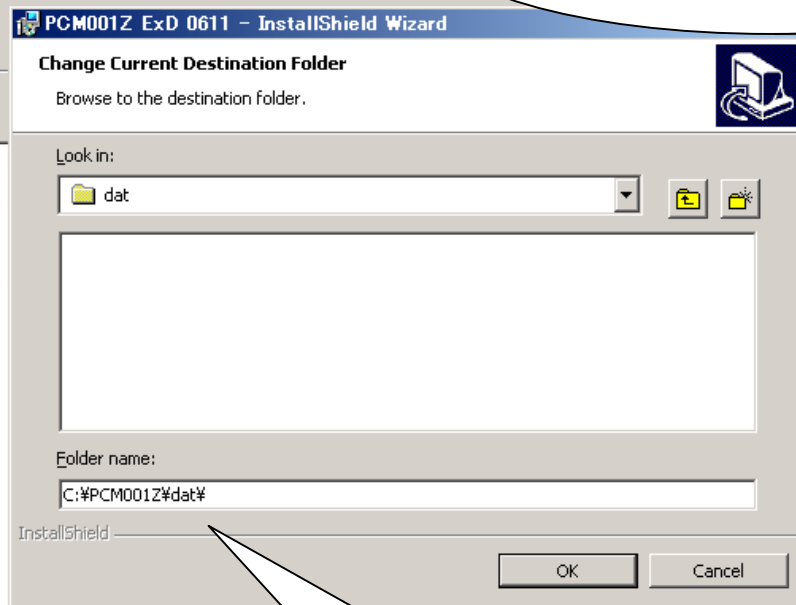
- Installation is performed by executing "setup.exe."
  
- The installation place should choose the <dat> folder of installed PCM001Z.  
Default installation place of PCM001Z: C:¥Program Files¥PCM001Z (refer to the next page).
  
- "PCM001Z\_ExD\_0611" is only for PCM001Z (V100). Do not install to the previous version.
  
- Do not uninstall of only "PCM001Z\_ExD\_0611".

**Install folder**

\* It's default installation folder of PCM001Z



If PCM001Z is installed in other places, please click this button and select the <dat> folder of PCM001Z.



Example.  
When PCM001Z was installed at  
"C:\Program Files\PCM001Z"