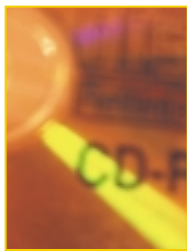


# 4X4X4.8X24



## *CD-RW/DVD-ROM Drive*

As a leader in optical storage products Toshiba leverages its technology expertise to deliver the SD-R1002. **The world's first combination CD-RW drive with DVD-ROM readability to hit the market.** The drive features a fast writing speed of 4X for CD-R and CD-RW, and employs a full 24X speed maximum playback for CD-ROM and 4.8X for DVD-ROM.

Built to give the best performance for data, multimedia and storage environments, the drive combines key technologies CD-RW and DVD-ROM including lasers and LSIs from both as well as a combination pick up head. **The SD-R1002's backward compatibility to CD technology, use of low cost media, and effortless transition from CD to DVD make this the ideal upgrade product.** The drive adheres to the DVD Forum's DVD-ROM specifications. All of this packed in to a standard half height drive.

### **4x4x4.8x24 SD-R1002**

- 4X Record CD-R
- 4X Rewrite CD-RW
- 4.8X DVD Read
- 24X CD Read
- Horizontal or Vertical mount
- 650MB capacity
- Random Seek Time:
  - DVD read: 140ms
  - CD-ROM read: 105ms
- Data Transfer Rate Sustained: Writing 600KB/s (4X)
- Reading:
  - Max 6,490KB/s (DVD-ROM)
  - Max 3,600KB/s (CD-ROM)
- 2 MB Buffer
- MTBF 100,000 POH's

In Touch with Tomorrow  
**TOSHIBA**

4X4X4, 8X24

## SD-R1002 CD-RW/DVD-ROM Drive Specifications

<b>MODEL NUMBER</b>	SD-R1002	Internal ATAPI (enhanced IDE)
<b>DATA TRANSFER RATE</b>	Sustained Mode Writing:CD-R, CD-RW	600KB/sec
	Sustained Mode Reading:DVD-ROM	6,490 max KB/sec
	Sustained Mode Reading:CD-ROM	3,600 max KB/sec
	Burst (ATAPI-Multi word DMA Mode 2)	16.7 MB/sec
	Burst (ATAPI-PIO Mode 4)	16.7 MB/sec
	Buffer Size	2 MB
<b>ACCESS TIME</b>	Average Random Access-DVD-ROM (4x) time	160ms
	Average Random Access-CD-ROM (24x) time	110ms
	Average Random Seek Time-DVD-ROM (4.8x) time	140ms
	Average Random Seek Time-CD-ROM (24x) time	105ms
<b>COMPATIBLE CD-RW/DVD-ROM STANDARDS—WRITE</b>	Write Formats: CD-R, CD-RW	Disc at once, Track at once, session at once, Packet Write
	Write Disc: CD-R, CD-RW	CD-DA, CD+(E) G, CD-MIDI, CD-TEXT, CD-ROM, CD-ROM XA, CD-I Bridge (Photo-CD, Video CD, Multisession CD), (Photo CD Disc, CD-Extra,)
<b>COMPATIBLE CD-RW/DVD-ROM STANDARDS—READ</b>	DVD-ROM	DVD-ROM (DVD-5, DVD-9, DVD-10, DVD-18), DVD-R(Read)
	CD-ROM	CD-DA, CD+(E) G, CD-MIDI, CD-TEXT, CD-ROM, CD-ROM XA, CD-I, CD-I Bridge (Photo-CD, Video CD), (Photo CD Disc, CD-Extra, CD-R, CD-RW), CD-R(Read) CD-RW(Read)
<b>AMBIENT TEMPERATURE</b>	Operating Temperature	5°C to 40°C
	Storage Temperature	-10° to 60°C
	Operating Humidity(non-condensing)	8% to 80%
<b>DATA ERROR RATE</b>	DVD-ROM	10 <sup>-15</sup> Max
	CD-ROM	10 <sup>-15</sup> Max (Mode 1) 10 <sup>-12</sup> Max (Mode 2)
<b>MOUNTING ORIENTATION</b>	20° horiz	10° vert
<b>PHYSICAL CHARACTERISTICS</b>	Dimensions	1.6" x 5.7" x 7.6" (41.5mmx146mmx193mm)
	Weight	2.16lbs (0.98kg)
	Power Requirements	+5V, +12V (±5%)

In Touch with Tomorrow  
**TOSHIBA**

**TOSHIBA AMERICA ELECTRONIC COMPONENTS, INC.**

**DISK PRODUCTS**

35 Hammond, Irvine, CA 92618, (949) 457-0777, FAX (949) 588-7845,  
[www.toshiba.com/taecdps/](http://www.toshiba.com/taecdps/)

Specifications are subject to change without notice. Toshiba is a registered trademark of Toshiba Corporation. Printed in USA.