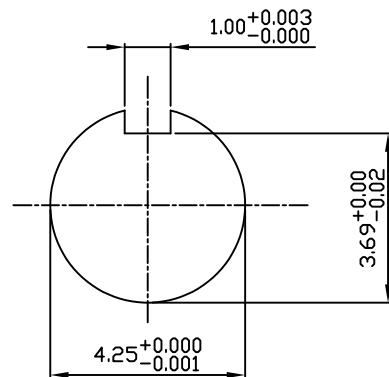


TECHNICAL INFORMATION

1. BEARING LUBRICATION DE: MOBIL POLYREX EM
ODE: MOBIL POLYREX EM
2. BEARING TYPE DE: 6326C3
ODE: 6326C3 INSULATED
3. WINDING TEMP. DETECTORS
NUMBER AND TYPE: 6xRTD(Pt0°C-100ohm)
LOCATION: IN STATOR SLOT
4. BEARING TEMP. DETECTORS
NUMBER AND TYPE: _____
5. SPACE HEATER 1 PHASE
VOLTS: 120 WATTS: 400
6. ROTATION: CCW VIEWED FROM NON DRIVE END
THIS MOTOR IS BI DIRECTIONAL
7. MOTOR PAINT COLOR: _____
8. APPROX. WEIGHT: 7300 Lbs
9. ACCESORIES: _____



DRAWING LIST

| | | | | | |
|----------------------------------|-------------|-----|---|----|---------|
| MAIN TERMINAL BOX 130-7532-02 | | | | | |
| AUX TERMINAL BOX FOR | | | | | |
| SPACE HEATER | 130-7520-50 | | | | |
| R.T.D. | 130-7522-51 | | | | |
| THERMISTOR | N/A | | | | |
| | | 5 | CHANGE AUX BOX DIM FROM 14.6 CHANGE JACKING BOLTS FROM 4 | HL | 3/16/20 |
| PRODUCTION # | N/A | NO. | REVISION | BY | DATE |

**MOTOR OUTLINE FOR
THREE PHASE INDUCTION MOTOR**

| | | | | | | |
|--|------------------------|----------------|-------------------|--------------------------------------|---------------------------|-----------------|
| CUSTOMER NAME | | | | P.O. NO. | MOTOR TAG NO. | |
| OUTPUT HP | POLE 8 | VOLTAGE V | FREQUENCY Hz | FULL LOAD SPEED (min ⁻¹) | TOSHIBA MODEL NO. | |
| TYPE | FORM | INS. CLASS F | RATING CONT. | FRAME 5810/11/12 | S.F. | ENCLOSURE WP-II |
| TOSHIBA INTERNATIONAL CORPORATION HOUSTON, TEXAS U.S.A. | | | | | | |
| 3rd ANGLE PROJ. | PREPARED BY: R.WILKINS | DATE: 03/25/03 | CHECKED BY: M. HO | DATE: 04/01/03 | DRAWING NO.: MDSL 0087-04 | REV. 5 |

TYPICAL MOTOR PERFORMANCE DATA

Model: 4008WTAL11E-C

| | | | | | | | | |
|-----------|-----|------------|--------|--------|----------------|-------------|----------|--------------|
| HP | kW | Pole | FL RPM | Frame | Voltage | Hz | Phase | FL Amps |
| 400 | 298 | 8 | 885 | 5812US | 4000 | 60 | 3 | 60 |
| Enclosure | IP | Ins. Class | S.F. | Duty | NEMA Nom. Eff. | NEMA Design | kVA Code | Ambient (°C) |
| WP-II | 24 | F | 1.15 | CONT | 94.1 | - | | 40 C |

| | | | | | |
|--------------|--------|-------|---------|----------------|------------------|
| Load | HP | kW | Amperes | Efficiency (%) | Power Factor (%) |
| Full Load | 400.00 | 298.3 | 59 | 94.3 | 76.3 |
| ¾ Load | 300.00 | 223.7 | 48 | 94.0 | 71.1 |
| ½ Load | 200.00 | 149.1 | 38 | 93.0 | 60.3 |
| ¼ Load | 100.00 | 74.6 | 31 | 89.1 | 38.7 |
| No Load | | | 26.8 | | 3.1 |
| Locked Rotor | | | 367 | | 22.2 |

| | | | | |
|-------------------|----------------------|-----------------|--------------------|-------------------------------|
| Torque | | | | Rotor wk ² |
| Full Load (lb-ft) | Locked Rotor (% FLT) | Pull Up (% FLT) | Break Down (% FLT) | Inertia (lb-ft ²) |
| 2371 | 175 | 170 | 300 | 449.31 |

| | | | | | |
|--------------------|-----|---------------------------|-----------|------------|----------------------------|
| Safe Stall Time(s) | | Sound Pressure dB(A) @ 1M | Bearings* | | Approx. Motor Weight (lbs) |
| Cold | Hot | | DE | NDE | |
| 14 | 5 | - | 6326C3 | 6326C3 INS | |

*Bearings are the only recommended spare part(s).

Motor Options:
Product Family:WP-II
Mounting:Footed,Shaft:US Shaft

| | |
|-------------|--|
| Customer | |
| Customer PO | |
| Sales Order | |
| Project # | |

Tag:

All characteristics are average expected values.

TOSHIBA INTERNATIONAL CORPORATION · HOUSTON, TEXAS U.S.A.

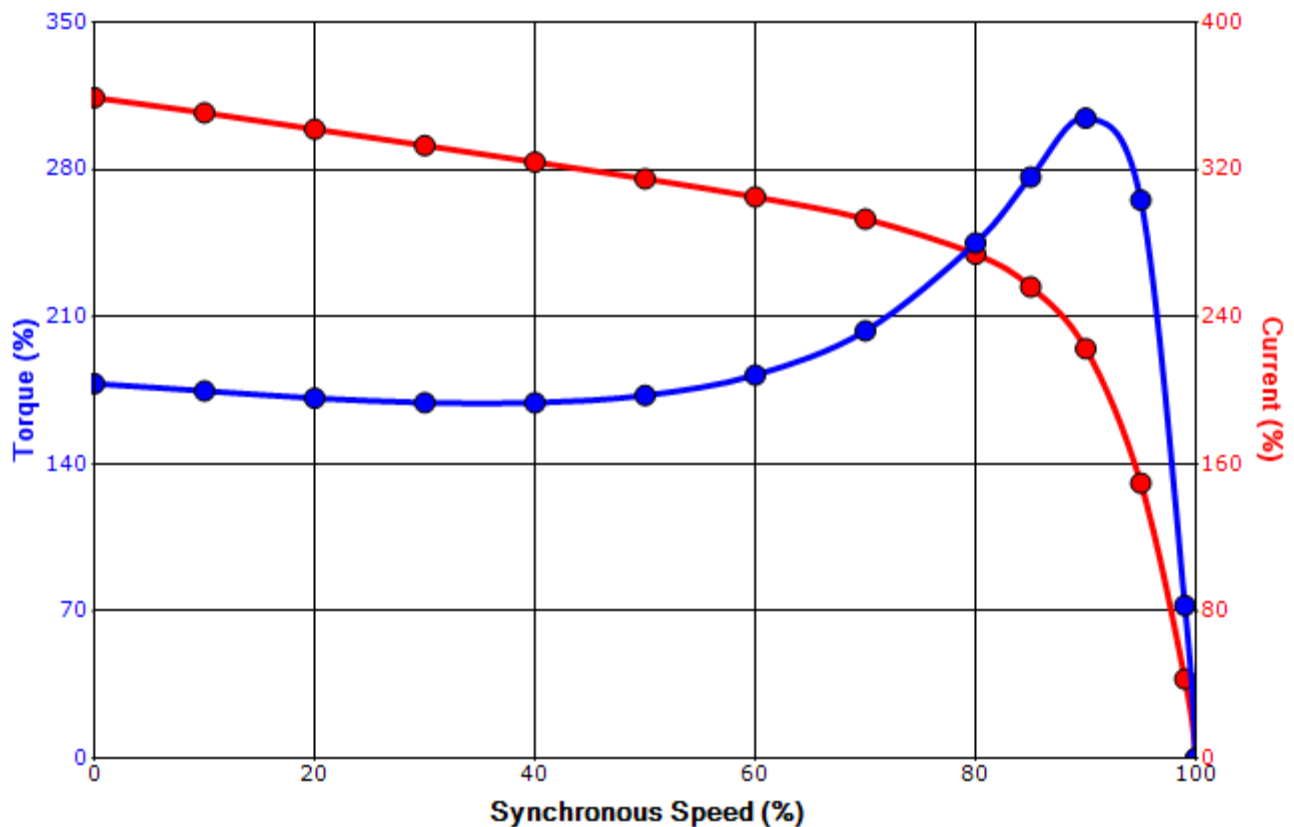
| | | | | | |
|-------------|-----------|------------------|-------------|-------------|---------------|
| Engineering | bmmamen | Doc. Written By | D. Suarez | Doc.# / Rev | MPCF-1119 / 0 |
| Engr. Date | 7/14/2014 | Doc. Approved By | M. Campbell | Doc. Issued | 6/8/2011 |

SPEED TORQUE/CURRENT CURVE

Model: 4008WTAL11E-C

| | | | | | | | | |
|-------------------|---|-------------------|------------------|-------------|----------------|-------------|----------|----------------|
| HP | kW | Pole | FL RPM | Frame | Voltage | Hz | Phase | FL Amps |
| 400 | 298 | 8 | 885 | 5812US | 4000 | 60 | 3 | 60 |
| Enclosure | IP | Ins. Class | S.F. | Duty | NEMA Nom. Eff. | NEMA Design | kVA Code | Ambient (°C) |
| WP-II | 24 | F | 1.15 | CONT | 94.1 | - | | 40 C |
| Locked Rotor Amps | Rotor wk ² Inertia (lb-ft ²) | Torque | | | | | | Break Down (%) |
| | | Full Load (lb-ft) | Locked Rotor (%) | Pull Up (%) | | | | |
| 367 | 449.31 | 2371 | 175 | 170 | | | 300 | |

Design Values



| | | | |
|-------------|--|--|-----|
| Customer | | wk ² Load Inertia (lb-ft ²) | - |
| Customer PO | | Load Type | - |
| Sales Order | | Voltage (%) | 100 |
| Project # | | Accel. Time | - |

Tag:

All characteristics are average expected values.

TOSHIBA INTERNATIONAL CORPORATION · HOUSTON, TEXAS U.S.A.

| | | | | | |
|-------------|-----------|------------------|-------------|-------------|---------------|
| Engineering | bmammen | Doc. Written By | D. Suarez | Doc.# / Rev | MPCF-1121 / 0 |
| Engr. Date | 7/14/2014 | Doc. Approved By | M. Campbell | Doc. Issued | 6/8/2011 |