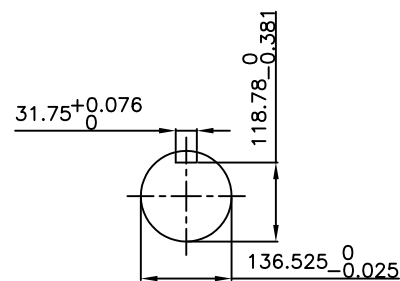


**TECHNICAL INFORMATION**

1. BEARING LUBRICATION DE: TURBINE OIL ISO VG32  
ODE: TURBINE OIL ISO VG32
2. BEARING TYPE DE: M11-125 INS  
ODE: M11-125 INS
3. WINDING TEMP. DETECTORS  
NUMBER AND TYPE: 6xRTD(Pt0°C-100ohm)  
LOCATION: IN STATOR SLOT
4. BEARING TEMP. DETECTORS  
NUMBER AND TYPE: N/A
5. SPACE HEATER 1 PHASE  
VOLTS: 120 WATTS: 800
6. ROTATION: CCW VIEWED FROM NON DRIVE END  
THIS MOTOR IS UNI DIRECTIONAL
7. MOTOR PAINT COLOR: GRAY
8. APPROX. WEIGHT: 6,450 Kg
9. ACCESORIES:

**PRELIMINARY  
FOR QUOTATION ONLY  
DO NOT BUILD  
FROM THIS DRAWING**

TOSHIBA INTERNATIONAL CORPORATION  
RESERVES THE RIGHT TO MAKE TECHNICAL  
IMPROVEMENT AND DATA CHANGES WITHOUT NOTICE



**DRAWING LIST**

MAIN TERMINAL BOX					
130P-7550-68					
AUX TERMINAL BOX FOR					
SPACE HEATER	139-0052-01				
R.T.D.	139-0052-04				
THERMISTOR	N/A				
		0	FIRST ISSUE	ME	4/14/15
PRODUCTION #	N/A	NO.	REVISION	BY	DATE

**MOTOR OUTLINE FOR  
THREE PHASE INDUCTION MOTOR**

CUSTOMER NAME				P.O. NO.	MOTOR TAG NO.	
OUTPUT HP	POLE 6	VOLTAGE V	FREQUENCY Hz	FULL LOAD SPEED (min <sup>-1</sup> )	TOSHIBA MODEL NO.	
TYPE	FORM	INS. CLASS F	RATING CONT.	FRAME 6810US	S.F.	ENCLOSURE TEAAC
TOSHIBA INTERNATIONAL CORPORATION HOUSTON, TEXAS U.S.A.						
3rd ANGLE PROJ.	PREPARED BY: M.Easterbrook	DATE: 4/14/15	CHECKED BY: S.Johnson	DATE: 6/11/15	DRAWING NO.: MDSL0077-68	REV. 0