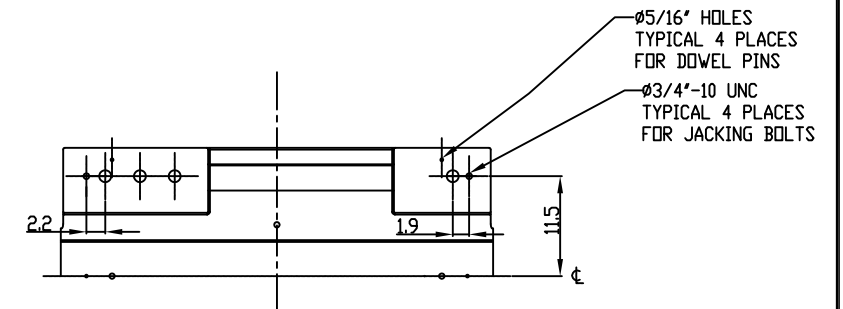
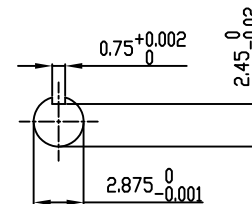


**TECHNICAL INFORMATION**

1. BEARING LUBRICATION DE: TURBINE OIL ISO VG32  
ODE: TURBINE OIL ISO VG32
2. BEARING TYPE DE: M9S-90 INS  
ODE: M9S-90 INS
3. WINDING TEMP. DETECTORS  
NUMBER AND TYPE: 6xRTD(Pt0°C-100ohm)  
LOCATION: IN STATOR SLOT
4. BEARING TEMP. DETECTORS  
NUMBER AND TYPE: \_\_\_\_\_
5. SPACE HEATER 1 PHASE  
VOLTS: 120 WATTS: 400
6. ROTATION: CCW VIEWED FROM NON DRIVE END  
THIS MOTOR IS UNI DIRECTIONAL
7. MOTOR PAINT COLOR: \_\_\_\_\_
8. APPROX. WEIGHT: 7300 Lbs
9. ACCESORIES:

PRELIMINARY DRAWING ONLY  
(DO NOT BUILD)



UNITS: INCHES

DRAWING LIST				MOTOR OUTLINE FOR THREE PHASE INDUCTION MOTOR													
MAIN TERMINAL BOX 130-7532-02				CUSTOMER NAME		P.O. NO.		MOTOR TAG NO.									
AUX TERMINAL BOX FOR SPACE HEATER 130-7520-50 R.T.D. 130-7522-51 THERMISTOR N/A				2	CORRECT JACKING HOLE LOCATION FROM 1.7"	ED	2/24/14	OUTPUT HP	POLE 2	VOLTAGE V	FREQUENCY Hz	FULL LOAD SPEED (min <sup>-1</sup> )	TOSHIBA MODEL NO.				
PRODUCTION # N/A				1	JACKING TO INLINE	RWS	1/3/14	TYPE	FORM	INS. CLASS F	RATING CONT.	FRAME 5809/10/11	S.F.	ENCLOSURE WP-II			
NO. REVISION				0	FIRST ISSUE	BCS	12/4/13	TOSHIBA INTERNATIONAL CORPORATION HOUSTON, TEXAS U.S.A.									
BY DATE				3rd ANGLE PROJ.		PREPARED BY: B SIDLE		DATE: 12/4/13		CHECKED BY: ED R.		DATE: 12/31/13		DRAWING NO.: MDSL0087-111		REV. 2	