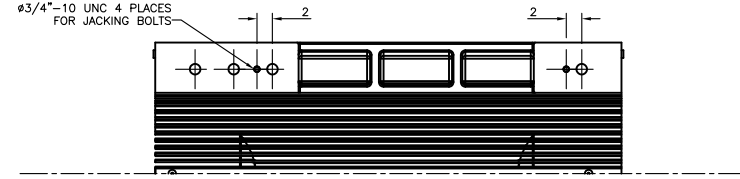
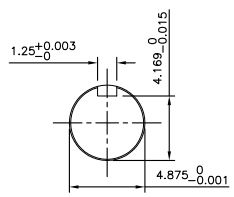


TECHNICAL INFORMATION	
1. BEARING LUBRICATION	DE: <u>TURBINE OIL ISO VG32</u> ODE: <u>TURBINE OIL ISO VG32</u>
2. BEARING TYPE	DE: <u>M11-125 INS</u> ODE: <u>M11-125 INS</u>
3. WINDING TEMP. DETECTORS	NUMBER AND TYPE: <u>6xRTD(PtO°C-100ohm)</u> LOCATION: <u>IN STATOR SLOT</u>
4. BEARING TEMP. DETECTORS	NUMBER AND TYPE: _____
5. SPACE HEATER	<u>1</u> PHASE VOLTS: <u>120</u> WATTS: <u>720</u>
6. ROTATION:	<u>CCW</u> VIEWED FROM NON DRIVE END THIS MOTOR IS <u>BI</u> DIRECTIONAL
7. MOTOR PAINT COLOR:	<u>GRAY</u>
8. APPROX. WEIGHT:	<u>12600</u> Lbs
9. ACCESSORIES:	_____

**PRELIMINARY  
FOR QUOTATION ONLY  
DO NOT BUILD  
FROM THIS DRAWING**

TOSHIBA INTERNATIONAL CORPORATION  
RESERVES THE RIGHT TO MAKE TECHNICAL  
IMPROVEMENT AND DATA CHANGES WITHOUT NOTICE



UNITS: INCH

DRAWING LIST		NO.	REVISION	BY	DATE
MAIN TERMINAL BOX	130P-7550-73				
AUX TERMINAL BOX FOR					
SPACE HEATER	130-7520-50				
R.T.D.	130-7522-51	1	AIR DEF. ASSY ADDED JACKING HOLE LOCATION CHANGED WEIGHT, S.H OUTPUT CHANGED	ES	5/20/14
THERMISTOR	N/A				
		0	FIRST ISSUE	SJ	4/25/13
PRODUCTION #	N/A	NO.	REVISION	BY	DATE

MOTOR OUTLINE FOR THREE PHASE INDUCTION MOTOR						
CUSTOMER NAME			P.O. NO.		MOTOR TAG NO.	
OUTPUT HP	POLE	VOLTAGE V	FREQUENCY Hz	FULL LOAD SPEED (min <sup>-1</sup> )	TOSHIBA MODEL NO.	
TYPE	FORM	INS. CLASS F	RATING CONT.	FRAME 6811US	S.F.	ENCLOSURE TEFC
TOSHIBA INTERNATIONAL CORPORATION HOUSTON, TEXAS U.S.A.						
3rd ANGLE PROJ.	PREPARED BY: S Johnson	DATE: 4/25/13	CHECKED BY:	DATE:	DRAWING NO.: MDSL0071-25	REV. 1