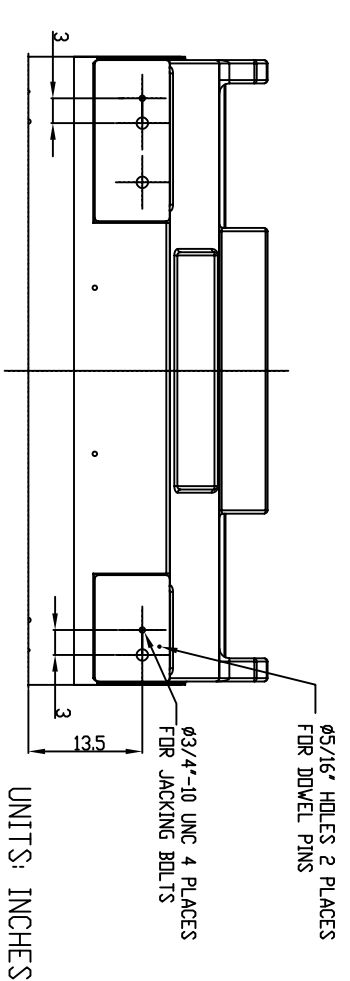
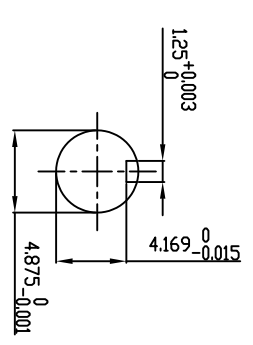
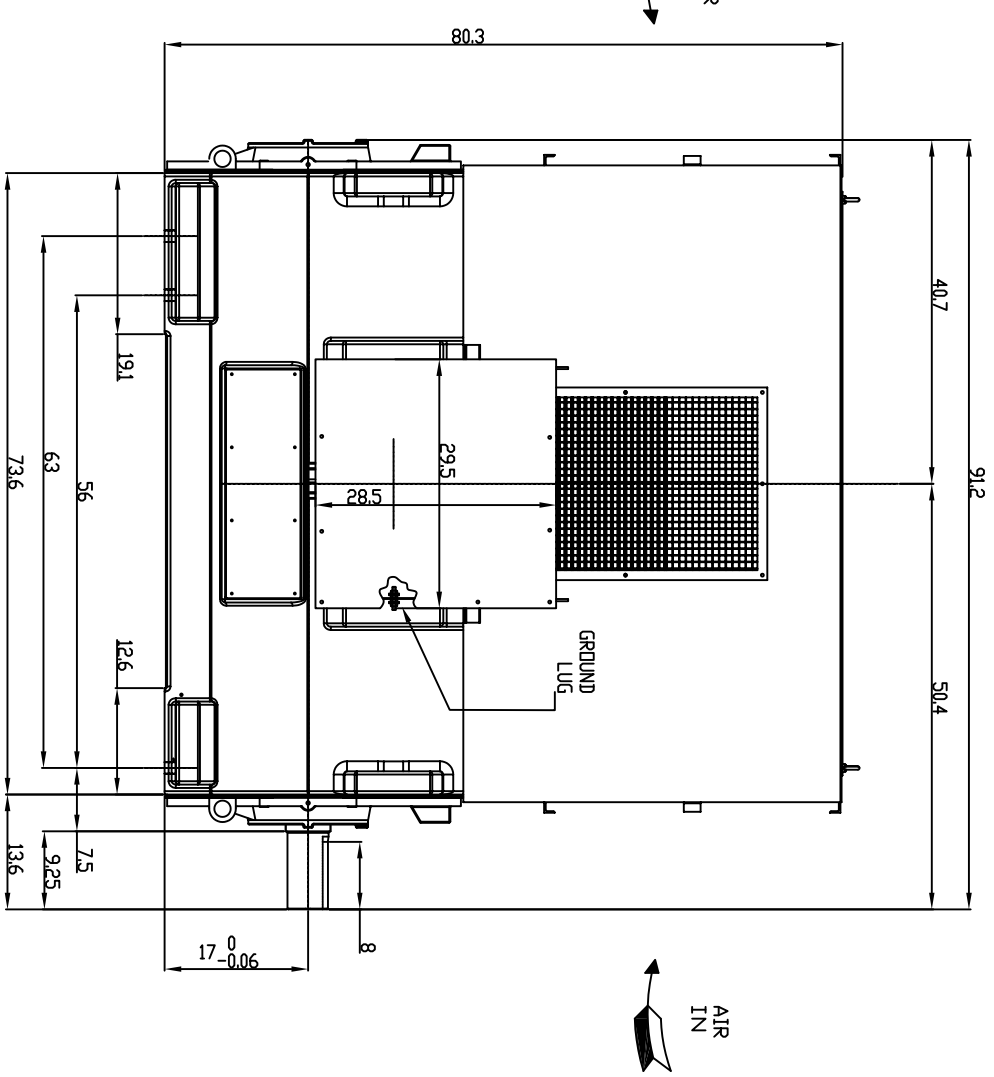
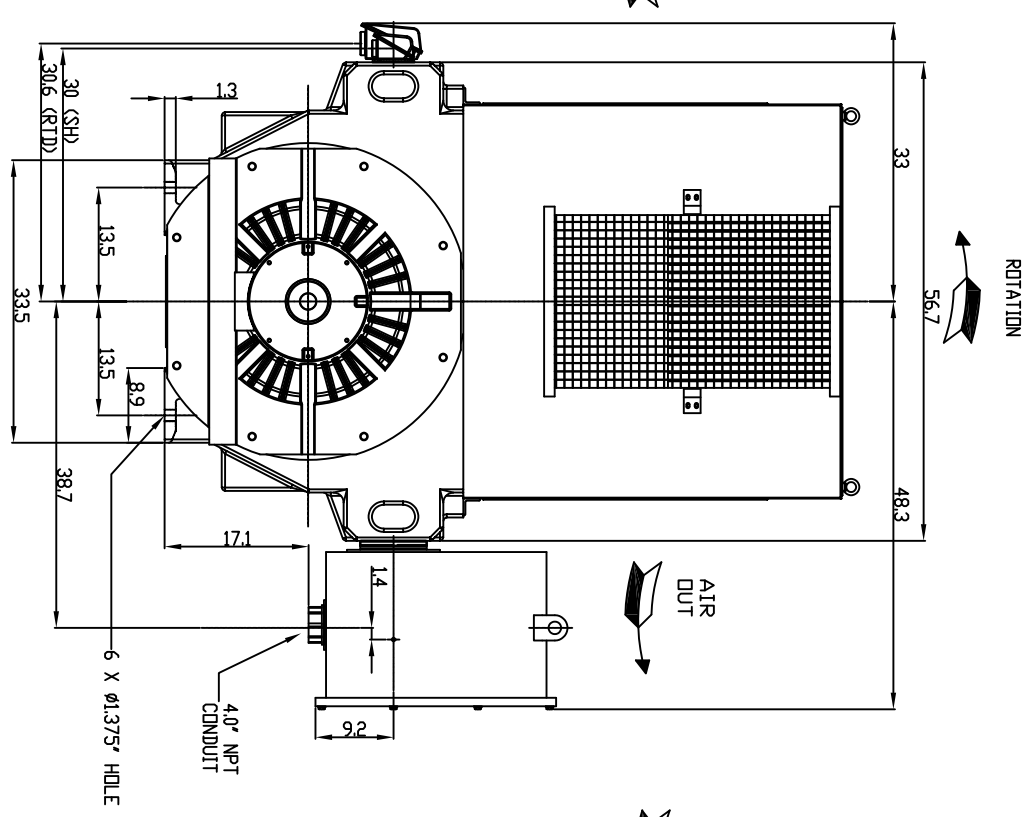


TECHNICAL INFORMATION

1. BEARING LUBRICATION DE: MOBIL POLYREX EM OR EQUIVALENT
ODE: MOBIL POLYREX EM OR EQUIVALENT
2. BEARING TYPE DE: 6328 INS
ODE: 6328 INS
3. WINDING TEMP. DETECTORS
NUMBER AND TYPE: 6XRTD(Pt0C-100ohm)
LOCATION: IN STATOR SLOT
4. BEARING TEMP. DETECTORS
NUMBER AND TYPE: _____
5. SPACE HEATER 1 PHASE
VOLTS: 120 WATTS: 800
6. ROTATION: CCW VIEWED FROM NON DRIVE END
THIS MOTOR IS UNI DIRECTIONAL
7. MOTOR PAINT COLOR: GRAY
8. APPROX. WEIGHT: 14,000 Lbs
9. ACCESSORIES: _____

**PRELIMINARY
FOR QUOTATION ONLY
DO NOT BUILD
FROM THIS DRAWING**



UNITS: INCHES

DRAWING LIST

MAIN TERMINAL BOX 130P-7550-68	
AUX TERMINAL BOX FOR	
SPACE HEATER	139-0052-01
R.T.D.	139-0052-04
THERMISTOR	N/A
PRODUCTION #	N/A

NO.	REVISION	BY	DATE
0	FIRST ISSUE	JMP	03/01/11
1	UPDATE INLET WINDOW SIZE & MAIN T-BOX P. No., CHG. SPACE HEATER WATTS FROM 400	JMP	10/12/11
2	GRS FROM SRI JACKING TO INLINE	RWS	1/2/14
3	CHANGE DOWEL PIN HOLE FROM 4 PLACES CHANGE AUX BOX FROM DIM 13	HLL	3/17/20

MOTOR OUTLINE FOR THREE PHASE INDUCTION MOTOR		P.O. NO.	MOTOR TAG NO.
CUSTOMER NAME		TOSHIBA MODEL NO.	
OUTPUT	HP	VOLTAGE	FULL LOAD SPEED (min-1)
TYPE	4	FREQUENCY	Hz
POLE	4	RATING	FRAME
FORM	F	CONT.	6813US
TOSHIBA INTERNATIONAL CORPORATION HOUSTON, TEXAS U.S.A.			
3rd ANGLE PROJ.	PREPARED BY: J.PINON	DATE: 03/01/11	CHECKED BY: B.SIDLE
			DATE: 03/01/11
			DRAWING NO.: MDSL0087-62
			REV. 3

TYPICAL MOTOR PERFORMANCE DATA

Model: M407WTAL11E-C

HP	kW	Pole	FL RPM	Frame	Voltage	Hz	Phase	FL Amps
2000	1492	6	1190	6813US	4000	60	3	250
Enclosure	IP	Ins. Class	S.F.	Duty	NEMA Nom. Eff.	NEMA Design	kVA Code	Ambient (°C)
WP-II	24	F	1.15	CONT	95.4	-		40 C

Load	HP	kW	Amperes	Efficiency (%)	Power Factor (%)
Full Load	2000.00	1491.4	250	95.5	90.2
¾ Load	1500.00	1118.6	190	95.3	89.0
½ Load	1000.00	745.7	134	94.5	84.6
¼ Load	500.00	372.9	87	91.2	67.8
No Load			53.8		6.4
Locked Rotor			1600		25.7

Torque				Rotor wk ² Inertia (lb-ft ²)
Full Load (lb-ft)	Locked Rotor (% FLT)	Pull Up (% FLT)	Break Down (% FLT)	
8842	150	155	215	1419.40

Safe Stall Time(s)		Sound Pressure dB(A) @ 1M	Bearings*		Approx. Motor Weight (lbs)
Cold	Hot		DE	NDE	
25	10	-	6328C3 INS	6328C3 INS	14000

*Bearings are the only recommended spare part(s).

Motor Options:
Product Family:WP-II
Mounting:Footed,Shaft:US Shaft

Customer	
Customer PO	
Sales Order	
Project #	

Tag:

All characteristics are average expected values.

TOSHIBA INTERNATIONAL CORPORATION · HOUSTON, TEXAS U.S.A.

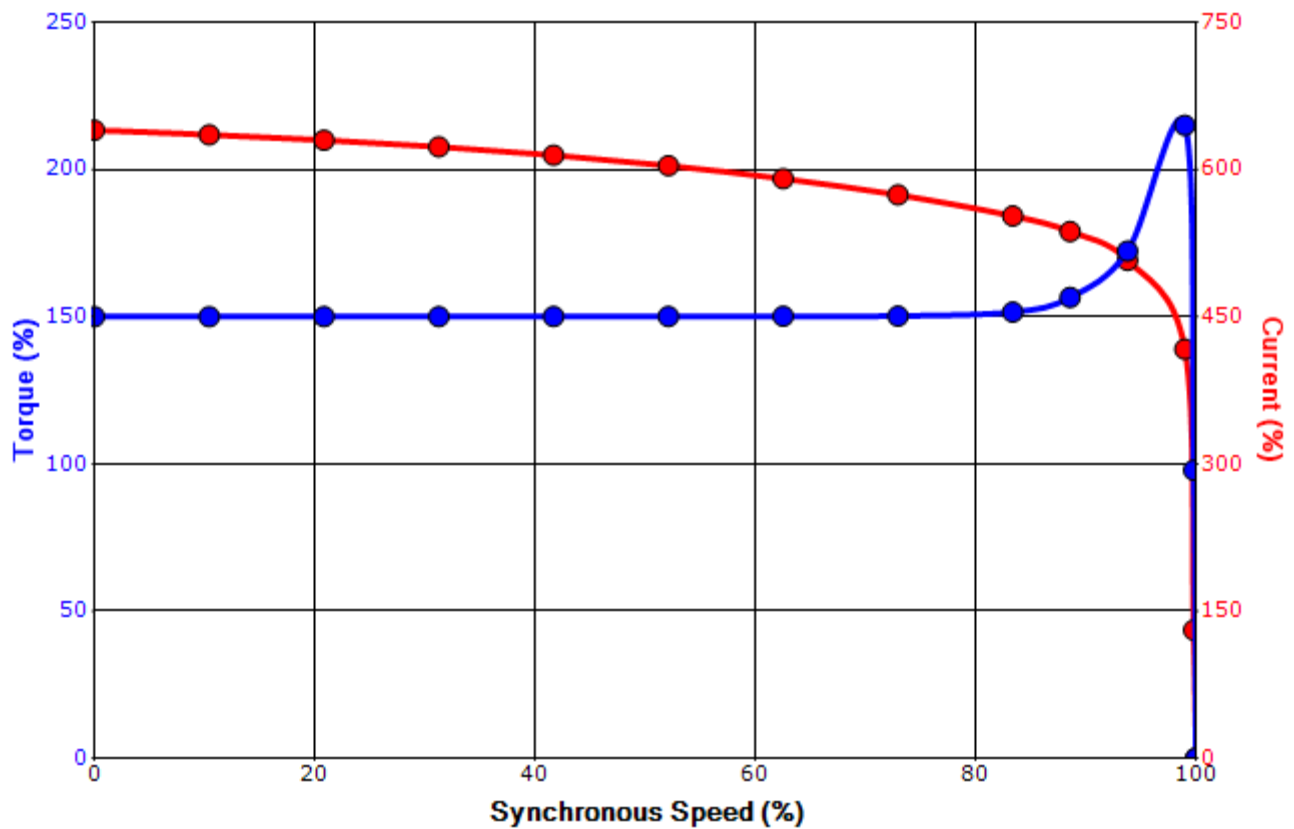
Engineering	bmammen	Doc. Written By	D. Suarez	Doc.# / Rev	MPCF-1119 / 0
Engr. Date	7/10/2014	Doc. Approved By	M. Campbell	Doc. Issued	6/8/2011

SPEED TORQUE/CURRENT CURVE

Model: M407WTAL11E-C

HP	kW	Pole	FL RPM	Frame	Voltage	Hz	Phase	FL Amps
2000	1492	6	1190	6813US	4000	60	3	250
Enclosure	IP	Ins. Class	S.F.	Duty	NEMA Nom. Eff.	NEMA Design	kVA Code	Ambient (°C)
WP-II	24	F	1.15	CONT	95.4	-		40 C
Locked Rotor Amps	Rotor wk ² Inertia (lb-ft ²)	Torque						Break Down (%)
		Full Load (lb-ft)	Locked Rotor (%)	Pull Up (%)				
1600	1419.40	8842	150	155			215	

Design Values



Customer		wk ² Load Inertia (lb-ft ²)	-
Customer PO		Load Type	-
Sales Order		Voltage (%)	100
Project #		Accel. Time	-

Tag:

All characteristics are average expected values.

TOSHIBA INTERNATIONAL CORPORATION · HOUSTON, TEXAS U.S.A.

Engineering	bmammen	Doc. Written By	D. Suarez	Doc.# / Rev	MPCF-1121 / 0
Engr. Date	7/10/2014	Doc. Approved By	M. Campbell	Doc. Issued	6/8/2011