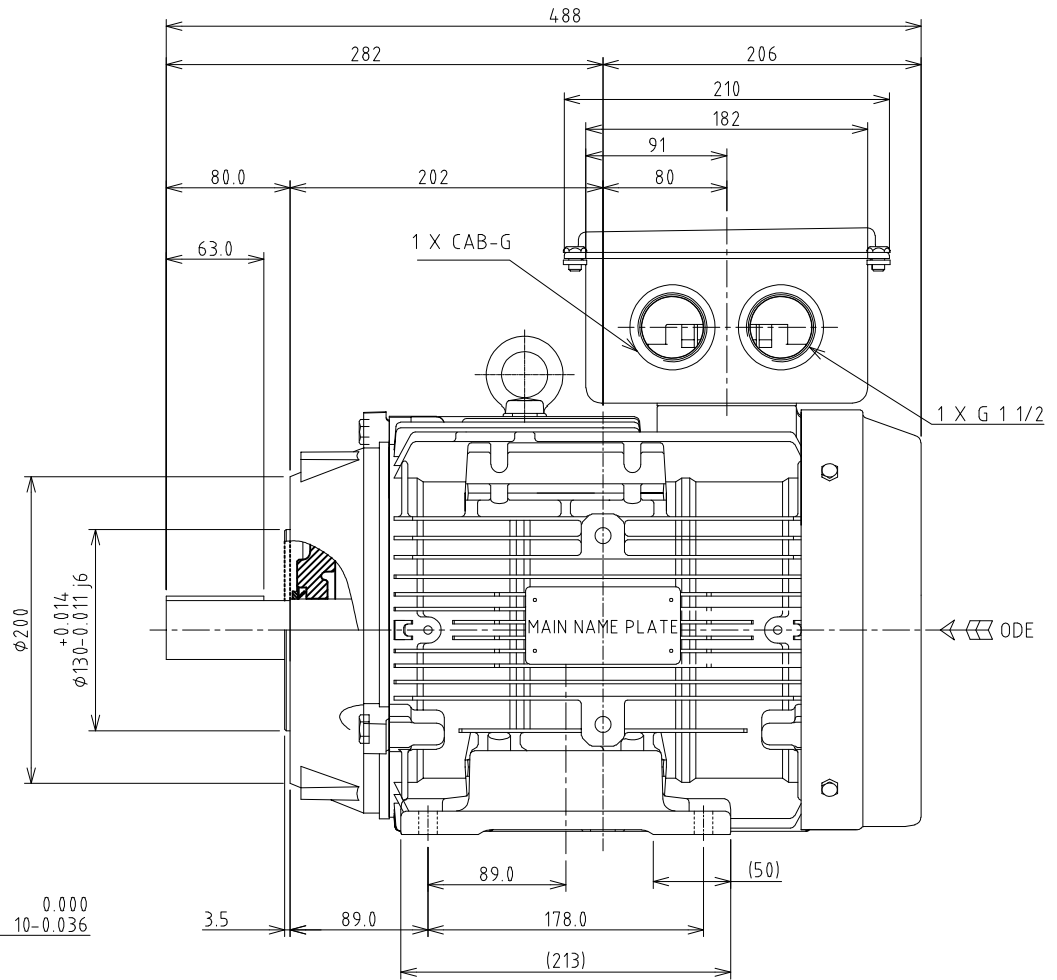
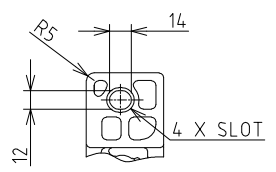


4XM10 DEPTH 20
EQS-BC Ø165

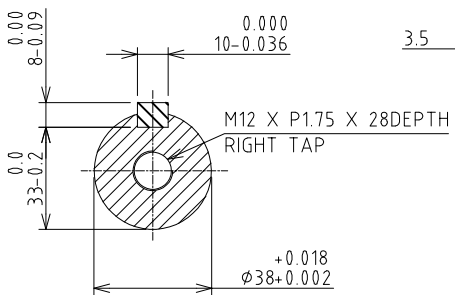


1 X CAB-G

1 X G 1 1/2

MAIN NAME PLATE

ODE



ROTATION: CCW
VIEW FROM: ODE

UNIT: mm

TOSHIBA RESERVES THE RIGHT TO MAKE CHANGES OF TECHNICAL IMPROVEMENT WITHOUT NOTICE. DO NOT USE FOR CONSTRUCTION, INSTALLATION, OR APPLICATION PURPOSES UNLESS THE DRAWING IS CERTIFIED.

| | |
|--|---------------------|
| B34-FLANGE MOTOR OL DRAWING IEC GLOBAL | TYPE: 2-4-6P - 400V |
| | FRAME: 132M |
| 3HFN000289 | |
| TOSHIBA TOSHIBA INTERNATIONAL CORPORATION | |

| TOLERANCES | |
|----------------------|------|
| X. | ±2.0 |
| X.X | ±0.5 |
| X.XX | ±0.1 |
| MAXIMUM MOTOR WEIGHT | |
| - lbs. | |
| - kgs. | |

EQP Global SD
XT SERIES

DRAWN BY: HIEN. NGUYEN
CHECK BY: B.X.QUYNH
APPROVED BY: JAY BUGBEE
www.toshiba.com/ind

| | | | | |
|----|--------------------------|----------|-----------|---------|
| 01 | Change to the length KEY | T.Danh | Sep-12-18 | B.Quynh |
| NO | REVISION | DRAWN BY | DATE | CHECK |

| | | |
|--|-------------|-----------|
| TOSHIBA INTERNATIONAL CORPORATION Industrial Division / Houston Motor Plant SQUIRREL CAGE INDUCTION MOTOR PERFORMANCE SPECIFICATIONS | INDEX | MPCF-1033 |
| | SHEET NO. | 1 of 1 |
| | ISSUED | 7/31/13 |
| | SUPERSEDES | 11/8/96 |
| | REVISION | 2 |
| | WRITTEN BY | MDC |
| | APPROVED BY | PAA |

CUSTOMER: -
TIC SR No.: -

| MOTOR NAMEPLATE DATA | | | |
|---------------------------|----------------|-----------------|----------------|
| H.P.: - | VOLTS: 230/400 | 3 PH / 50 Hz | S. RPM: 1500 |
| FRAME: 132M | ENCL: TEFC | FLAMPS: 26/14.8 | FLRPM: 1465 |
| FORM: FBKL1 | S.F.: - | IEC DESIGN NE | INSUL CLASS: F |
| TYPE: IKKH | AMB.: 40°C | CODE: - | DUTY: Cont. |
| MODEL No.: Y754SDMV7HS-PL | | kW: 7.5 | |
| NOM. EFF.: 90.4 | MIN. EFF.: - | cosØ 0.80 | |

| AMPERAGE | TORQUES | **BEARINGS: |
|-----------------------|------------------------|---------------------------------|
| LOCKED ROTOR: 211/122 | FULL LOAD (lb-ft.): 36 | DRIVE END: REFER TO NP |
| | LOCKED ROTOR (%): 395 | OPPOSITE DRIVE END: REFER TO NP |
| | BREAK DOWN (%): 395 | |

| EFFICIENCY | POWER FACTOR |
|-----------------|-----------------|
| FULL LOAD: 90.8 | FULL LOAD: 80.6 |
| 3/4 LOAD: 90.4 | 3/4 LOAD: 75.5 |
| 1/2 LOAD: 88.5 | 1/2 LOAD: 64.9 |

ALL CHARACTERISTICS ARE AVERAGE EXPECTED VALUES BASED UPON RATED VOLTAGE, FREQUENCY AND SINEWAVE POWER INPUT.
THE DECLARED LOCKED ROTOR CURRENT HAS A TOLERANCE OF 20%.
* TEMPERATURE RISE WILL BE CONSISTENT WITH INSULATION, AMBIENT AND SERVICE FACTOR AS DEFINED BY NEMA-MG-12 OR -20.
** BEARINGS ARE THE ONLY RECOMMENDED SPARE PART(S).

CERTIFIED BY: Zichao Xie
DATE: 10/18/2019

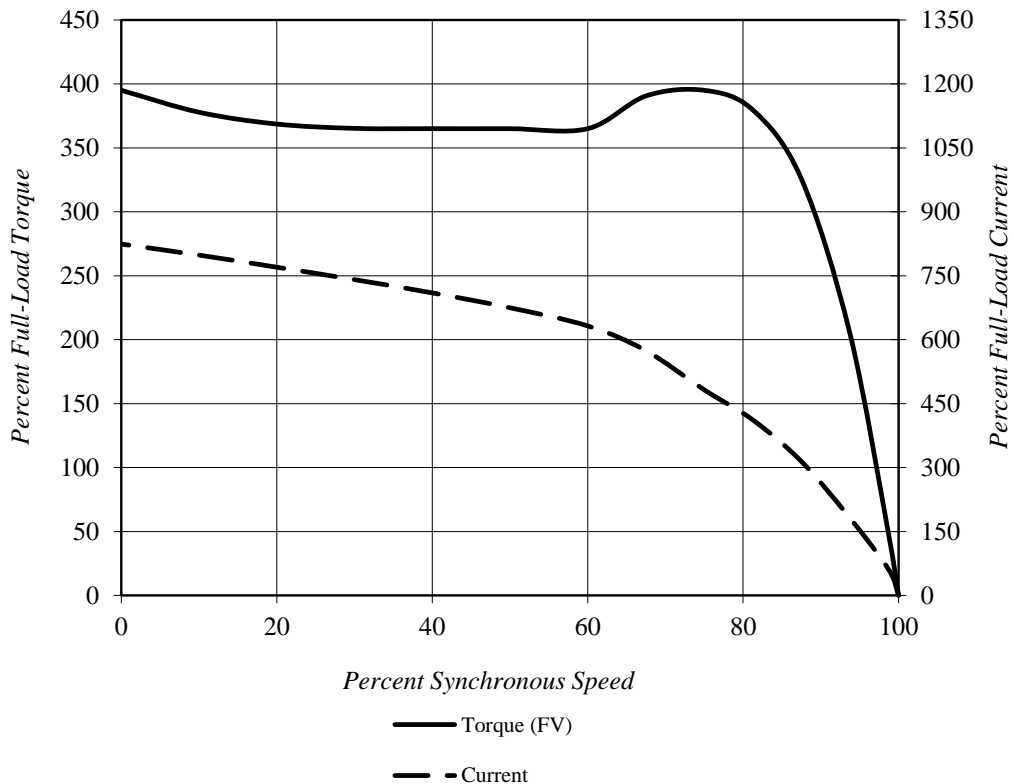
TOSHIBA INTERNATIONAL CORPORATION

Speed Torque/Current Curve

| | | | | | |
|-------------------|----------------|-----------------------|------------------------|--------------------|----------------|
| Model #: | Y754SDMV7HS-PL | | | FLAmps: | 26/14.8 |
| Enclosure: | TEFC | Voltage: | 230/400 V | Frame: | 132M |
| Pole: | 4 | Frequency: | 3 PH / 50 Hz | Ins. Class: | F |
| KW: | 7.5 | Rotor Inertia: | 1.4 lb-ft ² | Date: | 10/18/2019 |
| FLRPM: | 1465 | Load Inertia: | N/A | File: | GH4Y75 (7.5kW) |

| | | | |
|-----------------------------|-----------|---------------------|-----|
| Locked Rotor Amps: | 211/122 A | Load Type: | N/A |
| Locked Rotor Torque: | 395% | Starting at: | N/A |
| Breakdown Torque: | 395% | Accel. Time: | N/A |
| Rated Torque: | 36 lb-ft | | |

Design Values



Comments: PROJECT -

D.E.Curve #: GH4Y75 (7.5kW)

Prepared by: Zichao Xie

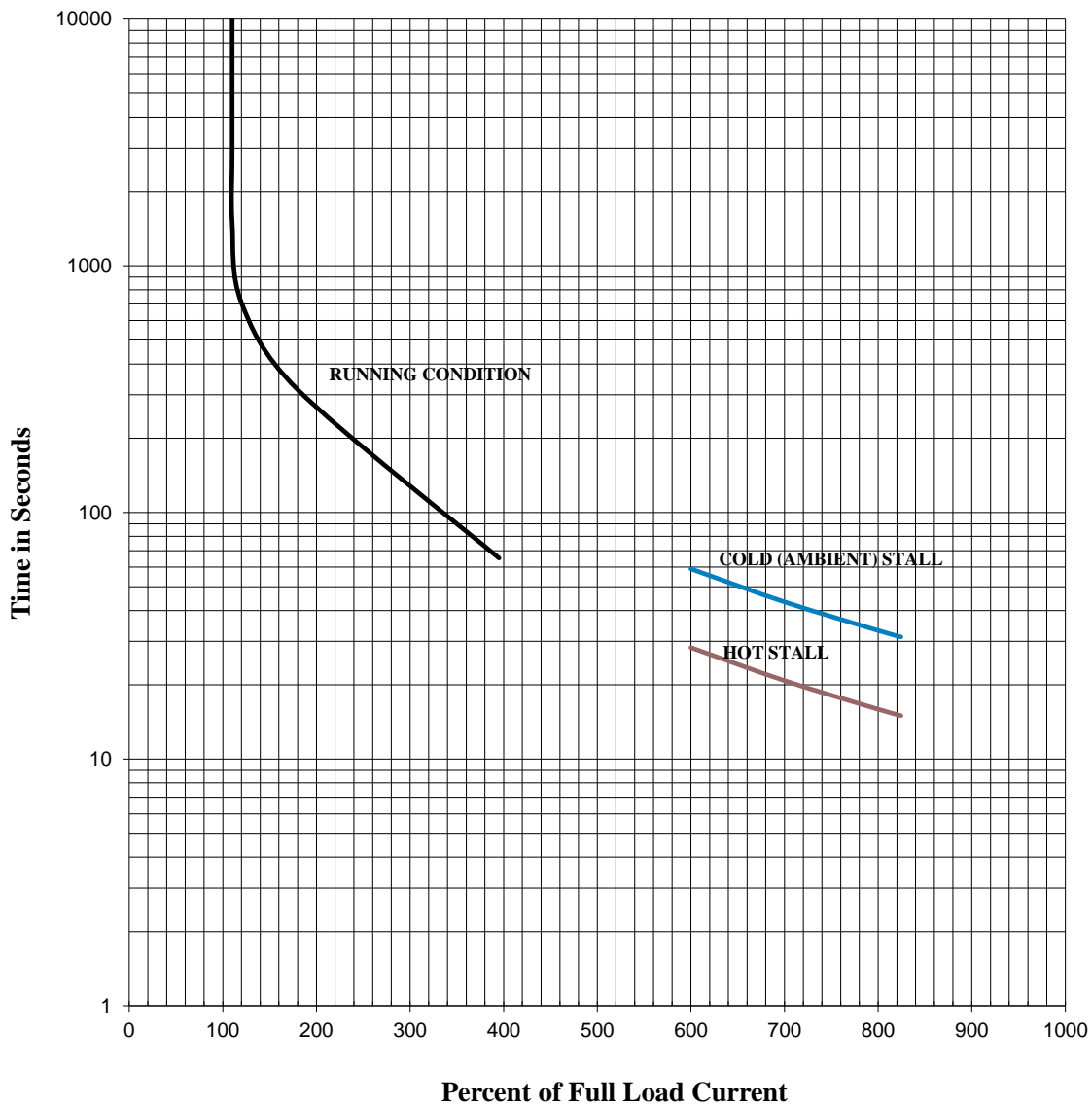
Checked by:

TOSHIBA INTERNATIONAL CORPORATION

Thermal Limit & Acceleration Curves

Design Values (For Reference Only)

| | | | | | |
|-------------------|----------------|-----------------------|------------------------|--------------------|----------------|
| Model #: | Y754SDMV7HS-PL | | | FLAmps: | 26/14.8 |
| Enclosure: | TEFC | Voltage: | 230/400 V | Frame: | 132M |
| Pole: | 4 | Frequency: | 3 PH / 50 Hz | Ins. Class: | F |
| KW: | 7.5 | Rotor Inertia: | 1.4 lb-ft ² | Date: | 10/18/2019 |
| FLRPM: | 1465 | Load Inertia: | N/A | File: | GH4Y75 (7.5kW) |



Comments: PROJECT _____

D.E. Curve #: GH4Y75 (7.5kW)

Prepared by: Zichao Xie

Checked by:

TOSHIBA INTERNATIONAL CORPORATION
Industrial Division / Houston Motor Plant

SQUIRREL CAGE INDUCTION MOTOR
PERFORMANCE SPECIFICATIONS

| | |
|-------------|-----------|
| INDEX | MPCF-1033 |
| SHEET NO. | 1 of 1 |
| ISSUED | 7/31/13 |
| SUPERSEDES | 11/8/96 |
| REVISION | 2 |
| WRITTEN BY | MDC |
| APPROVED BY | PAA |

CUSTOMER: -
TIC SR No.: -

MOTOR NAMEPLATE DATA

| | | | |
|---------------------------|----------------|-----------------|----------------|
| H.P.: - | VOLTS: 240/415 | 3 PH / 50 Hz | S. RPM: 1500 |
| FRAME: 132M | ENCL: TEFC | FLAMPS: 25/14.7 | FLRPM: 1465 |
| FORM: FBKL1 | S.F.: - | IEC DESIGN NE | INSUL CLASS: F |
| TYPE: IKKH | AMB.: 40°C | CODE: - | DUTY: Cont. |
| MODEL No.: Y754SDMV7HS-PL | | kW: 7.5 | |
| NOM. EFF.: 90.4 | MIN. EFF.: - | cosØ 0.78 | |

AMPERAGE

LOCKED ROTOR: 222/128

TORQUES

FULL LOAD (lb-ft.): 36
LOCKED ROTOR (%): 430
BREAK DOWN (%): 425

****BEARINGS:**

DRIVE END: REFER TO NP
OPPOSITE DRIVE END: REFER TO NP

EFFICIENCY

FULL LOAD: 91.1
3/4 LOAD: 90.5
1/2 LOAD: 88.2

POWER FACTOR

FULL LOAD: 78.2
3/4 LOAD: 72.0
1/2 LOAD: 60.3

ALL CHARACTERISTICS ARE AVERAGE EXPECTED VALUES BASED UPON RATED VOLTAGE,
FREQUENCY AND SINEWAVE POWER INPUT.

THE DECLARED LOCKED ROTOR CURRENT HAS A TOLERANCE OF 20%.

* TEMPERATURE RISE WILL BE CONSISTENT WITH INSULATION, AMBIENT AND SERVICE FACTOR AS
DEFINED BY NEMA-MG-12 OR -20.

** BEARINGS ARE THE ONLY RECOMMENDED SPARE PART(S).

CERTIFIED BY: Zichao Xie

DATE: 10/18/2019

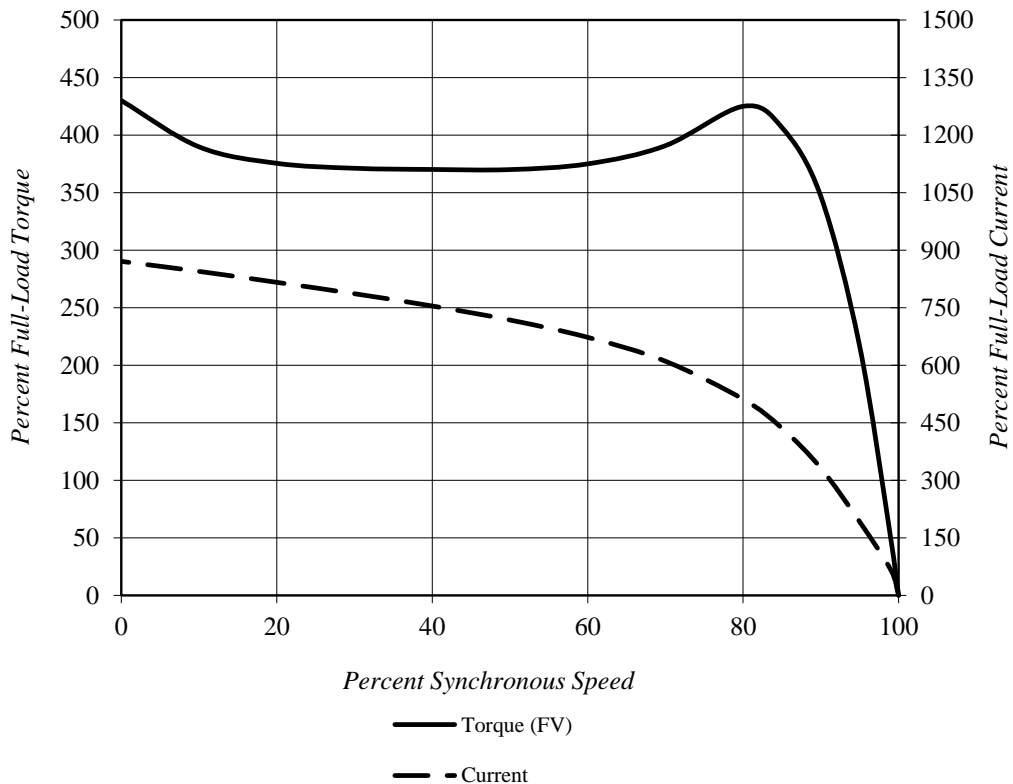
TOSHIBA INTERNATIONAL CORPORATION

Speed Torque/Current Curve

| | | | | | |
|-------------------|----------------|-----------------------|------------------------|--------------------|----------------|
| Model #: | Y754SDMV7HS-PL | | | FLAmps: | 25/14.7 |
| Enclosure: | TEFC | Voltage: | 240/415 V | Frame: | 132M |
| Pole: | 4 | Frequency: | 3 PH / 50 Hz | Ins. Class: | F |
| KW: | 7.5 | Rotor Inertia: | 1.4 lb-ft ² | Date: | 10/18/2019 |
| FLRPM: | 1465 | Load Inertia: | N/A | File: | GH4Y75 (7.5kW) |

| | | | |
|-----------------------------|-----------|---------------------|-----|
| Locked Rotor Amps: | 222/128 A | Load Type: | N/A |
| Locked Rotor Torque: | 430% | Starting at: | N/A |
| Breakdown Torque: | 425% | Accel. Time: | N/A |
| Rated Torque: | 36 lb-ft | | |

Design Values



Comments: PROJECT -

D.E. Curve #: GH4Y75 (7.5kW)

Prepared by: Zichao Xie

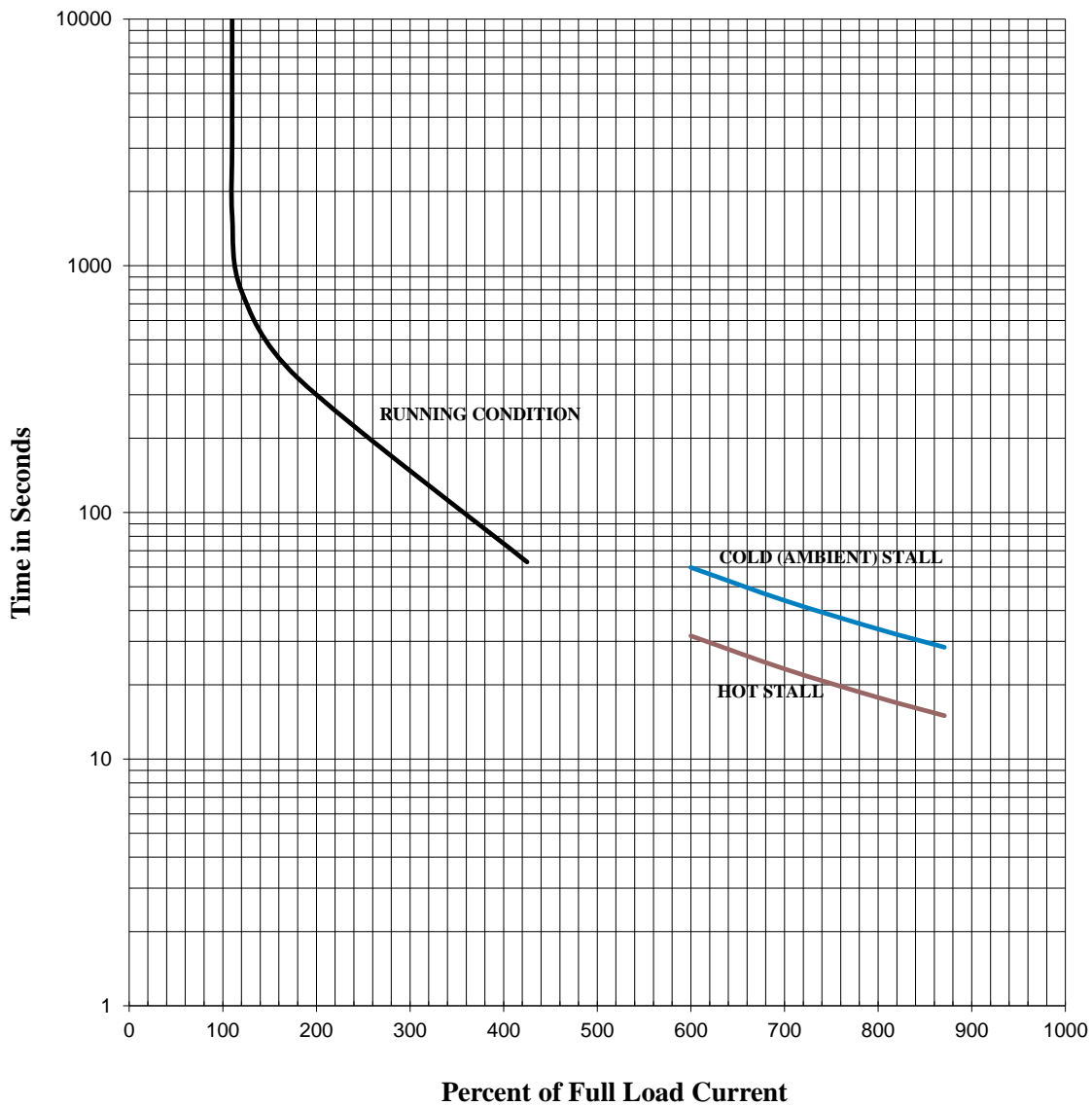
Checked by:

TOSHIBA INTERNATIONAL CORPORATION

Thermal Limit & Acceleration Curves

Design Values (For Reference Only)

| | | | | | |
|-------------------|----------------|-----------------------|------------------------|--------------------|----------------|
| Model #: | Y754SDMV7HS-PL | | | FLAmps: | 25/14.7 |
| Enclosure: | TEFC | Voltage: | 240/415 V | Frame: | 132M |
| Pole: | 4 | Frequency: | 3 PH / 50 Hz | Ins. Class: | F |
| KW: | 7.5 | Rotor Inertia: | 1.4 lb-ft ² | Date: | 10/18/2019 |
| FLRPM: | 1465 | Load Inertia: | N/A | File: | GH4Y75 (7.5kW) |



Comments: PROJECT -

D.E.Curve #: GH4Y75 (7.5kW)

Prepared by: Zichao Xie

Checked by:

| | | |
|--|-------------|-----------|
| TOSHIBA INTERNATIONAL CORPORATION Industrial Division / Houston Motor Plant SQUIRREL CAGE INDUCTION MOTOR PERFORMANCE SPECIFICATIONS | INDEX | MPCF-1033 |
| | SHEET NO. | 1 of 1 |
| | ISSUED | 7/31/13 |
| | SUPERSEDES | 11/8/96 |
| | REVISION | 2 |
| | WRITTEN BY | MDC |
| | APPROVED BY | PAA |

CUSTOMER: -
TIC SR No.: -

| MOTOR NAMEPLATE DATA | | | |
|---------------------------|----------------|-----------------|----------------|
| H.P.: - | VOLTS: 220/380 | 3 PH / 50 Hz | S. RPM: 1500 |
| FRAME: 132M | ENCL: TEFC | FLAMPS: 26/15.2 | FLRPM: 1460 |
| FORM: FBKL1 | S.F.: - | IEC DESIGN NE | INSUL CLASS: F |
| TYPE: IKKH | AMB.: 40°C | CODE: - | DUTY: Cont. |
| MODEL No.: Y754SDMV7HS-PL | | kW: 7.5 | |
| NOM. EFF.: 90.4 | MIN. EFF.: - | cosØ 0.83 | |

| AMPERAGE | TORQUES | **BEARINGS: |
|-----------------------|------------------------|---------------------------------|
| LOCKED ROTOR: 199/115 | FULL LOAD (lb-ft.): 36 | DRIVE END: REFER TO NP |
| | LOCKED ROTOR (%): 350 | OPPOSITE DRIVE END: REFER TO NP |
| | BREAK DOWN (%): 360 | |

| EFFICIENCY | POWER FACTOR |
|-----------------|-----------------|
| FULL LOAD: 90.4 | FULL LOAD: 83.0 |
| 3/4 LOAD: 90.3 | 3/4 LOAD: 79.1 |
| 1/2 LOAD: 88.8 | 1/2 LOAD: 70.2 |

ALL CHARACTERISTICS ARE AVERAGE EXPECTED VALUES BASED UPON RATED VOLTAGE, FREQUENCY AND SINEWAVE POWER INPUT.
THE DECLARED LOCKED ROTOR CURRENT HAS A TOLERANCE OF 20%.
* TEMPERATURE RISE WILL BE CONSISTENT WITH INSULATION, AMBIENT AND SERVICE FACTOR AS DEFINED BY NEMA-MG-12 OR -20.
** BEARINGS ARE THE ONLY RECOMMENDED SPARE PART(S).

CERTIFIED BY: Zichao Xie
DATE: 10/18/2019

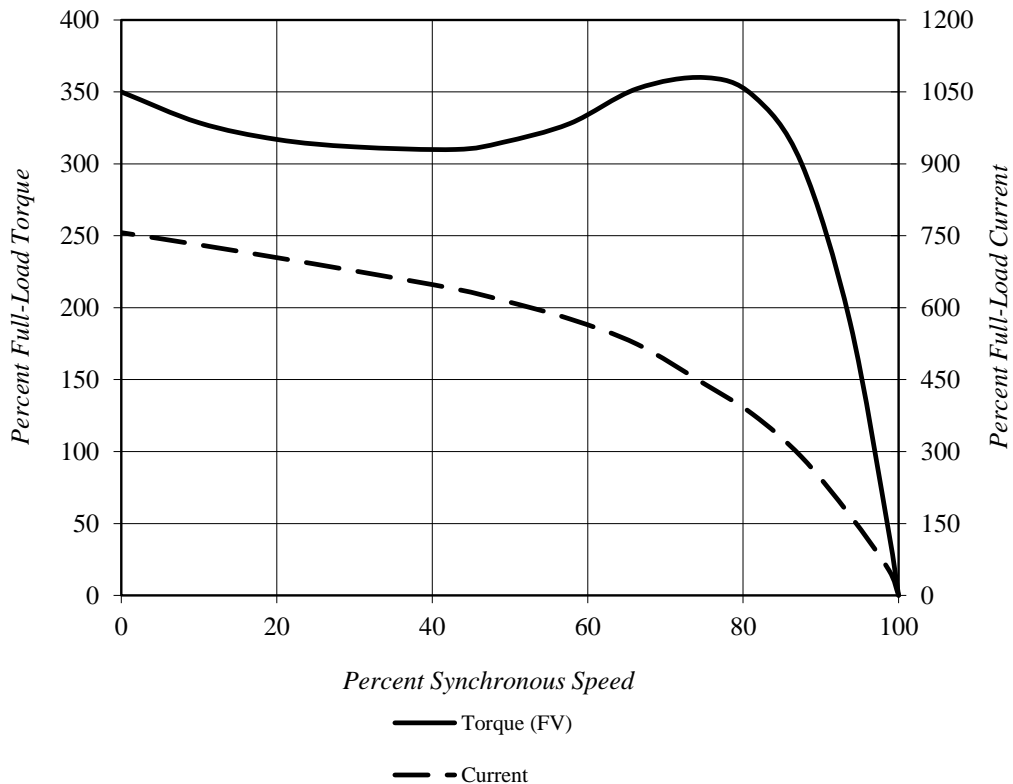
TOSHIBA INTERNATIONAL CORPORATION

Speed Torque/Current Curve

| | | | | | |
|-------------------|----------------|-----------------------|------------------------|--------------------|----------------|
| Model #: | Y754SDMV7HS-PL | | | FLAmps: | 26/15.2 |
| Enclosure: | TEFC | Voltage: | 220/380 V | Frame: | 132M |
| Pole: | 4 | Frequency: | 3 PH / 50 Hz | Ins. Class: | F |
| KW: | 7.5 | Rotor Inertia: | 1.4 lb-ft ² | Date: | 10/18/2019 |
| FLRPM: | 1460 | Load Inertia: | N/A | File: | GH4Y75 (7.5kW) |

| | | | |
|-----------------------------|-----------|---------------------|-----|
| Locked Rotor Amps: | 199/115 A | Load Type: | N/A |
| Locked Rotor Torque: | 350% | Starting at: | N/A |
| Breakdown Torque: | 360% | Accel. Time: | N/A |
| Rated Torque: | 36 lb-ft | | |

Design Values



Comments: PROJECT -

D.E.Curve #: GH4Y75 (7.5kW)

Prepared by: Zichao Xie

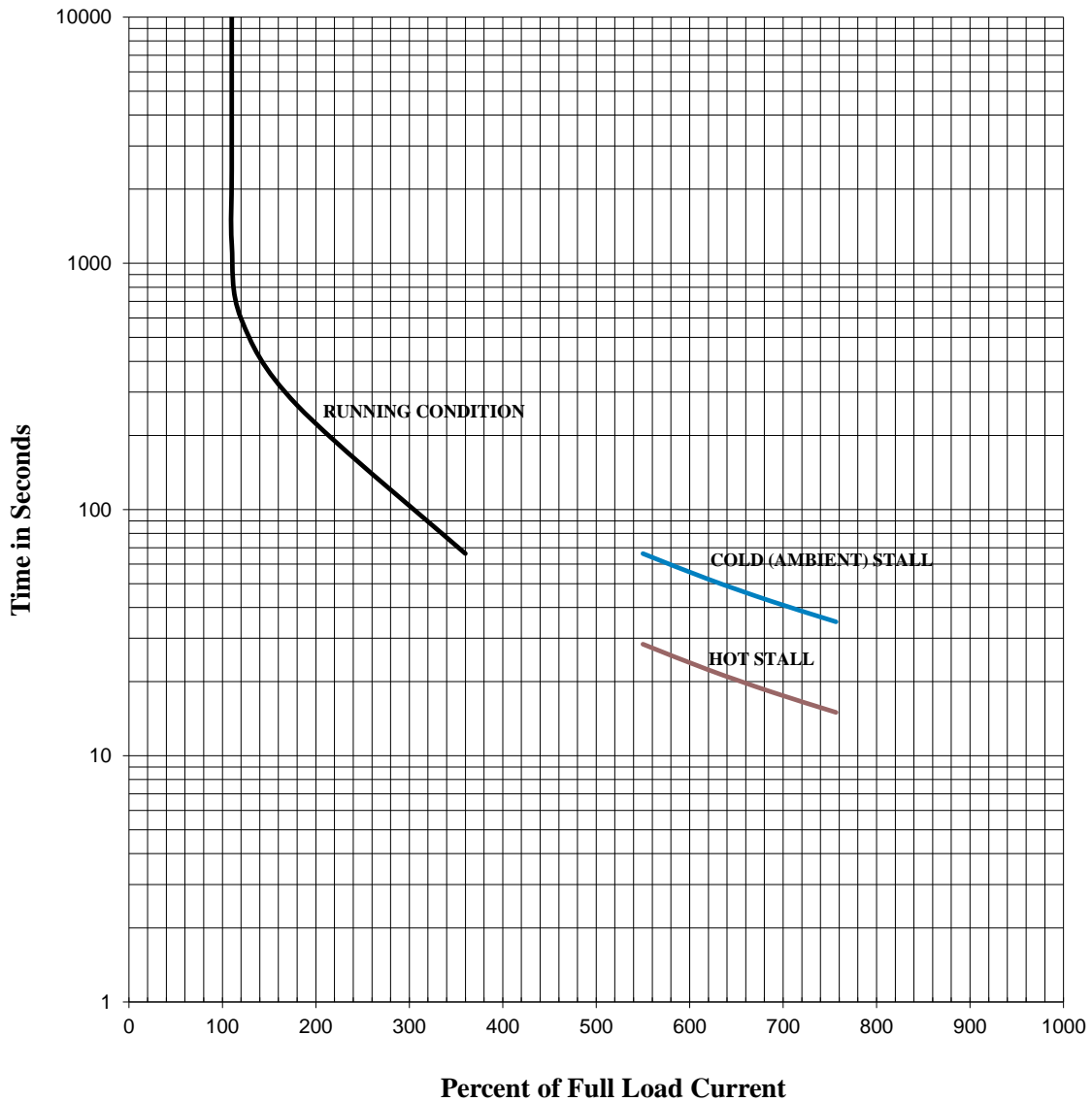
Checked by:

TOSHIBA INTERNATIONAL CORPORATION

Thermal Limit & Acceleration Curves

Design Values (For Reference Only)

| | | | | | |
|-------------------|----------------|-----------------------|------------------------|--------------------|----------------|
| Model #: | Y754SDMV7HS-PL | | | FLAmps: | 26/15.2 |
| Enclosure: | TEFC | Voltage: | 220/380 V | Frame: | 132M |
| Pole: | 4 | Frequency: | 3 PH / 50 Hz | Ins. Class: | F |
| KW: | 7.5 | Rotor Inertia: | 1.4 lb-ft ² | Date: | 10/18/2019 |
| FLRPM: | 1460 | Load Inertia: | N/A | File: | GH4Y75 (7.5kW) |



Comments: PROJECT _____

D.E.Curve #: GH4Y75 (7.5kW)

Prepared by: Zichao Xie

Checked by: _____

TOSHIBA INTERNATIONAL CORPORATION
Industrial Division / Houston Motor Plant

SQUIRREL CAGE INDUCTION MOTOR
PERFORMANCE SPECIFICATIONS

| | |
|-------------|-----------|
| INDEX | MPCF-1033 |
| SHEET NO. | 1 of 1 |
| ISSUED | 7/31/13 |
| SUPERSEDES | 11/8/96 |
| REVISION | 2 |
| WRITTEN BY | MDC |
| APPROVED BY | PAA |

CUSTOMER: -
TIC SR No.: -

MOTOR NAMEPLATE DATA

| | | | |
|---------------------------|--------------|----------------|----------------|
| H.P.: 10 | VOLTS: 460 | 3 PH / 60 Hz | S. RPM: 1800 |
| FRAME: 132M | ENCL: TEFC | FLAMPS: 13.1 | FLRPM: 1770 |
| FORM: FBKL1 | S.F.: 1.15 | NEMA DESIGN: A | INSUL CLASS: F |
| TYPE: IKKH | AMB.: 40°C | CODE: L | DUTY: Cont. |
| MODEL No.: Y754SDMV7HS-PL | | kW: 7.5 | |
| NOM. EFF.: 91.7 | MIN. EFF.: - | P.F.: 78.5 | |

AMPERAGE

LOCKED ROTOR: 125

TORQUES

FULL LOAD (lb-ft.): 30
LOCKED ROTOR (%): 405
BREAK DOWN (%): 410

****BEARINGS:**

DRIVE END: REFER TO NP
OPPOSITE DRIVE END: REFER TO NP

EFFICIENCY

FULL LOAD: 91.3
3/4 LOAD: 90.4
1/2 LOAD: 87.9

POWER FACTOR

FULL LOAD: 78.8
3/4 LOAD: 73.5
1/2 LOAD: 62.8

ALL CHARACTERISTICS ARE AVERAGE EXPECTED VALUES BASED UPON RATED VOLTAGE,
FREQUENCY AND SINEWAVE POWER INPUT.

THE DECLARED LOCKED ROTOR CURRENT HAS A TOLERANCE OF 20%.

* TEMPERATURE RISE WILL BE CONSISTENT WITH INSULATION, AMBIENT AND SERVICE FACTOR AS
DEFINED BY NEMA-MG-12 OR -20.

** BEARINGS ARE THE ONLY RECOMMENDED SPARE PART(S).

CERTIFIED BY: Zichao Xie

DATE: 10/18/2019

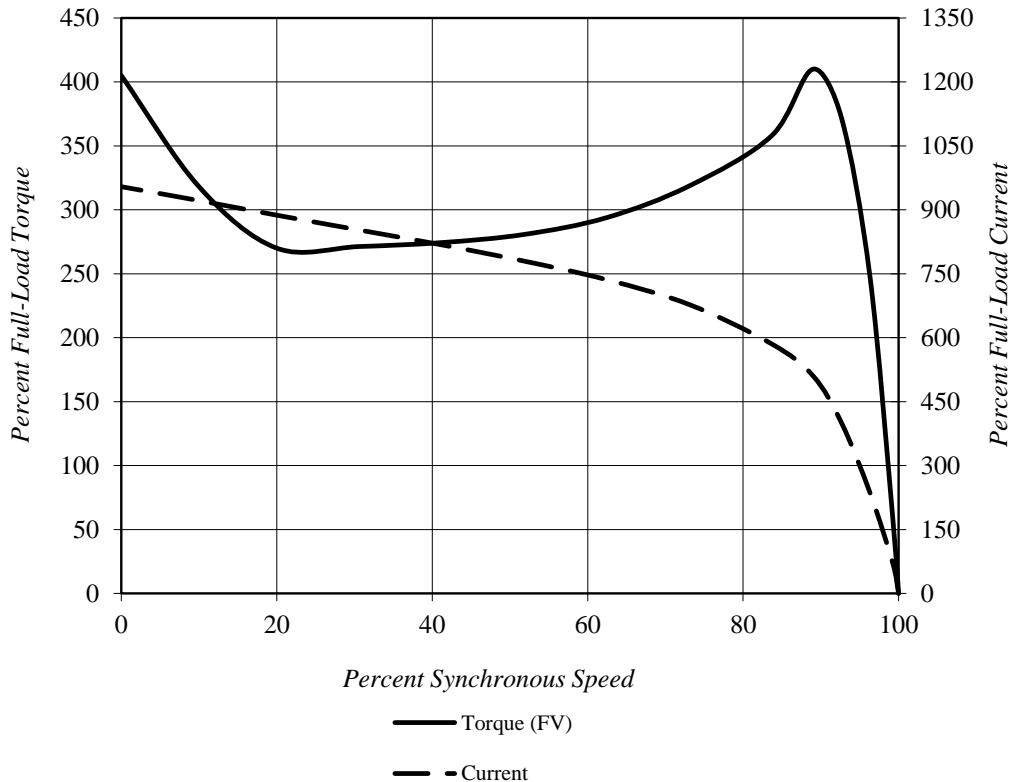
TOSHIBA INTERNATIONAL CORPORATION

Speed Torque/Current Curve

| | | | | | |
|-------------------|----------------|-----------------------|------------------------|--------------------|----------------|
| Model #: | Y754SDMV7HS-PL | | | FLAmps: | 13.1 |
| Enclosure: | TEFC | Voltage: | 460 V | Frame: | 132M |
| Pole: | 4 | Frequency: | 3 PH / 60 Hz | Ins. Class: | F |
| HP: | 10 | Rotor Inertia: | 1.4 lb-ft ² | Date: | 10/18/2019 |
| FLRPM: | 1770 | Load Inertia: | N/A | File: | GH4Y75 (7.5kW) |

| | | | |
|-----------------------------|----------|---------------------|-----|
| Locked Rotor Amps: | 125 A | Load Type: | N/A |
| Locked Rotor Torque: | 405% | Starting at: | N/A |
| Breakdown Torque: | 410% | Accel. Time: | N/A |
| Rated Torque: | 30 lb-ft | | |

Design Values



Comments: PROJECT -

D.E. Curve #: GH4Y75 (7.5kW)

Prepared by: Zichao Xie

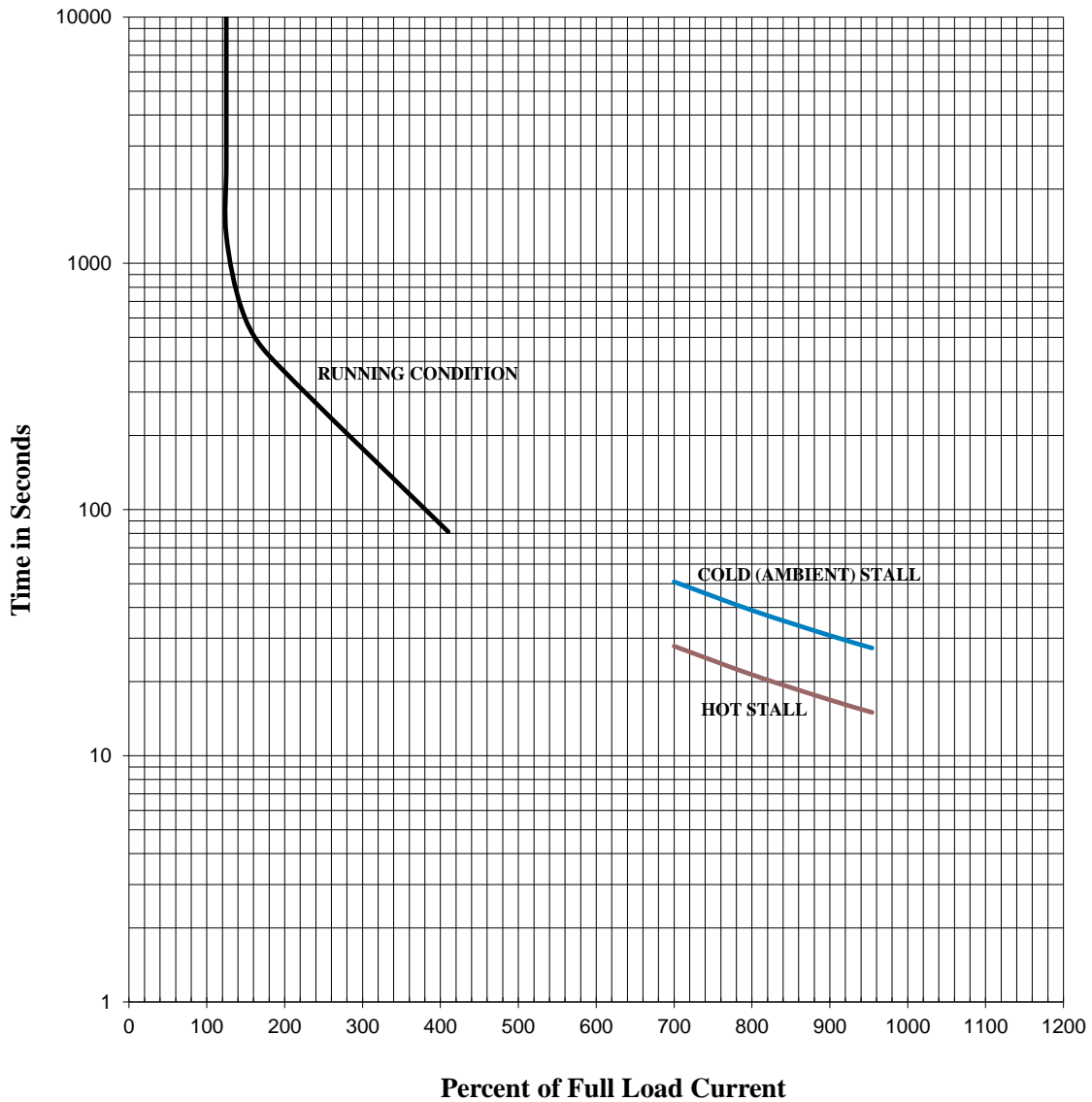
Checked by:

TOSHIBA INTERNATIONAL CORPORATION

Thermal Limit & Acceleration Curves

Design Values (For Reference Only)

| | | | | | |
|-------------------|----------------|-----------------------|------------------------|--------------------|----------------|
| Model #: | Y754SDMV7HS-PL | | | FLAmps: | 13.1 |
| Enclosure: | TEFC | Voltage: | 460 V | Frame: | 132M |
| Pole: | 4 | Frequency: | 3 PH / 60 Hz | Ins. Class: | F |
| HP: | 10 | Rotor Inertia: | 1.4 lb-ft ² | Date: | 10/18/2019 |
| FLRPM: | 1770 | Load Inertia: | N/A | File: | GH4Y75 (7.5kW) |



Comments: PROJECT -

D.E.Curve #: GH4Y75 (7.5kW)

Prepared by: Zichao Xie

Checked by: