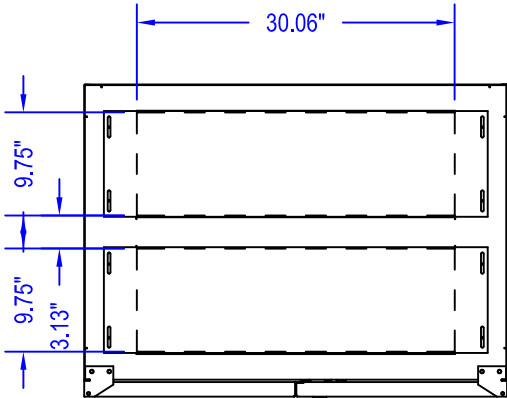


Part No.	UPS KVA	UPS Output Amp Rating	Breaker Type	Breaker Amp CB1/CB2/CB3	Voltage	kAIC Rating at 240V/480V/600V
MBSF-75K-S3	750kVA	1200A	ABB-S7	1200A/1200A/1200A	480Vac	65kAIC@480Vac

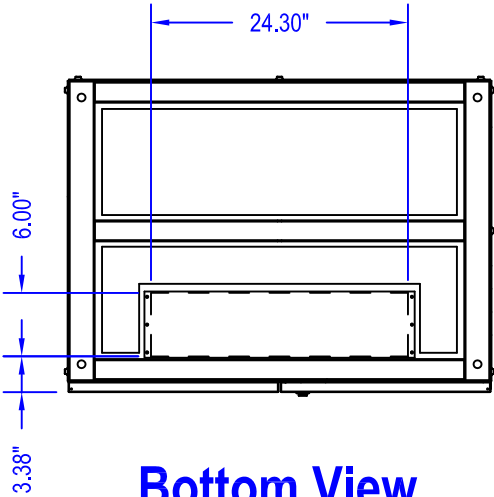
Enclosure - NEMA 1, Free Standing Eclosure.  
Box/ Trim - 12 Gauge Structured/16-Gauge Covers steel finished with heat fused Beige polyester powder, electrostatically applied on a phosphatized base.  
Breakers - ABB thermal-magnetic type, 1200AT, 1200AF, 80% Rated, 3-poles, supplied with (4) 500 kcmil terminal lug per phase. (8) 500kcmil Neutral Lug. Ground Buss/Stud Inside Enclosure.  
Cable Entry - Cable entry may be located in top, bottom or sides (Top/Bottom Knockout Panels Provided).  
Weight - Approximately 850 lbs.

OPTIONS

<b>Toshiba Part#: MBSF-75K-S3-KK</b> KK: Mechanical Interlock between CB2 & CB3 Parts: KK1-KK2
<b>Toshiba Part#: MBSF-75K-S3-KS</b> KS: 120Vac Electro-Mechanical Interlock between Module & UPS Parts: KK1-KK2-SK1-PL1



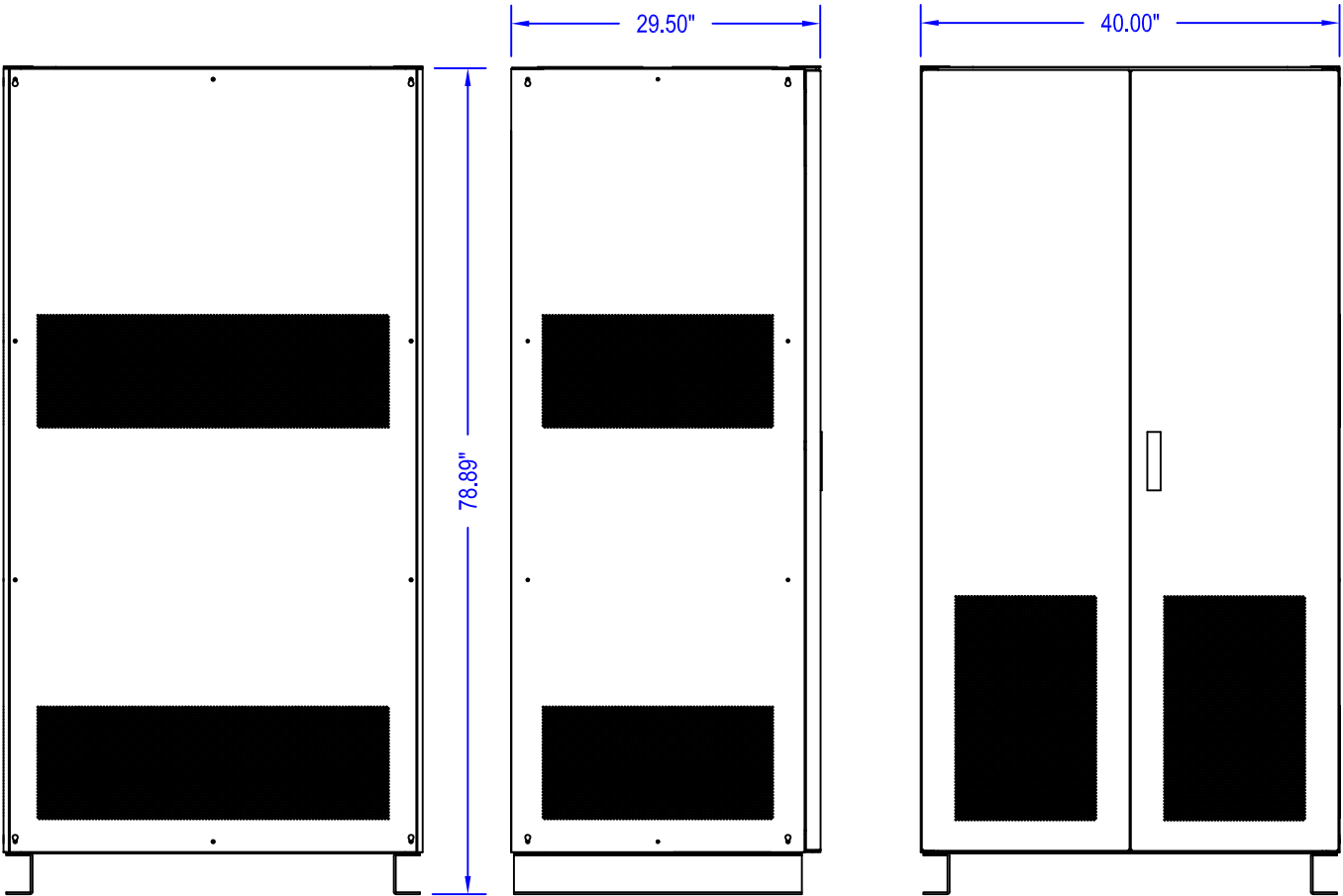
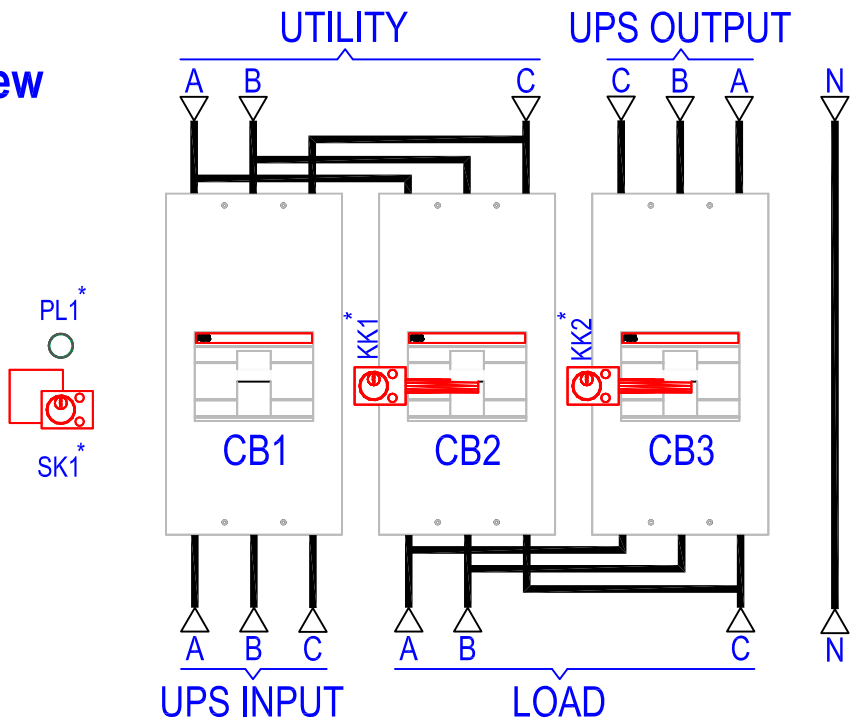
Top View



Bottom View

NOTE
* Please refer to OPTION table for all details.

Termination View



Back View

Side View

Front View

INT	01	A.H	DRAWN BY: A.H	DATE Jan 29, 2009	THIS MATERIAL IS THE EXCLUSIVE PROPERTY OF TOSHIBA INTERNATIONAL CORPORATION AND SHALL NOT BE REPRODUCED, USED OR DISCLOSED TO OTHERS UNLESS PRIOR WRITTEN AUTHORIZATION IS OBTAINED.	TITLE: 750kVA, 1200A, 480V, 3BRK Free Standing Bypass	SCALE n/a	ORDER NO.
			CHECKED BY	DATE			DRAWING NO. 750kVA-3BRK480V01200A MBSF01	
			APPROVED BY	DATE				