

Models: G8000MM Series UPS

**CAUTIONS
&
INSTALLATION INSTRUCTIONS**

Cautions:

Any maintenance, additions, and/or changes that are to be done to this UPS should be performed by a certified Toshiba trained repair technician authorized to service Toshiba’s G8000MM Series UPS.

The followings are a list of minimum safety requirements that should be adhered to, and is not to be interpreted to be the only safety requirements to follow. Please follow all Local, State, and Federal Safety Requirements.

- 1) Verify that the UPS is off and that the power cord or main power is disconnected from the power source. (Observe Lock-out/Tag-out procedures if applicable)
- 2) Remove watches, rings, and/or other metal objects.
- 3) Use insulated tools to prevent inadvertent shorts.
- 4) Wear safety glasses, rubber gloves and boots.
- 5) Do not lay tools or metal parts on top of the batteries.
- 6) All connections must be made in accordance with National and Local Electric Codes.

In no event will Toshiba Corporation be responsible or liable for either indirect or consequential damage or injury that may result from the modification of this unit.

RELATED DATA FILE NO.

				COPY	DRAWN BY:	DATE:
				TO:	H. Huynh	9/2009
				TO:	CHECKED BY:	
				TO:	R. Stringer	9/2009
				TO:	APPROVED BY:	DATE:
NO. 001	REVISION	DATE	BY	TO:	Y. Morishima	9/2009

**TOSHIBA/HOUSTON INVERTER PLANT
DESIGN DATA D-UM0035 Page 2 of 8
SUBJECT: G8000MM Series UPS – Updating the Compact Flash**

Compact Flash Installation Instructions:

- 1.) Before installing the Compact Flash (CF) card on the Tie Cabinet Display, verify the Tie Cabinet is turned off.
- 2.) On the back of the display, open the panel and set Dipswitch1 to “ON.”

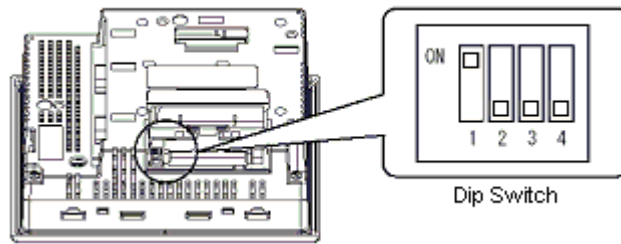


Figure1. Set the DipSwitch1 to “ON.” This will allow the program to run from the CF card.

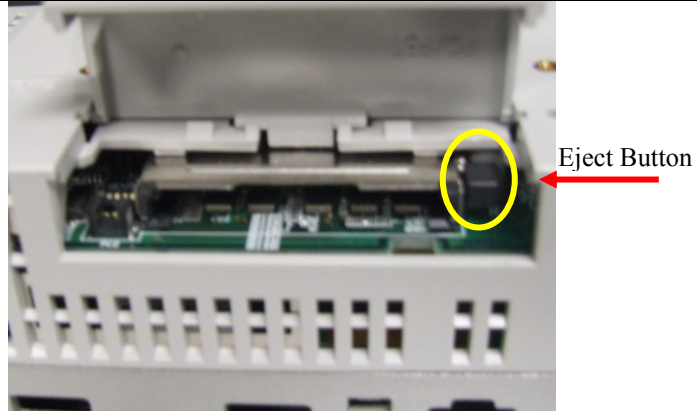
- 3.) Gently insert the CF card onto the back of the display

Removal Instructions:

- 1.) A compact flash card reader is required in order to change the software on the Tie Cabinet display.
- 2.) Verify that the Tie Cabinet is turned off.
- 3.) On the back of the display, open the panel and locate the CF card
- 4.) Press the eject button located next to CF card slot
- 5.) Gently remove the CF card from the slot

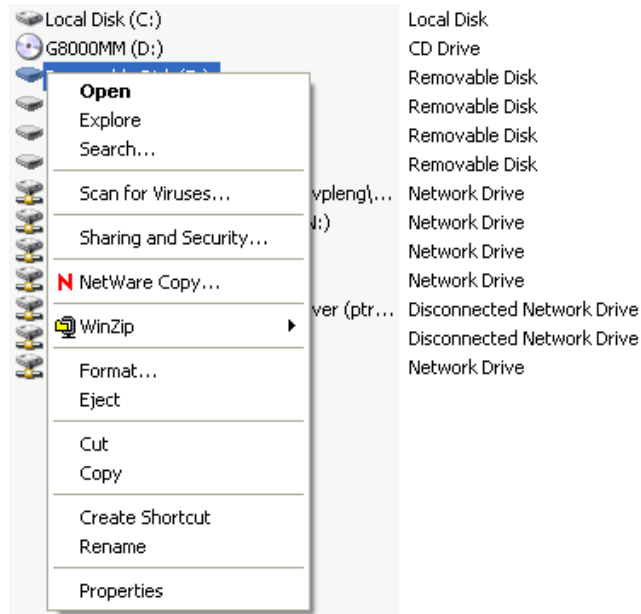
NO.	REVISION	DATE	BY

**TOSHIBA/HOUSTON INVERTER PLANT
DESIGN DATA D-UM0035 Page 3 of 8
SUBJECT: G8000MM Series UPS – Updating the Compact Flash**



Download Instructions:

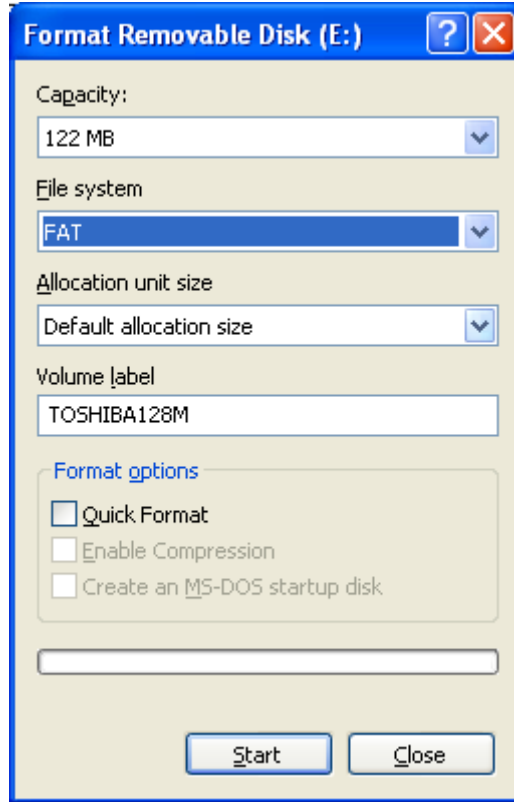
- 1.) Download MMS software from the web if the software was not provided.
Toshiba website: www.toshiba.com/upsServ
- 2.) Insert the CF card into the card reader.
- 3.) Double-click on “My Computer” and locate the “Removable Disk” for the compact flash drive.
- 4.) Right-Click on the “Removable Disk” drive and select “Format...”



NO.	REVISION	DATE	BY

**TOSHIBA/HOUSTON INVERTER PLANT
DESIGN DATA D-UM0035 Page 4 of 8
SUBJECT: G8000MM Series UPS – Updating the Compact Flash**

5.) On “File System,” choose “FAT” and click “Start.” This will erase the compact flash.



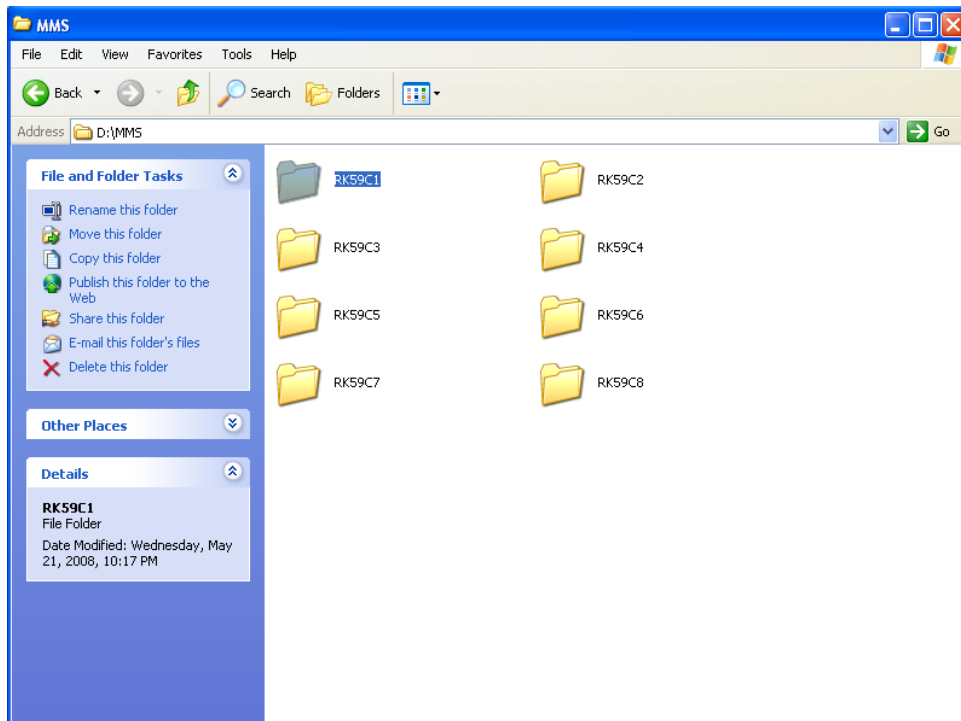
6.) Open the MMS folder that was downloaded in step 1. You will see additional folders that are designated RK59Cn, where n is a number 1 thru 8.

Select the software that corresponds to the number of on line UPS' in the system.

Example: A system has 6 UPS's operating in parallel; download RK59C1-RK59C6.

NO.	REVISION	DATE	BY

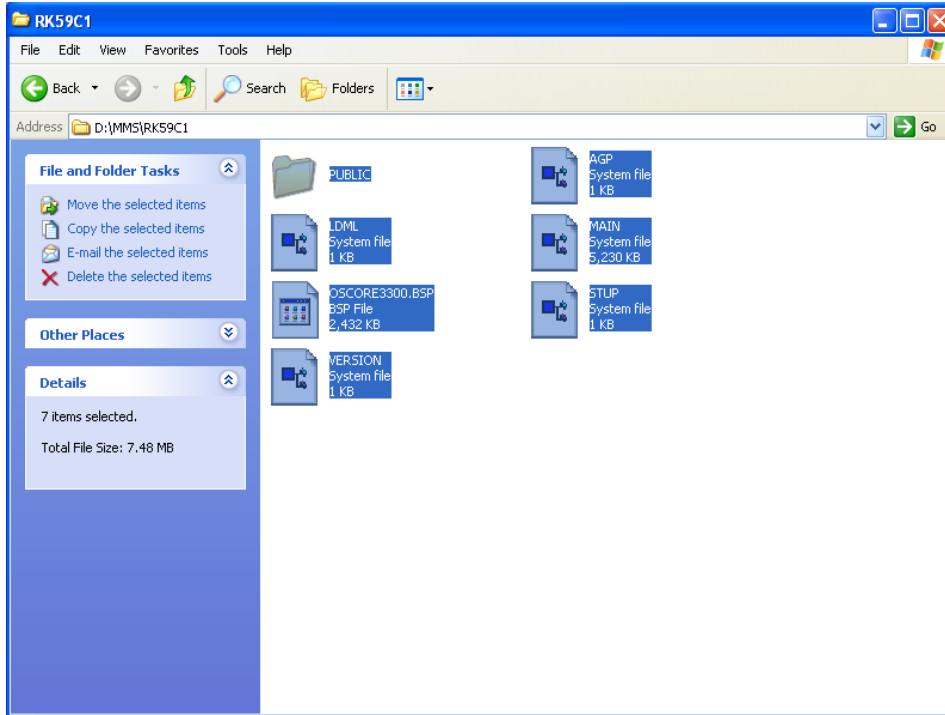
**TOSHIBA/HOUSTON INVERTER PLANT
DESIGN DATA D-UM0035 Page 5 of 8
SUBJECT: G8000MM Series UPS – Updating the Compact Flash**



6.) Open the desired folder and copy the contents inside the folder onto the compact flash.

NO.	REVISION	DATE	BY

TOSHIBA/HOUSTON INVERTER PLANT DESIGN DATA D-UM0035 Page 6 of 8 SUBJECT: G8000MM Series UPS – Updating the Compact Flash



7.) Once the transfer is complete, remove the CF card from the card reader and reinsert it into the display.

8.) Power up the unit.

Changing Display Settings Instructions:

Any updates to the display will cause the settings on the display to reset to default. Users can change these settings by doing the following:

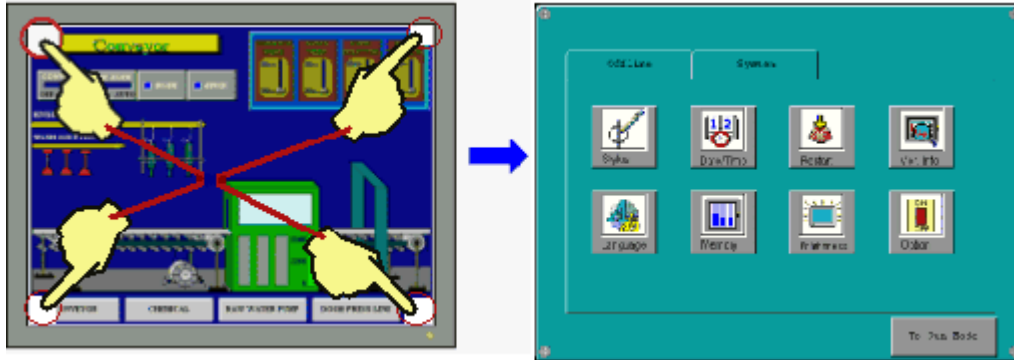
1.) During start-up of the display, users can access the settings menu by touching the corners of the display. However, the sequence varies depending on the display model.

For AGP target machines:

- Select either 2 left or right corners to display the configuration menu using the 2-corner touch method. Press two corners on the screen within one second of each other and in sequence-either the top-left then the bottom-left corners, or the top-right then the bottom-right corners.

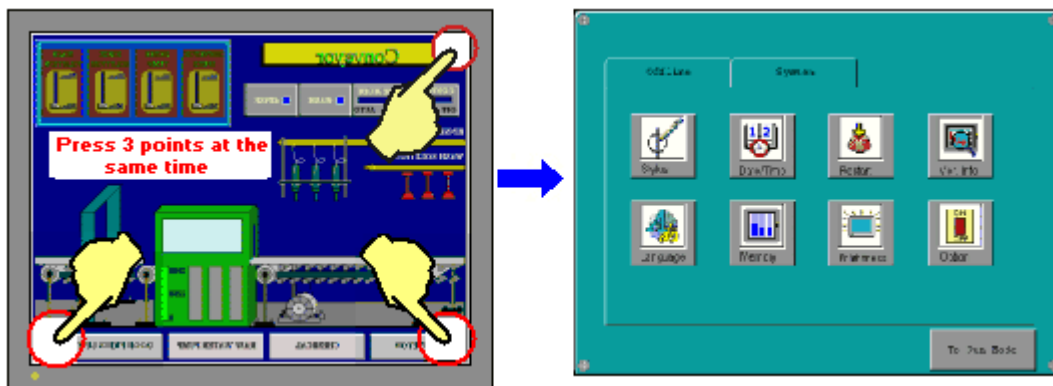
NO.	REVISION	DATE	BY

**TOSHIBA/HOUSTON INVERTER PLANT
DESIGN DATA D-UM0035 Page 7 of 8
SUBJECT: G8000MM Series UPS – Updating the Compact Flash**



For GP target machines:

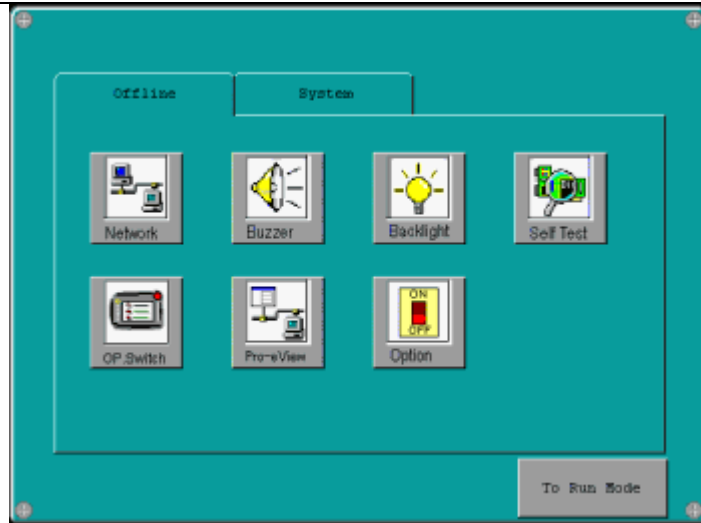
- Select either 3 Corner or Top Left /3 Corners to display the configuration menu using the 3-corner touch method. Press three corners on the screen at the same time to enter the configuration menu. Simultaneously press the top-right, bottom-left, and bottom-right. The system configuration menu can be displayed while runtime is running.



2.) In the configuration menu, users can change the settings of the display. **Note: Please do not change the settings of the network as this will be handled by the compact flash.**

NO.	REVISION	DATE	BY

**TOSHIBA/HOUSTON INVERTER PLANT
DESIGN DATA D-UM0035 Page 8 of 8
SUBJECT: G8000MM Series UPS – Updating the Compact Flash**



3.) Once the changes are complete, press “To Run Mode” to exit the configuration menu.

NO.	REVISION	DATE	BY